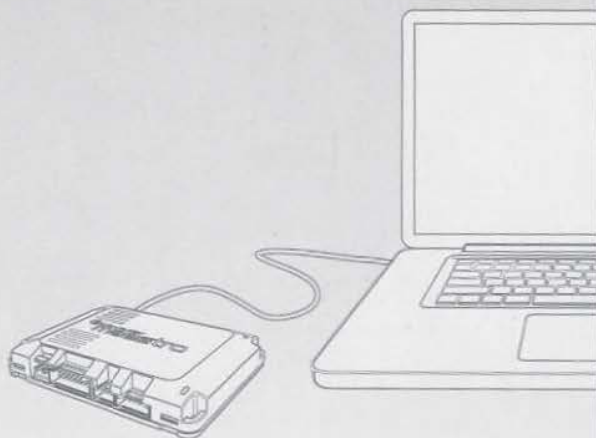




SW | AR | AR | SW HD

QUICK START GUIDE



FOLLOW THE WEB PROGRAMMING
STEPS INSIDE PRIOR TO INSTALLATION.



WEB PROGRAMMING

1- INSTALL THE WEBLINK DESKTOP APPLICATION

Go to www.idatalinkmaestro.com/plugin, select your software version (Mac or PC) and follow the installation steps. Be sure to review the system requirements before installing.

2- REGISTER A WEBLINK ACCOUNT

Once installed, complete the Weblink registration process and log into Weblink.

3- CONNECT THE MODULE TO YOUR COMPUTER

Use the included USB cable to connect your iDatalink Maestro module to your computer.

4- WEBLINK PROGRAMMING

Follow the programming steps until your module is flashed, then download your install guide and owner's manual if applicable.

5- COMPLETE VEHICLE-SPECIFIC INSTALLATION

Follow the steps in your install guide and complete the installation. ADS recommends having your iDatalink Maestro device installed by a certified technician. **Additional accessories may be required and sold separately.**



TECHNICAL SUPPORT

877.212.6169

idatalinkmaestro.com

LIMITED 1-YEAR WARRANTY

Automotive Data Solutions Inc. ("ADS") warrants to the original purchaser of the product that the following components product shall be free of defects in material and workmanship under normal use and circumstances for the period of one (1) year from the date of original installation.

"Authorized Dealer" is defined by ADS as a company who qualifies to purchase products directly from ADS, or one of its approved distributors. Thus, products not sold nor installed by an Authorized Dealer are not covered by this warranty. This includes, but is not limited to, ADS products sold on Amazon.com, eBay.com, Walmart.com and Newegg.com. To find an authorized retailer near you, visit <http://maestro.idatalink.com/find-product>.

In the event of any product malfunction during the Warranty period, the original purchaser must return to the Authorized Dealer where it was originally purchased with the original proof of purchase. If a malfunction is detected, the Authorized Dealer will elect to repair or replace the product at its discretion. Labor costs may be applicable and are at the discretion of the Authorized Dealer.

ADS is not responsible for any damages whatsoever, including but not limited to any consequential damages, incidental damages, damages for loss of time, loss of earnings, commercial loss, loss of economic opportunity and the like that may or may not have resulted from the installation or operation of an iDatalink Maestro product.



TECHNICAL SUPPORT

877.212.6169

idatalinkmaestro.com

CHEVROLET AND GMC VEHICLES
WITH 8" SCREEN
(SEE DETAILS INSIDE)

INSTALL GUIDE

GM6-RR2-DS-(APX-S8-GM2)-EN

RETAINS STEERING WHEEL CONTROLS AND MORE!

(DOES NOT RETAIN FACTORY AMPLIFIER)



**HEAD UNIT
ADAPTER READY**

PRODUCTS REQUIRED

iDatalink Maestro RR2 Radio Replacement Interface
iDatalink Maestro APX-S8-GM2 Dash Kit
APX compatibles radios and screen extension harness

PROGRAMMED FIRMWARE: GM6-RR2-DS

WELCOME

Congratulations on the purchase of your iDatalink Maestro RR2 Radio replacement solution. You are now a few simple steps away from enjoying your new car radio with enhanced features.

Before starting your installation, please ensure that your iDatalink Maestro module is programmed with the correct firmware for your vehicle and that you carefully review the install guide.

Please note that Maestro RR2 will only retain functionalities that were originally available in the vehicle.

NEED HELP?

1 866 427-2999

maestro.support@idatalink.com

ADDITIONAL INFORMATION AND ACCESSORIES

Installation, product information, vehicle specific videos.

[VIDEO HELP](#)



Last flash information, steering control configuration, vehicle information.

[VERIFY FLASH](#)



Software to program module.

[WEBLINK](#)



Configuring the RR2's Programmable Outputs

[Maestro RR2 Programmable Outputs Guide](#)

HEAD UNIT ADAPTER: ACC-HU-KEN1

Factory microphone interface module MIC1

APX compatible radions: Kenwood and JVC

Screen extension harness (required) JVD KS-UA50 or Kenwood KCA-A150EX (sold separately by radio manufacturer)

Radar Detectors



[Radar Installation Guides](#)

APX-S8-GM2 COMPONENTS

QUICK START GUIDE



3MVHB
for mounting RR/RR2 module.



SM5-6P*8
8x [M5, 6mm screw]



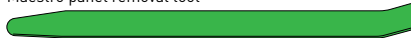
GND



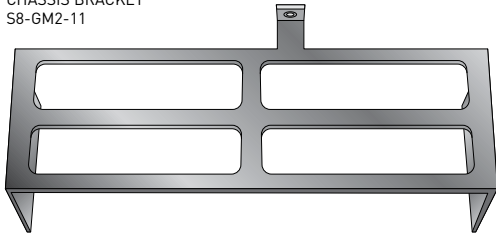
SM5-8P*1
1x [M5, 8mm screw]



Maestro panel removal tool



CHASSIS BRACKET
S8-GM2-11



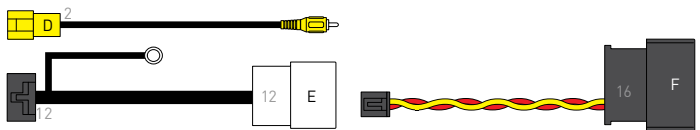
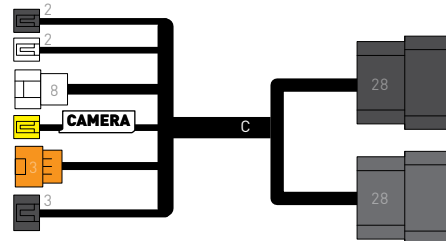
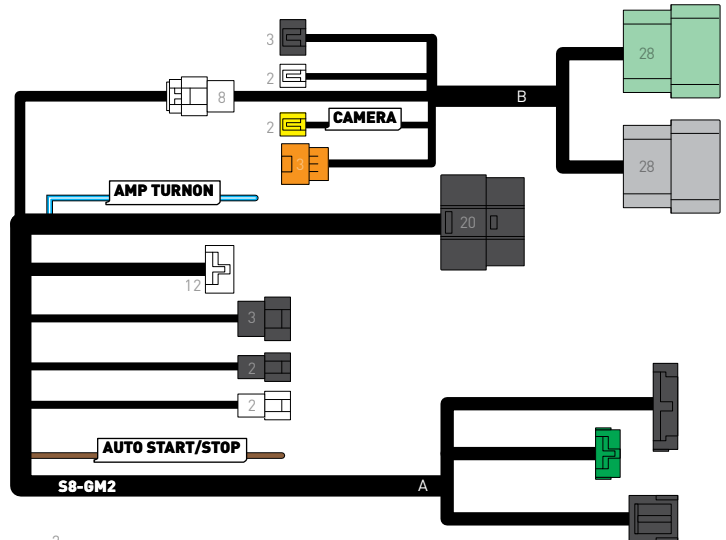
SCREEN BRACKETS
TOP S8-GM2-01



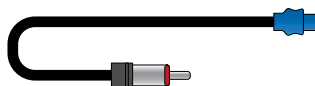
BOTTOM S8-GM2-02



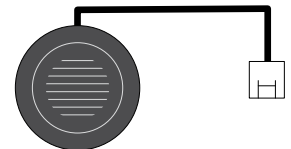
MAIN HARNESS HRN-S8-GM2



AM/FM ANTENNA ADAPTER



SP1 SPEAKER



RIBBON CABLE ADAPTER



USB-A-C, USB-C-C ADAPTER



VEHICLE LIST

MAKE	MODEL *	TRIM	YEAR	INSTALL TYPE	NOTE:
CHEVROLET	Silverado 1500	With 8" radio	19-21	01	Does not retain factory amplifier. Does not support OEM HD Camera (RPO code UVB)
	Silverado 2500/3500	With 8" radio	20-23	01	Does not retain factory amplifier. Does not support OEM HD Camera (RPO code UVB)
GMC	Sierra 1500	With 8" radio	19-21	01	Does not retain factory amplifier. Does not support OEM HD Camera (RPO code UVB)
	Sierra 2500/3500	With 8" radio	20-23	01	Does not retain factory amplifier. Does not support OEM HD Camera (RPO code UVB)

* Click on your model to go to the related install type instruction page.

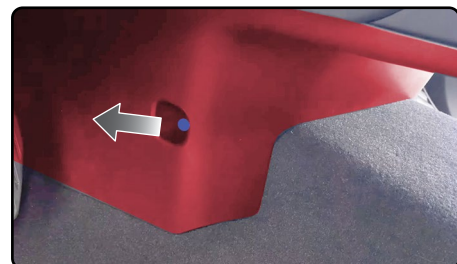
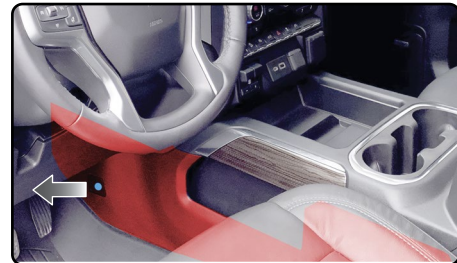
DISASSEMBLY P1 /3

INSTALL TYPE-01

NOTE: The amplifier is not retained. Bypass factory amplifier to integrate audio as desired (adding amplifiers, replacing speakers, etc.) as MOST network is not supported at this time with the Maestro interface. Ensure the amplifier remains connected to power, ground and data connections in the vehicle. Only unplug the two connectors shown in the vehicle wire reference chart.

If the center console goes all the way to the dashboard, follow steps 1, 2, 3. If not, go to step 4.

1. Using a plastic panel removal tool, remove the small trim plate.
2. Remove the screw located under the small plate.
Using a panel tool, remove both center console side panels by pulling outwards.
3. Raise the lid on the console, then unclip and lift the center console top panel.
4. Remove the 7mm screw, then pull passenger side out to release one clip.
Then remove the panel by pulling rearward.
5. Using panel tool, release the bottom panel starting from one side and working to the other pulling straight back.



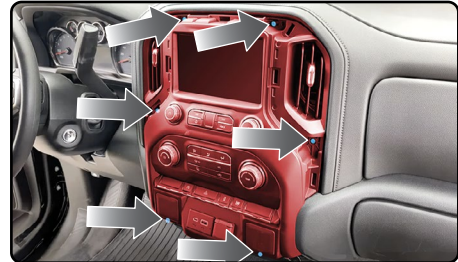
DISASSEMBLY P2 /3

INSTALL TYPE-01

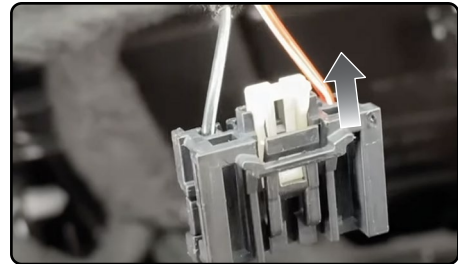
6. Using a plastic panel removal tool, remove radio trim bezel around the radio screen/climate controls.



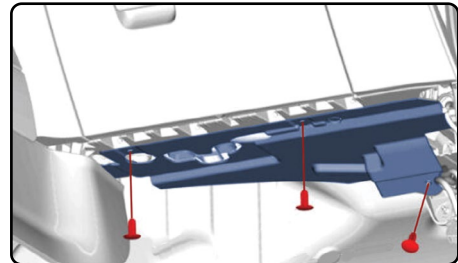
7. Remove six (6) T15 Torx screws from dash panel. Pry outward to release the clips holding to dash. Disconnect and remove.



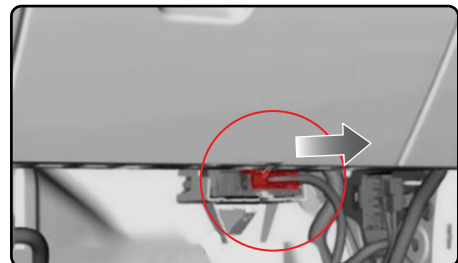
Note: the connectors require security tab pulled back first, then can be unplugged.



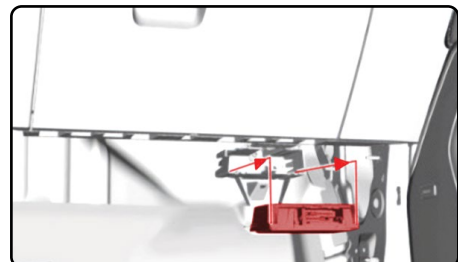
8. Remove the three clips securing the under dash panel below the glovebox. Pull the panel down.



9. Remove the connectors from the power supply converter.



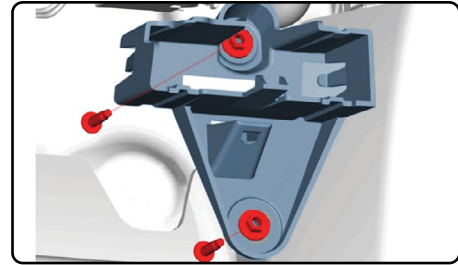
10. Releasing the retainers, disengage and slide out the power supply converter.



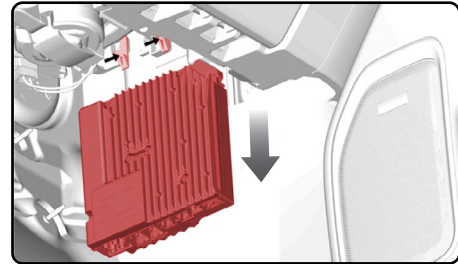
DISASSEMBLY P3/3

INSTALL TYPE-01

11. Remove the two (2) nuts securing the power supply converter mount. Remove.



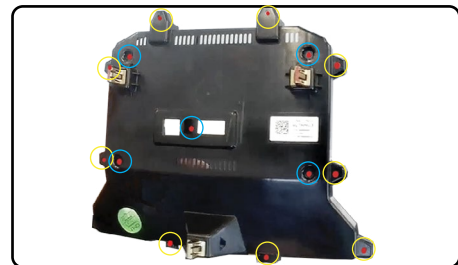
12. Depress the tabs to release the radio chassis.
Disconnect, then remove radio chassis.



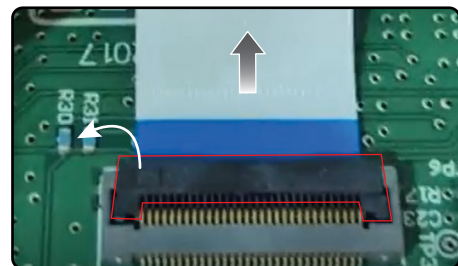
13. To gain access to USB hub, press the retaining tabs on USB panel and pull out to remove the HUB.
Install USB HUB from S8-GM2 kit. USE USB-C cable. DO NOT use USB-A.



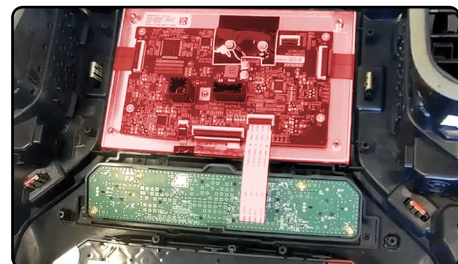
14. Remove the ten (10) gold T15 screws around the radio screen cover panel and the five (5) silver T15 screws on the back of the screen.
Lift the rear cover off the screen.



15. Disconnect the ribbon cable by lifting the locking tab on the lower circuit board, then sliding it out (the ribbon cable should release without force, check the retaining clip if it's not coming out easily).



16. Remove factory screen.

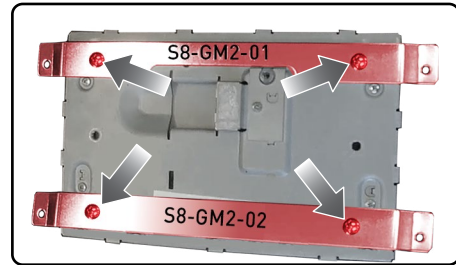


RADIO ASSEMBLY P1/1

INSTALL TYPE-01

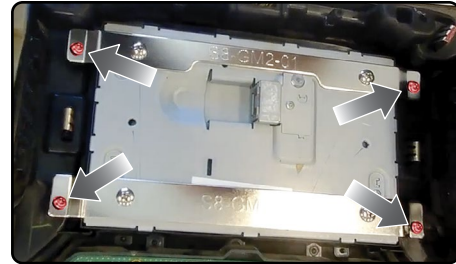
1. Install the brackets on the new radio screen. Install the S8-GM2-01 at top of the radio using two of the SM5-6P screws (ensure the radio's oriented correctly, with the wiring connections closest to the S8-GM2-01 bracket).

Install the S8-GM2-02 bracket at the bottom, using two of the SM5-6P screws.



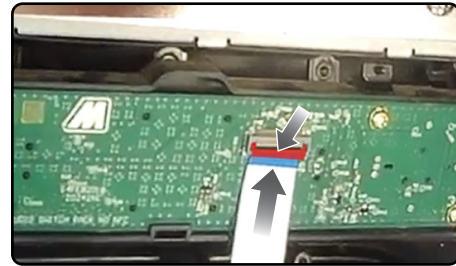
2. Install the screen into the factory panel, ensuring the S8-GM2-01 bracket is on top.

Secure with four (4) of the gold T15 screws removed during disassembly.



3. Install the new ribbon cable/adaptor box, ensuring the cable is installed as shown. If reversed, screen will NOT function properly. Flip the latch down to secure the ribbon cable in place.

NOTE – The GOLD contacts on the ribbon must face down to the circuit board, while the BLUE color faces UP when inserting the cable into the board.

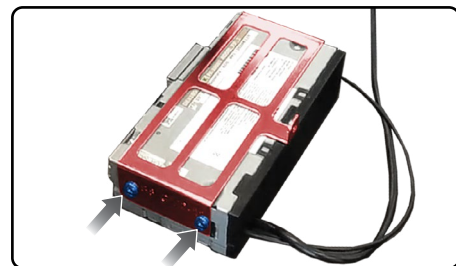


4. Cut/apply included 3m adhesive to the black module and adhere to the S8-GM2-02 bracket.

NOTE: DO NOT use the factory ribbon cable, leave it attached to the screen!



5. Secure the S8-GM2-11 bracket to the radio chassis using four SM5-6P screws.



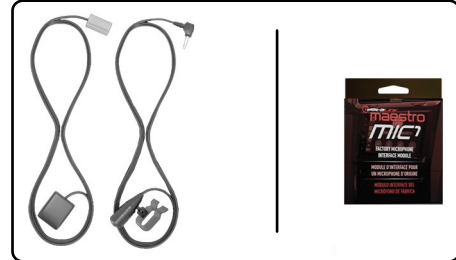
INSTALL AND CONNECT P1/2

INSTALL TYPE-01

1. Locate the main factory radio harness behind glove box (right end of dash). If the connectors are light green and light gray, connect them to B-S8-GM2 harness. If the factory connectors are black and dark gray, discard the B harness and make connections to C-S8-GM2.
Make sure the 8-pin white, the 2-pin white and the 3-pin black from B (or C-S8-GM2, if using this one), are connected to matching connectors on main A-S8-GM2 harness.

Connect the 2-pin yellow camera connector to D-S8-GM2 RCA cable.

You will need to install the GPS antenna and Bluetooth microphone to the recommended location by the radio manufacturer. Use the optional ADS-MIC1 to retain the factory microphone.

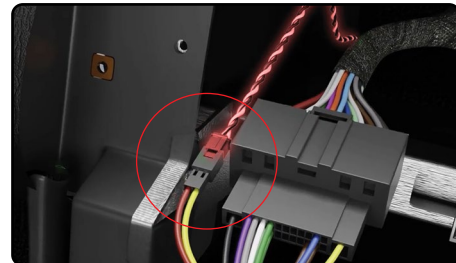


2. Connect the Maestro RR to the S8-GM2 T-harness. Then, connect the 4-pin data cable and 3.5mm audio cable to the Maestro module (the 4-pin data cable and 3.5mm audio cable are provided with the Maestro module).

Connect the supplied chime speaker to the Maestro.

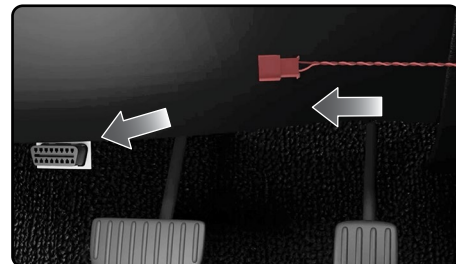


3. Connect the OBDII harness (F-S8-GM2) black 2-pin plug to the main GM2 T-harness (A-S8-GM2).



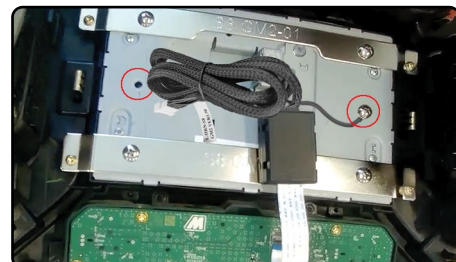
4. Route the OBDII cable through the dash to the OBDII port in vehicle.

Connect the OBDII plug to the OBDII port.



5. Route and connect the E-S8-GM2 harness 12-pin white connector to white connector on A-S8-GM2 main harness. Plug 12-pin black connector (E-S8-GM2) to ribbon cable adapter (plugged into circuit board in radio bezel).

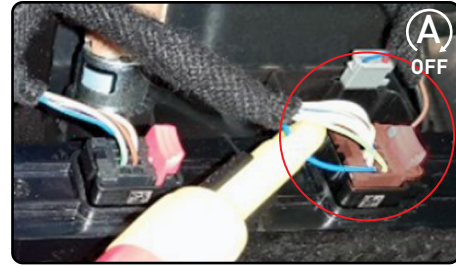
Attach the ground terminal (from E-S8-GM2) to the back of the screen using the single Phillips screw.



INSTALL AND CONNECT P2 /2

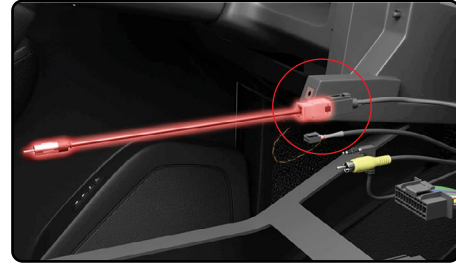
INSTALL TYPE-01

6. If equipped with START-STOP: route and connect brown AUTO START/STOP wire to blue wire on pin 12 of 12-pin black (or brown) connector, behind radio panel, near power port.



7. Press the S8-GM2 T-harness and Maestro module into the dash cavity. Install the chime speaker and route the 2-pin end to the radio cavity.

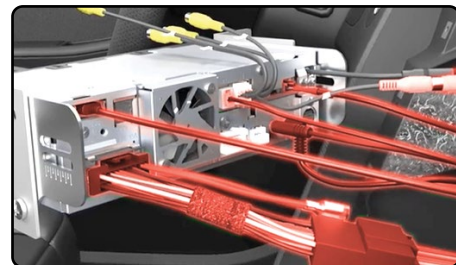
Connect the supplied antenna adapter to the factory antenna connection.



8. Route USB-C cables from radio bezel to the radio chassis location, right end of dash. (DO NOT use USB-A cables).

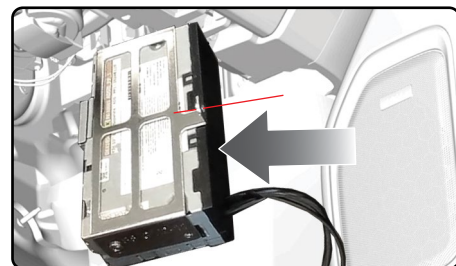
9. Make all connections to the back of the aftermarket radio (use head unit adapter OR cut connector from the S8-GM2 harness and connect the wires as shown in the wiring diagram). Make sure to connect the 4-pin data cable to the iDatalink I/F port and 3.5mm audio cable to the iDatalink I/F port.

Secure USB with metal clip.



10. Mount the radio chassis into the factory radio tuner location, right end of dash. Secure it with the SM5-8P screw.

Route and connect the display cables to the back of the screen. Use extension harness (JVD KS-UA50 or Kenwood KCA-A150EX, sold separately) to reach the screen.



11. Reinstall the radio bezel into place as it was originally. Secure it with the four (4) 7mm screws removed earlier.

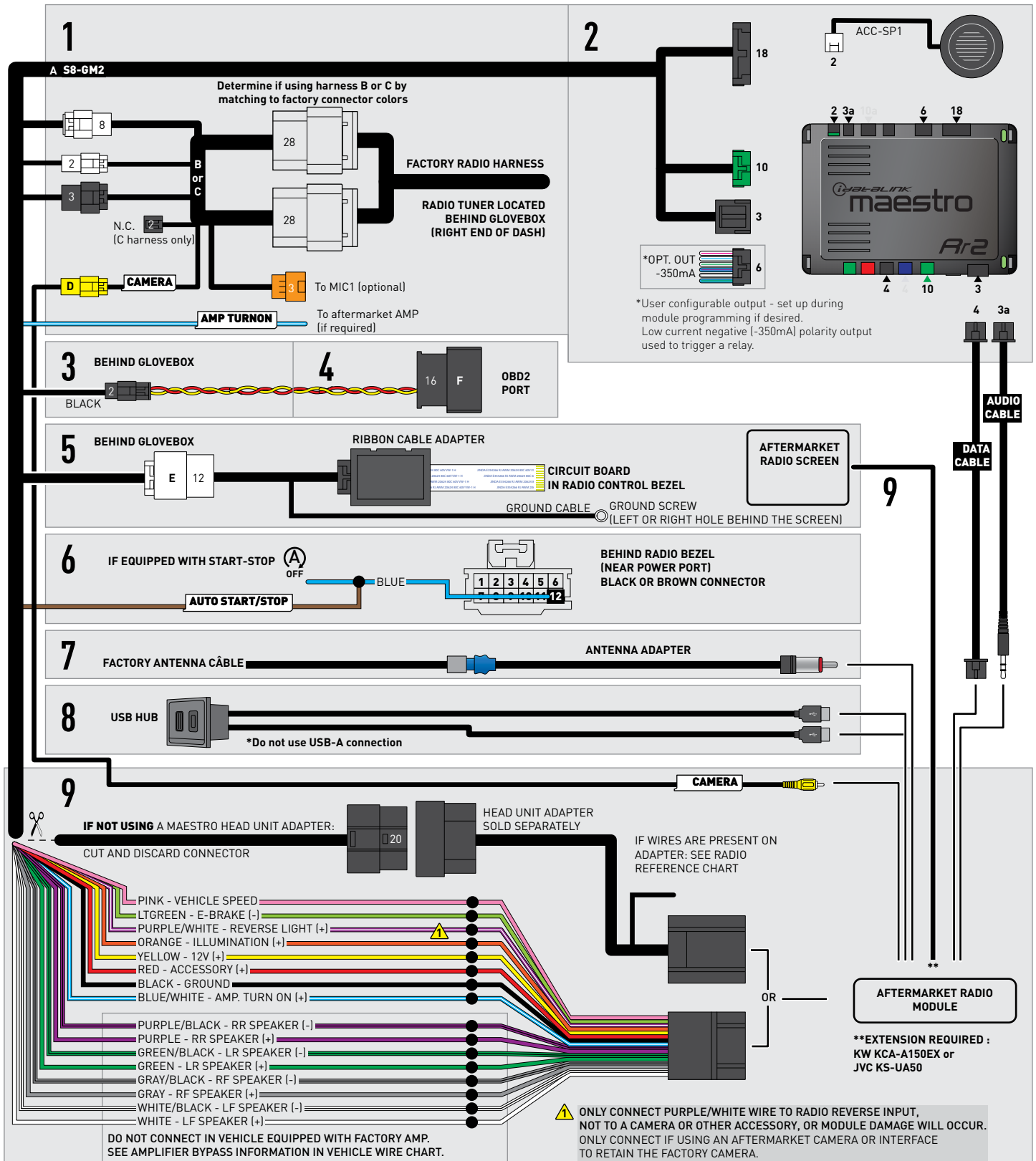
Put everything that was disassembled back into place, using reverse order of the removal steps.



WIRING DIAGRAM

INSTALL TYPE-01

SOME CABLES INCLUDED WITH MAESTRO MODULE ARE NOT USED



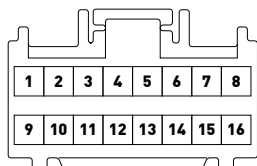
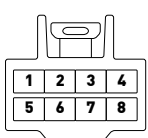
VEHICLE WIRE REFERENCE CHART

INSTALL TYPE-01

Wire Description	Connector Name	Connector Color	Connector Type	Position	Wire Color	Polarity	Wire Location
LR Subwoofer	~	~	8 pin	01	Blue/Gray	(+)	Amplifier, back wall of the cab, center of the wall
LR Subwoofer	~	~	8 pin	05	Green/Black	(-)	Amplifier, back wall of the cab, center of the wall
RF Speaker	~	~	8 pin	02	Yellow	(+)	Amplifier, back wall of the cab, center of the wall
RF Speaker	~	~	8 pin	06	Yellow/Black	(-)	Amplifier, back wall of the cab, center of the wall
LF Speaker	~	~	8 pin	03	Blue	(+)	Amplifier, back wall of the cab, center of the wall
LF Speaker	~	~	8 pin	07	Brown/Blue	(-)	Amplifier, back wall of the cab, center of the wall
RF Midrange	~	~	16 pin	03	Blue/Violet	(+)	Amplifier, back wall of the cab, center of the wall
RF Midrange	~	~	16 pin	02	Brown/Black	(-)	Amplifier, back wall of the cab, center of the wall
RR Speaker	~	~	16 pin	04	White	(+)	Amplifier, back wall of the cab, center of the wall
RR Speaker	~	~	16 pin	12	Blue/Black	(-)	Amplifier, back wall of the cab, center of the wall
LR Speaker	~	~	16 pin	05	Green	(+)	Amplifier, back wall of the cab, center of the wall
LR Speaker	~	~	16 pin	13	Green/Black	(-)	Amplifier, back wall of the cab, center of the wall



AMPLIFIER CONNECTORS (WIRE SIDE)



RADIO WIRE REFERENCE CHART

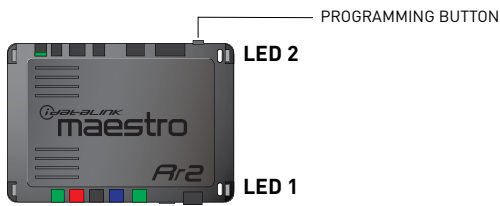
S8-GM2 T-harness Wire Description	Polarity	Wire Color on Maestro T-Harness	Wire Color on Kenwood cable
Illumination	(+)	Orange	Orange/White
Reverse Light*	(+)	Purple/White	Purple/White
E-Brake	(-)	Lt Green	Lt Green
VSS (vehicle speed sensor)	(DATA)	Pink	Pink

***Note:** REVERSE LIGHT purple/white wire is a low current positive output used to trigger the radio only. Do NOT connect to anything other than the radio's reverse input.
If no camera is installed/desired, do not connect the radio's reverse wire. If installing an aftermarket camera, do NOT connect power for the camera to the Maestro's purple/white wire or module damage will occur.

Head unit adapter wiring (optional accessory, sold separately)

ACC-HU-KEN1 Wire Description	Polarity	Wire Color on Adapter	Kenwood Radio
CAM	(+)	Green/Red	Refer to camera/radio manual
CAM	(-)	Green/White	Refer to camera/radio manual
Steering Wheel Controls	(DATA)	Blue/Yellow	n/a

MODULE DIAGNOSTICS



LED 1 Module/Firmware status	LED 2 Bluetooth activity	LED STATUS	DIAGNOSTIC
● or ●		RED or GREEN flashing	LED flashes 1 or more times, either red or green, when a steering wheel button is pressed : normal operation.
●		1 RED flash	Module has no firmware. Flash module using Weblink Desktop and log in. Do <u>NOT</u> use DEMO MODE.
●		2 RED flashes	Problem detected. Consult troubleshooting table.
●		1 GREEN flash	After radio boots up : Normal operation.
	●	3 GREEN flashes	Bluetooth is activated. Turns off after one minute: Normal operation.
●	●	OFF	Normal operation (inactive).

TROUBLESHOOTING TABLE

PROBLEM	SOLUTION
Gauges do not work, radio shows OBD2 Error 1 or Error 2.	<p>Ensure OBDII connector is securely attached to the OBD2 connector of the vehicle. If you hardwired connections at the OBDII, check connections at the OBDII connector. Make sure the RED/BROWN wire is on PIN 6 and the YELLOW/BROWN wire is connected to PIN 14 of the OBDII connector. Do not use T-Taps. Soldering or military splicing methods are recommended.</p> <p>If anything else is connected to the OBD2 or CAN wires of vehicle (programmer, throttle controller, insurance tracker, etc.) try unplugging it to see if gauges work. If gauges work without it installed, call tech support for options. Reset the RR.</p>
The light on the Maestro is blinking RED TWICE and the radio IS turning on.	<p>Ensure the 4-pin data cable is connected between the radio and the RR, and that it is plugged into the black port on the Maestro RR. The red and blue ports on the RR should be empty, unless using MIC1 (connects to red port).</p> <p>Make sure the correct radio model and serial number were entered during the flash. Verify the radio's serial number entered during the flash matches what is listed on the radio screen. This can be found in the settings of the radio, listed as Device Id, Device Number, or Serial Number.</p>
The light on the Maestro is blinking RED TWICE but radio is NOT turning on.	<p>Ensure screen cables/extensions are all fully seated, no bent pins, wires pinched, etc.</p> <p>Test red and yellow wires for DC voltage at radio chassis using a multimeter. Contact support if no voltage on red or yellow.</p>
No sound.	<p>BOSE - amplifier must be bypassed. Non-amplified - inspect speaker wire connections at step 9. Use a test speaker to identify if radio is outputting sound. If no output, there may be an issue with the vehicle wiring or the radio.</p>
Park assist chime not working.	<p>Vehicle with amplifier: the BOSE amplifier must remain connected to power, ground and data, or park assist will stop working.</p>

MAESTRO RR RESET PROCEDURE:

Turn the key to the OFF position, then disconnect all connectors from the module.
 Press and hold the module's programming button and connect all the connectors back to the module. Wait, the module's LED will flash RED rapidly (this may take up to 10 seconds).
 Release the programming button. Wait, the LED will turn solid GREEN for 2 seconds to show the reset was successful.

TECHNICAL ASSISTANCE

Phone: 1-866-427-2999

Email: maestro.support@idatalink.com

IMPORTANT: To ensure proper operation, the aftermarket radio needs to have the latest firmware from the manufacturer. Please visit the radio manufacturer's website and look for any updates pertaining to your radio.