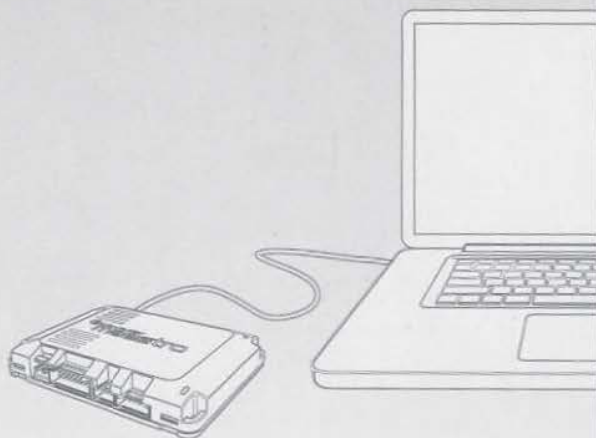




SW | AR | AR | SW HD

QUICK START GUIDE



FOLLOW THE WEB PROGRAMMING
STEPS INSIDE PRIOR TO INSTALLATION.



WEB PROGRAMMING

1- INSTALL THE WEBLINK DESKTOP APPLICATION

Go to www.idatalinkmaestro.com/plugin, select your software version (Mac or PC) and follow the installation steps. Be sure to review the system requirements before installing.

2- REGISTER A WEBLINK ACCOUNT

Once installed, complete the Weblink registration process and log into Weblink.

3- CONNECT THE MODULE TO YOUR COMPUTER

Use the included USB cable to connect your iDatalink Maestro module to your computer.

4- WEBLINK PROGRAMMING

Follow the programming steps until your module is flashed, then download your install guide and owner's manual if applicable.

5- COMPLETE VEHICLE-SPECIFIC INSTALLATION

Follow the steps in your install guide and complete the installation. ADS recommends having your iDatalink Maestro device installed by a certified technician. **Additional accessories may be required and sold separately.**



TECHNICAL SUPPORT

877.212.6169

idatalinkmaestro.com

LIMITED 1-YEAR WARRANTY

Automotive Data Solutions Inc. ("ADS") warrants to the original purchaser of the product that the following components product shall be free of defects in material and workmanship under normal use and circumstances for the period of one (1) year from the date of original installation.

"Authorized Dealer" is defined by ADS as a company who qualifies to purchase products directly from ADS, or one of its approved distributors. Thus, products not sold nor installed by an Authorized Dealer are not covered by this warranty. This includes, but is not limited to, ADS products sold on Amazon.com, eBay.com, Walmart.com and Newegg.com. To find an authorized retailer near you, visit <http://maestro.idatalink.com/find-product>.

In the event of any product malfunction during the Warranty period, the original purchaser must return to the Authorized Dealer where it was originally purchased with the original proof of purchase. If a malfunction is detected, the Authorized Dealer will elect to repair or replace the product at its discretion. Labor costs may be applicable and are at the discretion of the Authorized Dealer.

ADS is not responsible for any damages whatsoever, including but not limited to any consequential damages, incidental damages, damages for loss of time, loss of earnings, commercial loss, loss of economic opportunity and the like that may or may not have resulted from the installation or operation of an iDatalink Maestro product.



TECHNICAL SUPPORT

877.212.6169

idatalinkmaestro.com

CHEVROLET AND GMC VEHICLES
WITH 8" SCREEN
(SEE DETAILS INSIDE)

INSTALL GUIDE

GM3-RR-DS-(APX-S8-GM3)-EN

RETAINS STEERING WHEEL CONTROLS AND MORE!

(DOES NOT RETAIN FACTORY AMPLIFIER)



**REQUIRED
HEAD UNIT
ADAPTER**

PRODUCTS REQUIRED

iDatalink Maestro RR Radio Replacement Interface
iDatalink Maestro APX-S8-GM3 Dash Kit
APX compatibles radios

PROGRAMMED FIRMWARE: GM3-RR-DS

WELCOME

Congratulations on the purchase of your iDatalink Maestro RR Radio replacement solution. You are now a few simple steps away from enjoying your new car radio with enhanced features.

Before starting your installation, please ensure that your iDatalink Maestro module is programmed with the correct firmware for your vehicle and that you carefully review the install guide.

Please note that Maestro RR will only retain functionalities that were originally available in the vehicle.

NEED HELP?

☎ 1 866 427-2999

✉ maestro.support@idatalink.com

ADDITIONAL INFORMATION AND ACCESSORIES

Installation, product information, vehicle specific videos.

[VIDEO HELP](#)



Last flash information, steering control configuration, vehicle information.

[VERIFY FLASH](#)



Software to program module.

[WEBLINK](#)



HEAD UNIT ADAPTER (REQUIRED):	ACC-HU-KEN1
-------------------------------	-------------

Factory microphone interface module	MIC1
-------------------------------------	------

APX compatible radios:	Kenwood and JVC
------------------------	-----------------

Screen extension harness (required for some vehicles)	JVC KS-UA50 or Kenwood KCA-A150EX (sold separately by radio manufacturer)
---	--

Antenna adapter	SAT1, SAT2
-----------------	------------

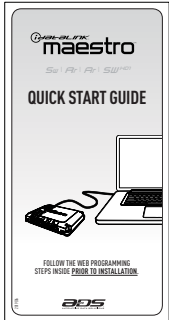
Radar Detectors



[Radar Installation Guides](#)

APX-S8-GM3 COMPONENTS

QUICK START GUIDE



3MVHB
for mounting RR/RR2 module.



SM4-5PB*2
2x (M4 5mm screw)



SM3-5P*4
4x (M3 5mm screw)



SM5-6P*10
10x (M5 6mm screw)



SM5-8P*6
6x (M5 8mm screw)



GND



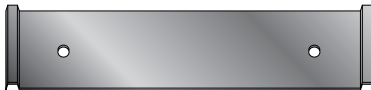
Maestro panel removal tool



MAIN SCREEN BRACKET S8-GM3-01



IMPALA LOWER SCREEN BRACKET S8-GM3-03



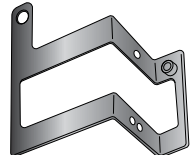
IMPALA UPPER SCREEN BRACKET S8-GM3-04



YUKON CHASSIS BRACKET S8-GM3-11



IMPALA CHASSIS BRACKET ADAPTER
S8-GM3-14



CORVETTE MAIN SCREEN BRACKET
S8-GM3-02



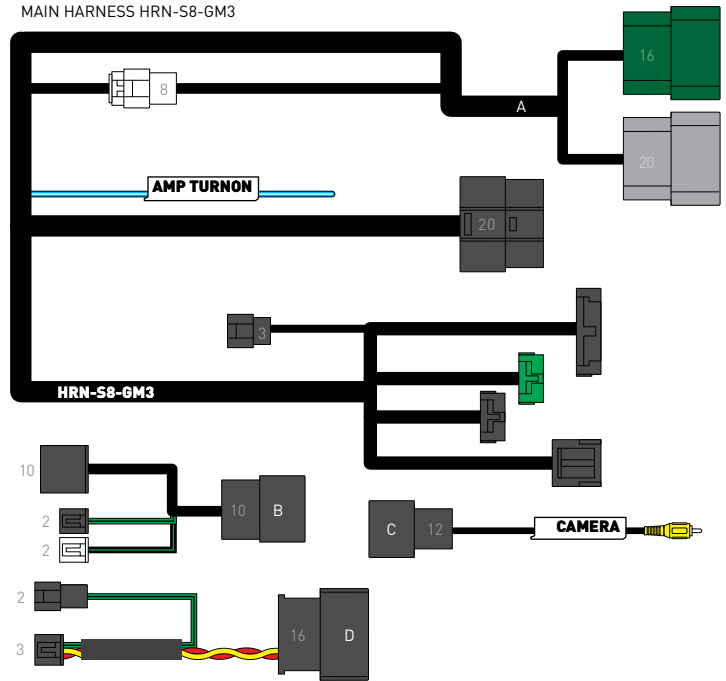
CORVETTE CHASSIS BRACKET ADAPTERS
LEFT (L) S8-GM3-12
RIGHT (R) S8-GM3-13



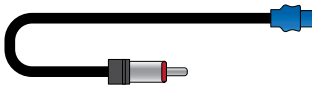
CABLE TIES



MAIN HARNESS HRN-S8-GM3



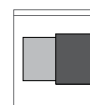
AM/FM ANTENNA ADAPTER



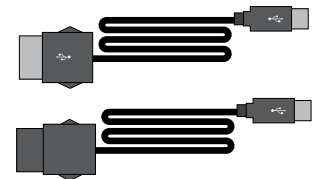
SP1 SPEAKER



CONTROL ACTIVATION USB



USB ADAPTERS
USBA-USBC, USBC-USBC



VEHICLE LIST

MAKE	MODEL *	TRIM	YEAR	INSTALL TYPE	NOTE: DOES NOT RETAIN FACTORY AMPLIFIER
CHEVROLET	Corvette	With 8" touchscreen with or without NAV	14-19	03	DOES NOT retain performance data recorder. Required: JVC KS-UA50 or Kenwood KCA-A150EX
	Impala	With 8" touchscreen with or without NAV	14-19	02	Required: JVC KS-UA50 or Kenwood KCA-A150EX
	Suburban	With 8" touchscreen with or without NAV	15-20	01	
	Tahoe	With 8" touchscreen with or without NAV	15-20	01	
GMC	Yukon	With 8" touchscreen with or without NAV	15-20	01	
	Yukon XL	With 8" touchscreen with or without NAV	15-20	01	

* Click on your model to go to the related install type instruction page.

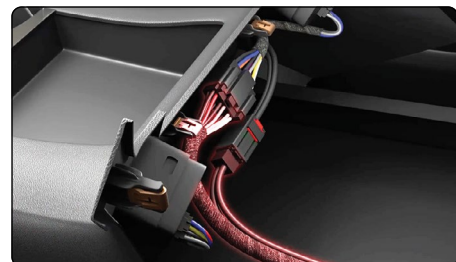
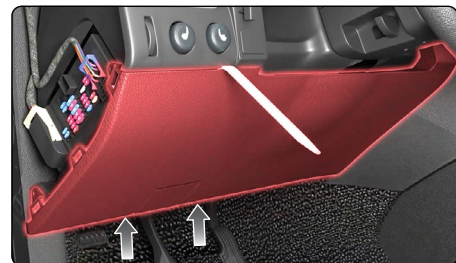
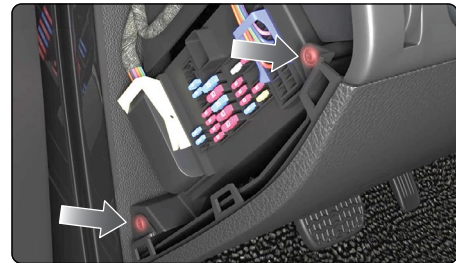
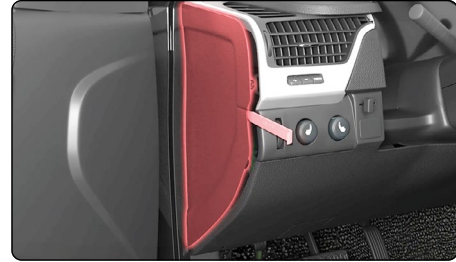
DASH DISASSEMBLY P1 / 4

INSTALL TYPE-01

NOTE: This installation is quite difficult. Although this guide offers step-by-step instructions, we strongly recommend professional installation.

1. Before you begin, make sure the radio screen is in the up position.
2. Using the supplied panel tool, remove the fuse box cover panel.
3. Remove the two (2) T15 Torx screws located behind the panel.
4. Remove the two (2) 715 Torx screws located at the bottom of the dash.

Using the panel tool, remove the dash panel below the steering column. To avoid disconnecting the hood release, simply lay the panel in the foot well.
5. Open the center console lid. Pull up and back on the center console to release the clips securing it.
6. Disconnect the two (2) wiring harnesses from the back of the console. (It is not necessary to remove the console, but makes the installation easier).



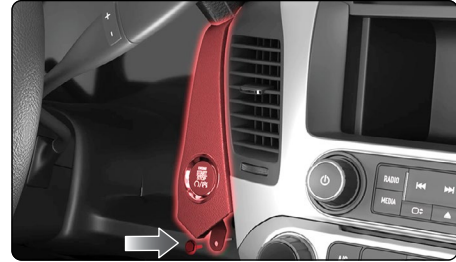
DASH DISASSEMBLY P2 /4

INSTALL TYPE-01

7. Using the panel tool, remove the passenger side dash panel. There are a total of 8 clips securing it into the dash.



8. Remove the single (1) 7mm screw from the small panel to the left of the radio. If equipped with push to start, disconnect the wiring harness.



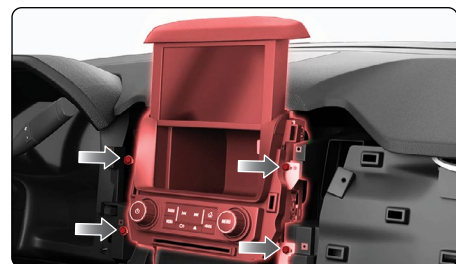
9. Remove the two (2) 7mm screws below the climate controls. Pull outward on the dash bezel to release the clips securing it. Then, disconnect the single wiring harness from the back.



10. Remove the six (6) 7mm screws securing the vents. Remove the vents.



11. Remove the four (4) 7mm screws securing the radio assembly. Carefully remove the radio assembly.



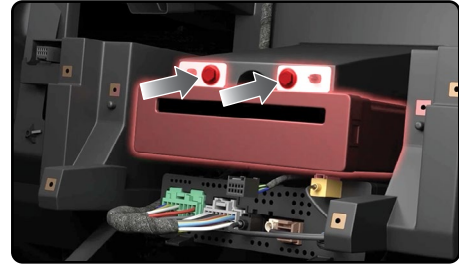
12. Disconnect the wiring harness and USB connections.



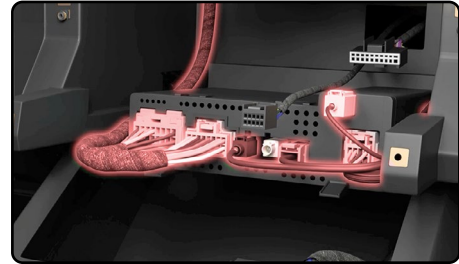
DASH DISASSEMBLY P3/4

INSTALL TYPE-01

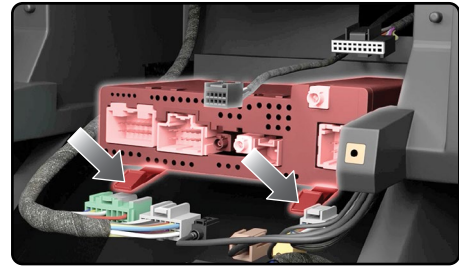
13. Remove the two (2) 7mm screws securing the CD Player. Then, disconnect the single (1) wiring harness from the back.



14. Disconnect the wiring harnesses, antenna connections and USB cables from the radio control module.

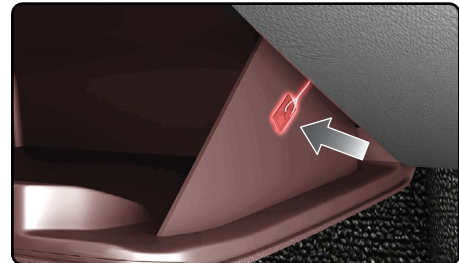


15. To remove the radio control module, press down on the 2 clips at the bottom of the module and slide the module out.



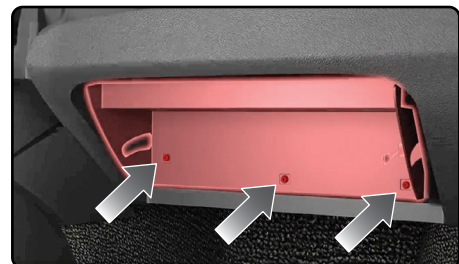
16. Open the glove compartment and disconnect the hanger on the right side.

Press inward on the back of the compartment to release the retaining clips.



17. Remove the three (3) T15 Torx screws behind the glove compartment.

Next, remove the panel at the back of the glove compartment.



18. Locate the HMI module under the dash. You will need to access it during the installation.

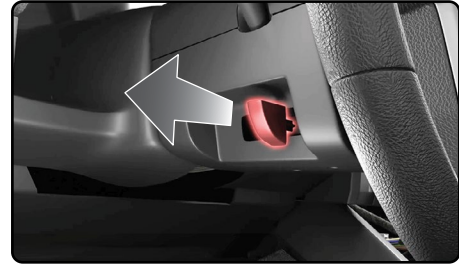


DASH DISASSEMBLY P4 /4

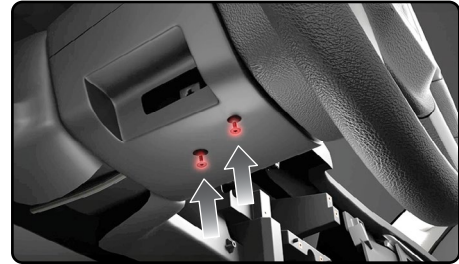
INSTALL TYPE-01

- 19.** The steering column panels need to be removed to access the clock spring wiring harness.

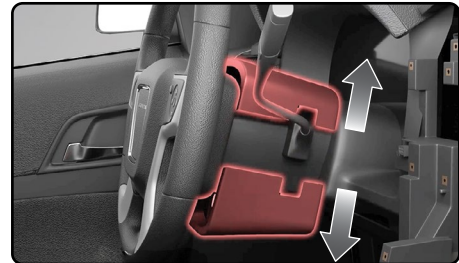
Remove the steering wheel adjustment release lever. You will need to firmly pull on it.



- 20.** Some vehicles have two (2) T10 Torx screws on the bottom panel. Remove them if equipped.



- 21.** Separate the two panels and remove them.

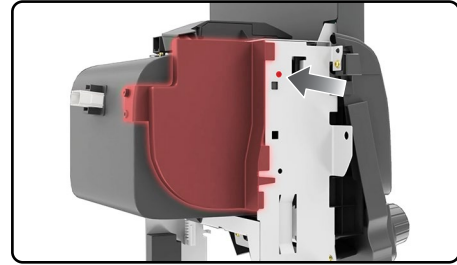


RADIO DISASSEMBLY P1 /3

INSTALL TYPE-01

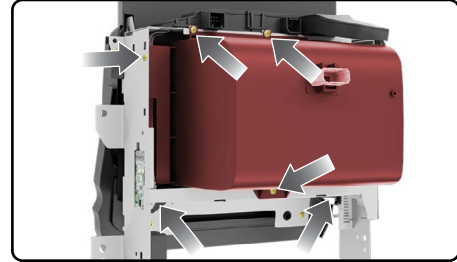
1. Remove the single (1) black T10 screw from the top left side of the assembly.

Remove the side panel from the assembly.



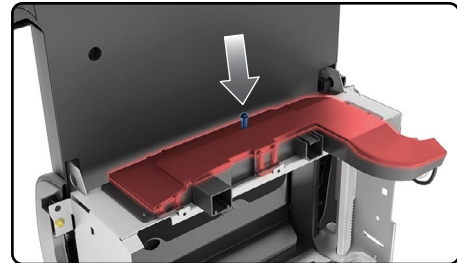
2. Remove the six (6) gold T15 Torx screws securing the pocket to the assembly.

Remove the pocket from the assembly.

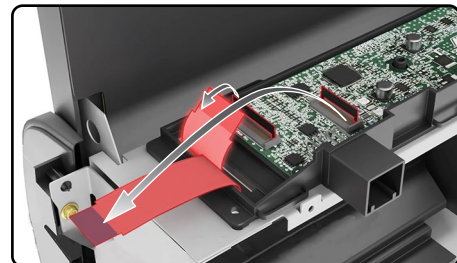


3. Remove the single (1) black T10 Torx screw from the top plastic cover. Then, release the locking tabs to remove the cover.

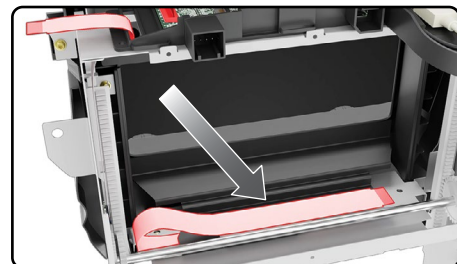
Release the factory USB port from the pocket by prying outward on the two clips securing it in place. Replace factory port with the included USB C to USB C cable.



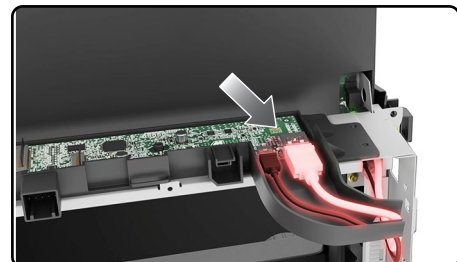
4. Disconnect the two (2) ribbon cables from the control board by carefully lifting the locking tabs.



5. Feed the radio control ribbon cable down to the base.



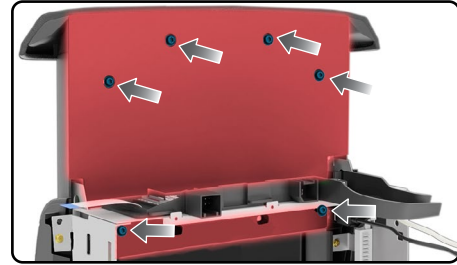
6. Disconnect the two (2) USB cables from the control board.



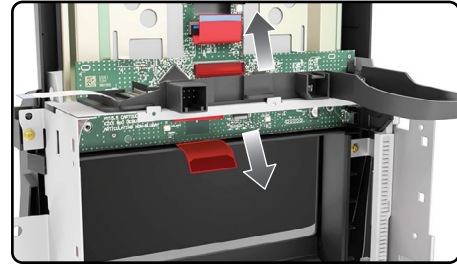
RADIO DISASSEMBLY P2/3

INSTALL TYPE-01

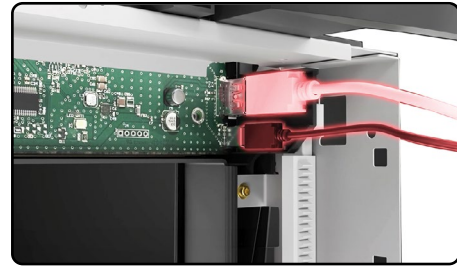
7. Remove the six (6) T10 Torx screws from the back cover panel. Then, carefully remove the panel.



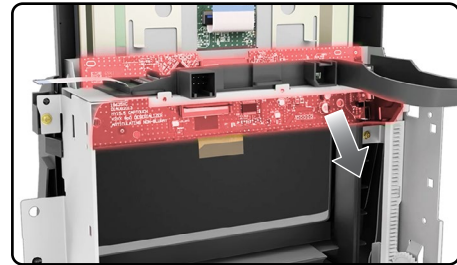
8. Carefully, disconnect the 2 small ribbon cables from the monitor control board.



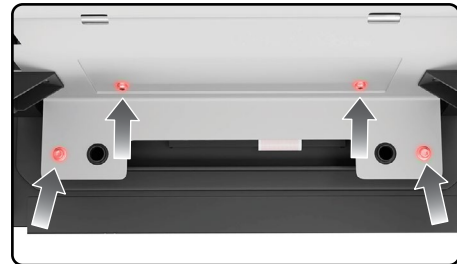
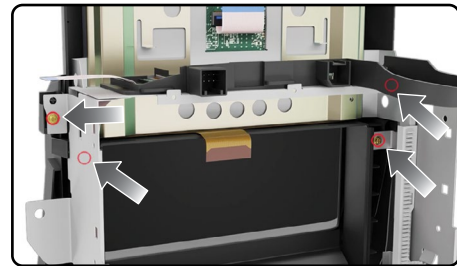
9. Disconnect the two (2) USB cables from the monitor control board. (These will not be needed for the installation).



10. Carefully, remove the monitor control board from the assembly (this will not be needed for the installation).



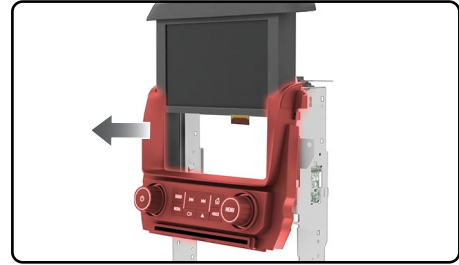
11. Remove the eight (8) gold T15 Torx screws securing the screen bezel and radio controls to the assembly.



RADIO DISASSEMBLY P3 /3

INSTALL TYPE-01

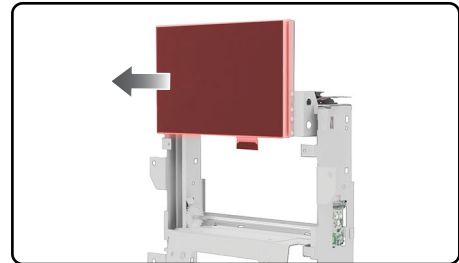
12. Remove the radio controls from the assembly.



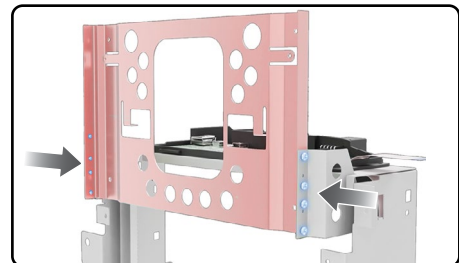
13. Remove the radio bezel from the assembly.



14. Remove the radio display from the assembly.



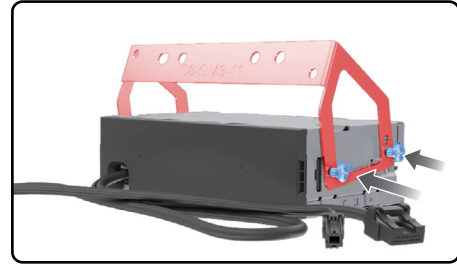
15. Remove the eight (8) small Phillips screws securing the screen bracket, then remove it.



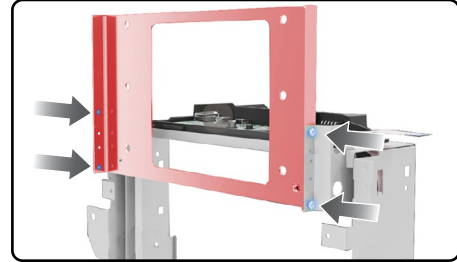
RADIO-BRACKETS ASSEMBLY P1 /3

INSTALL TYPE-01

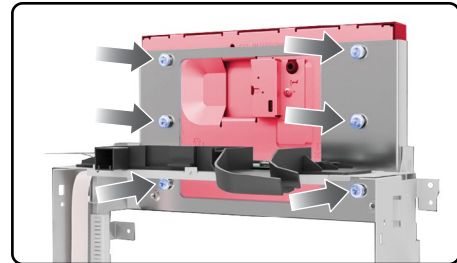
1. Align S8-GM3-11 radio bracket holes to the radio chassis. Then, secure it with the mounting hardware provided with the radio.



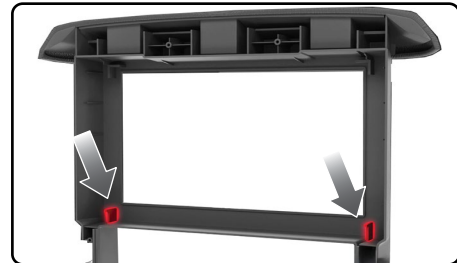
2. Place the S8-GM3-01 screen bracket into the assembly and secure it with the four (4) provided SM3-5P screws.



3. Align the screen to the mounting holes on the bracket. Then, secure it with the six (6) Phillips screws provided in APX-S8-GM3 kit.



4. For the screen bezel to properly fit, the two lower tabs must be cut away. Using a rotary tool, grind off these tabs.



5. Place the screen bezel onto the assembly.



6. Reinstall the radio controls.

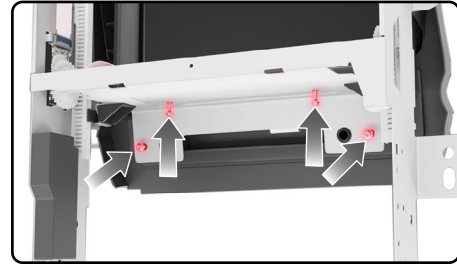


RADIO-BRACKETS ASSEMBLY P2 /3

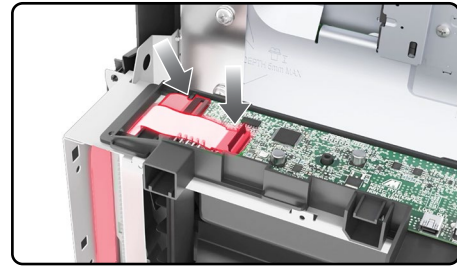
INSTALL TYPE-01

7. Secure the radio bezel and controls with the eight (8) T15 gold Torx screws removed earlier.

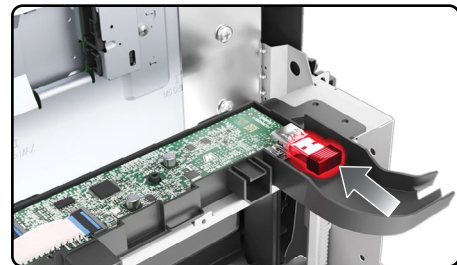
NOTE: **DO NOT overtighten** the screws, just snug to the bezel. If screws are over-tightened, the screw will strip or the radio screen will be damaged.



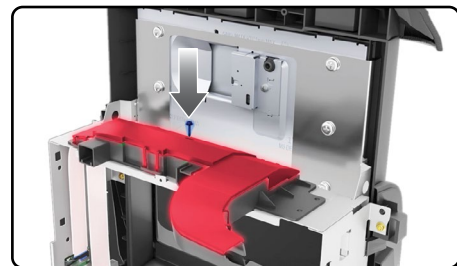
8. Carefully, reconnect the two (2) long ribbon cables removed earlier.



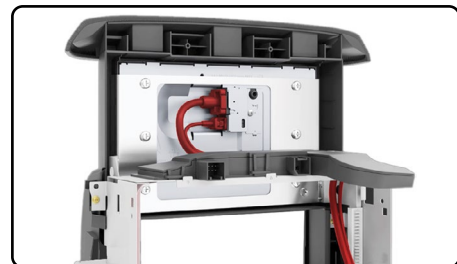
9. **IMPORTANT!** Connect the USB dongle supplied with the APX-S8-GM3 to the control board. This prevents the button illumination from flashing.



10. Reinstall the top cover and secure it with the single (1) T10 black Torx screw.



11. Feed the radio chassis monitor cables through the assembly and connect them to the display (you can use the optional monitor extension cables to allow the assembly and radio chassis to install separately).



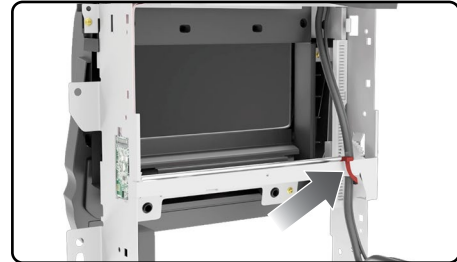
RADIO-BRACKETS ASSEMBLY P3 /3

INSTALL TYPE-01

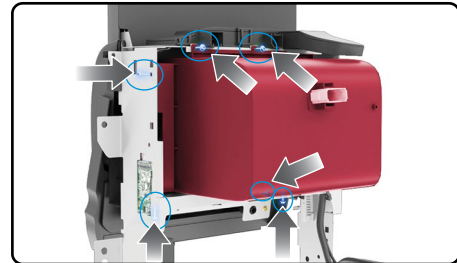
- 12.** Reinstall the back cover and secure it with the six (6) T10 black Torx screws.



- 13.** Secure the monitor cables with a zip tie to the back of the assembly. Make sure there is enough slack.



- 14.** Reinstall the pocket and secure it with the six (6) T10 Torx screws removed earlier.

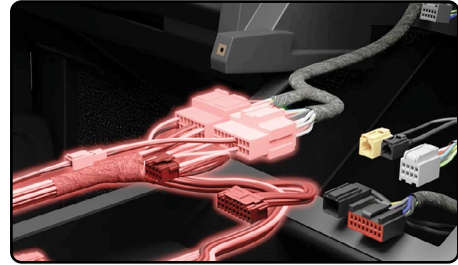


INSTALL AND CONNECT P1 /4

INSTALL TYPE-01

NOTE – if vehicle is equipped with BOSE, amp must be bypassed but remain connected to power, ground, and MOST data network. See vehicle wire reference pages after diagram for amp output wiring information.

1. Connect the S8-GM3 T-Harness to the main factory wiring harness.



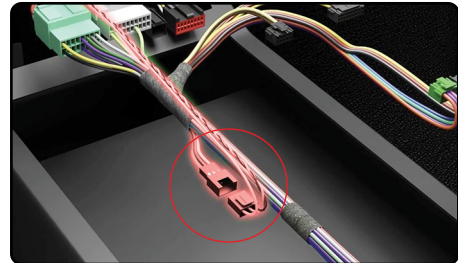
2. Connect the Maestro RR to the GM3 T-harness. Then, connect the 4-pin data cable and 3.5mm audio cable to the Maestro module (the 4-pin data cable and 3.5mm audio cable are provided with the Maestro module).

Connect the supplied chime speaker to the Maestro.



3. Make sure that 2-pin black connector from OBD2 harness (D) is connected to 2-pin black of steering wheel harness (B).

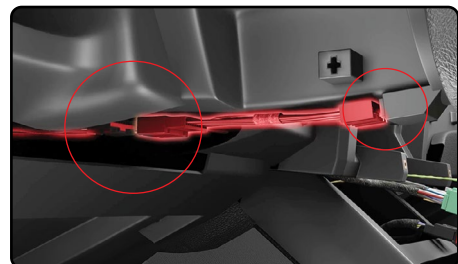
Connect the OBD2 black 3-pin plug to the main GM3 T-harness.



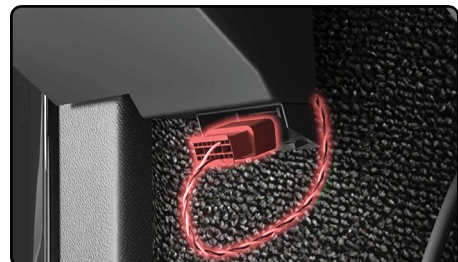
4. Route the OBD2 and steering wheel control harness through the dash to the steering column and OBD2 port.



Disconnect the wiring harness from the clock spring assembly. Connect the SWC T-harness (B) to the clock spring assembly and the vehicle harness into the T-harness (B).



5. Connect the OBD2 plug to the OBD2 port.



INSTALL AND CONNECT P2 /4

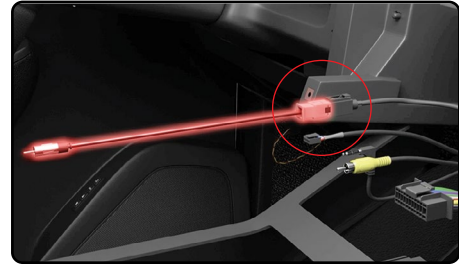
INSTALL TYPE-01

6. Route the camera harness to the HMI module located above the glove compartment. Disconnect the grey 12-pin plug from the HMI module and connect it to the camera harness.



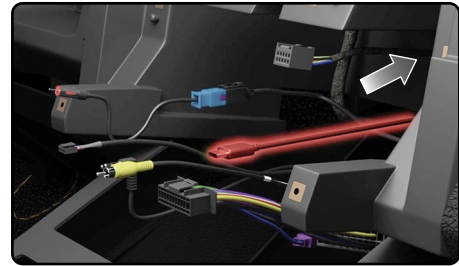
7. Press the S8-GM3 T-Harness, Maestro RR and chime speaker into the lower dash cavity.

Connect the supplied antenna adapter to the black antenna connection.

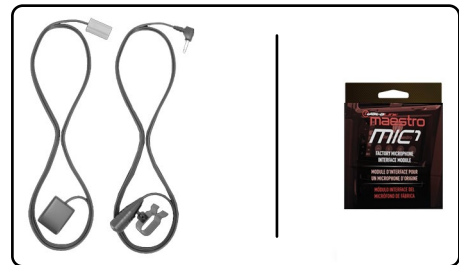


8. Route the USB-C cable supplied with the APX-S8-GM3 to the upper dash cavity. This will connect to the back of the pocket.

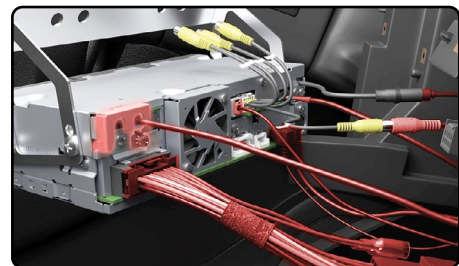
NOTE – DO NOT use the included USB-A cable, it will not work.



9. You will need to install the GPS antenna and Bluetooth microphone to the recommended location by the radio manufacturer. Use the optional ADS-MIC1 to retain the factory microphone.



10. Make all connections to the back of the radio chassis (REQUIRED: use head unit adapter). Make sure to connect the 4-pin data cable and 3.5mm audio cable to the iDatalink I/F port.



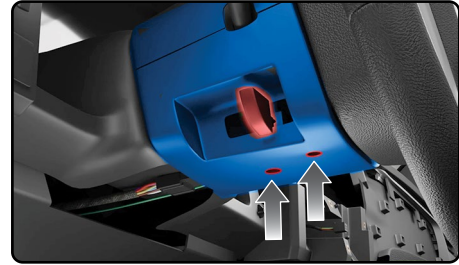
11. Press the radio chassis into the dash cavity and secure it with the two (2) 7mm screws removed earlier.



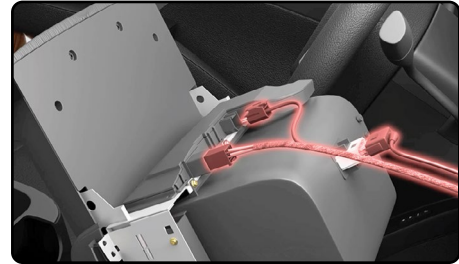
INSTALL AND CONNECT P3 /4

INSTALL TYPE-01

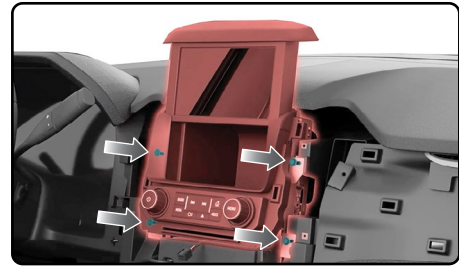
13. Reinstall the steering column panels, screws (if equipped), and adjustment lever.



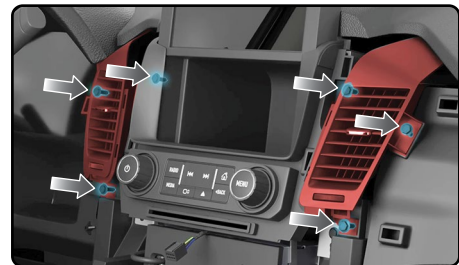
14. Reconnect the wiring harness and USB cable to the back of the display assembly.



15. Press the assembly into the dash and secure it with the four (4) 7mm screws removed earlier.



16. Reinstall the vents and secure them with the six (6) 7mm screws.



17. Reconnect the climate controls and snap the bezel back into the dash. Then, secure it with the two (2) 7mm screws.



18. Reinstall the small dash panel to the left of the radio. If equipped with push to start, connect the wiring harness and secure it with the single (1) 7mm screw.



INSTALL AND CONNECT P4 /4

INSTALL TYPE-01

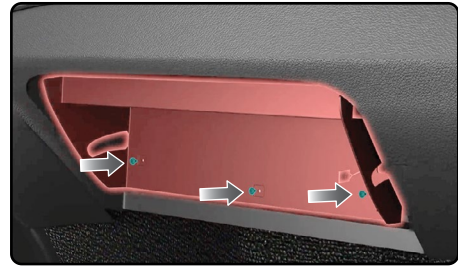
19. Reinstall the passenger side dash panel. Make sure the eight (8) clips snap into place.



20. Reconnect the two (2) wiring harnesses to the center console. Then, snap it back into place.



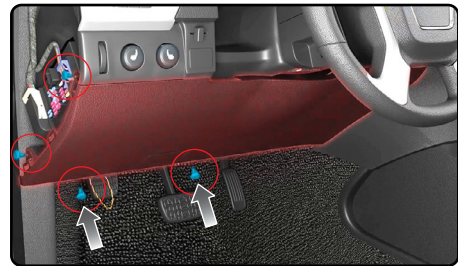
21. Reinstall the glove compartment rear panel and secure it with the three (3) T15 Torx screws. Make sure you pass the hanger through the designated hole in the panel.



22. Reinstall the glove compartment and attach the hanger to the right side.



23. Reinstall the lower driver side panel and secure it with the four (4) T15 Torx screws.



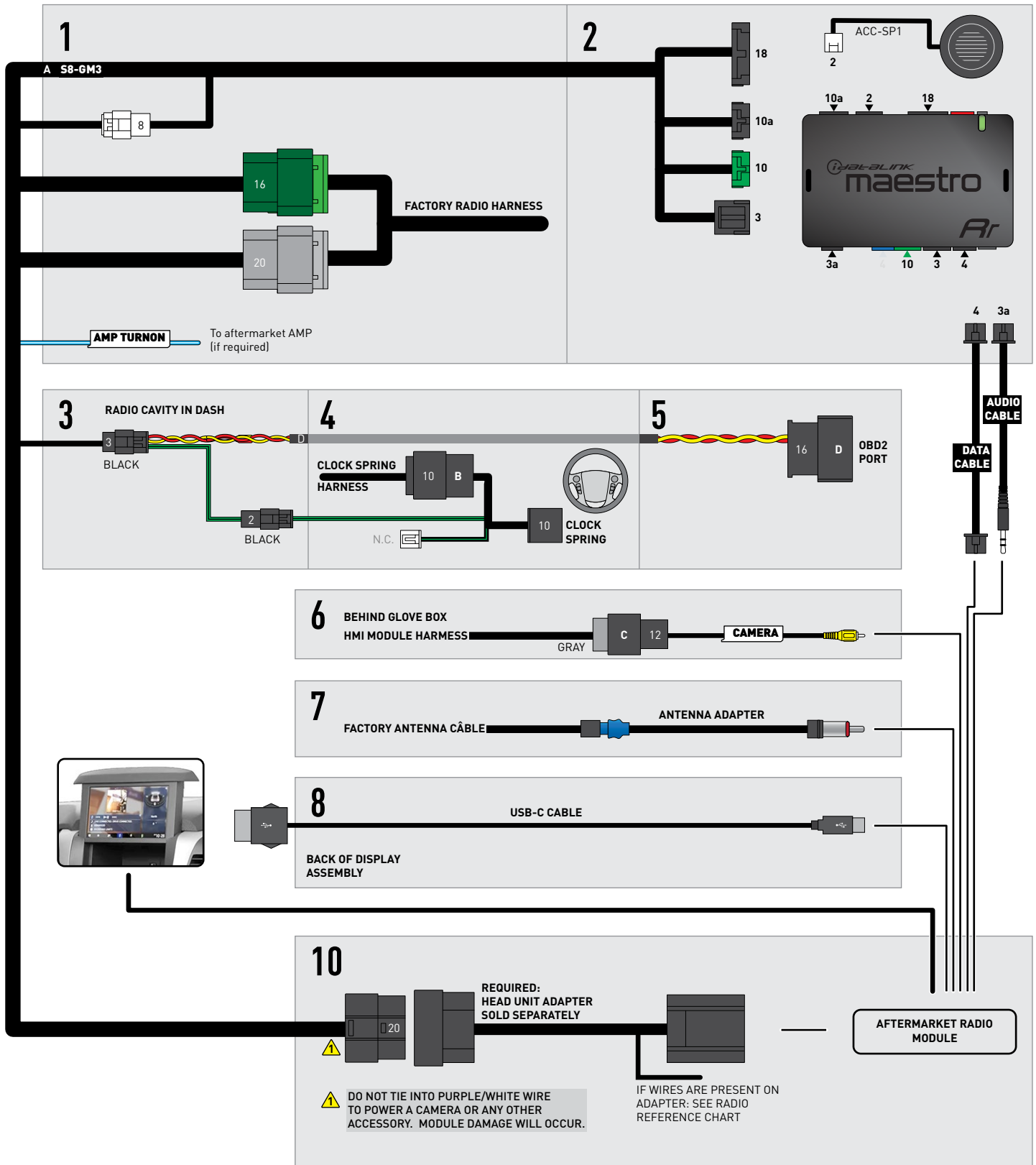
24. Reinstall the fuse box cover panel.



WIRING DIAGRAM

INSTALL TYPE-01

SOME CABLES INCLUDED WITH MAESTRO MODULE ARE NOT USED



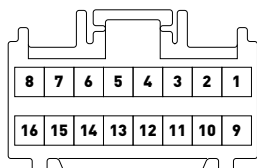
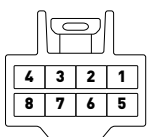
2

VEHICLE WIRE REFERENCE CHART

INSTALL TYPE-01

Wire Description	Connector Name	Connector Color	Connector Type	Position	Wire Color	Polarity	Wire Location
Subwoofer	~	~	8 pin	01	DkBlue/Gray	(+)	Amplifier, left side of cargo area, behind wheel well
Subwoofer	~	~	8 pin	05	Gray/Black	(-)	Amplifier, left side of cargo area, behind wheel well
RF Speaker	~	~	8 pin	02	Yellow	(+)	Amplifier, left side of cargo area, behind wheel well
RF Speaker	~	~	8 pin	06	Yellow/Black	(-)	Amplifier, left side of cargo area, behind wheel well
LF Speaker	~	~	8 pin	03	DkBlue	(+)	Amplifier, left side of cargo area, behind wheel well
LF Speaker	~	~	8 pin	07	Brown/DkBlue	(-)	Amplifier, left side of cargo area, behind wheel well
RF Tweeter (if equipped)	~	~	16 pin	04	Brown/LtGreen	(+)	Amplifier, left side of cargo area, behind wheel well
RF Tweeter (if equipped)	~	~	16 pin	12	Purple/Brown	(-)	Amplifier, left side of cargo area, behind wheel well
LF Tweeter (if equipped)	~	~	16 pin	05	Yellow/DkBlue	(+)	Amplifier, left side of cargo area, behind wheel well
LF Tweeter (if equipped)	~	~	16 pin	13	Yellow/Gray	(-)	Amplifier, left side of cargo area, behind wheel well
RR Speaker	~	~	16 pin	06	White	(+)	Amplifier, left side of cargo area, behind wheel well
RR Speaker	~	~	16 pin	14	DkBlue/Black	(-)	Amplifier, left side of cargo area, behind wheel well
LR Speaker	~	~	16 pin	07	LtGreen	(+)	Amplifier, left side of cargo area, behind wheel well
LR Speaker	~	~	16 pin	15	LtGreen/Black	(-)	Amplifier, left side of cargo area, behind wheel well

AMPLIFIER CONNECTORS (WIRE SIDE)

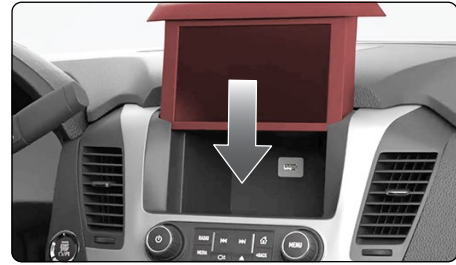


DISASSEMBLY P1/5

INSTALL TYPE-02

NOTE: This installation is quite difficult. Although this guide offers step-by-step instructions, we strongly recommend professional installation.

1. Before you begin, make sure the radio screen is in the lowered position.

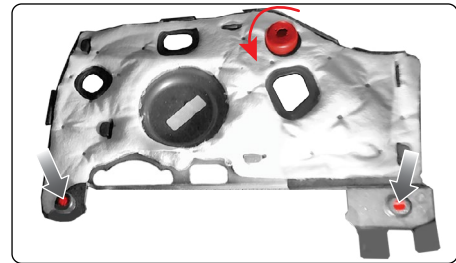


2. Using the supplied panel tool, remove the dash end panels (driver and passenger side).



3. Remove the (2) 7mm screws securing the panel under the glove box. Remove the trim panel.

From the interior side, turn the light counterclockwise to remove.



4. Using the panel tool, unclip the trim along the top of the left air vent and along the right side of the radio. Disconnect and remove.



5. Remove the left air vent and switch panel by pulling toward rear of the vehicle. Unplug the electrical connections and remove the panel.

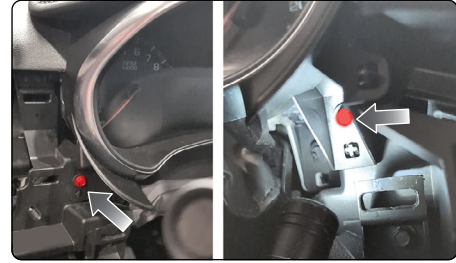


DISASSEMBLY P2/5

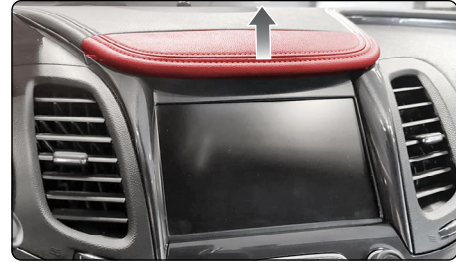
INSTALL TYPE-02

6. Remove the two (2) 7mm screws securing the instrument cluster trim (on the lower left, and lower right of cluster trim).

Pull the chrome instrument cluster trim toward rear of vehicle to release the three top clips. Remove the trim panel.



7. Unclip and remove the top screen trim by lifting toward the windshield.



8. Remove the trim above / behind the radio screen by pulling toward the rear.

Remove the two (2) 7mm screws exposed once trim is removed.



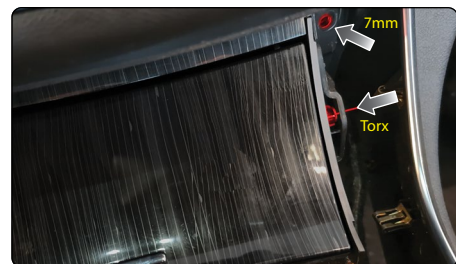
9. Pull out on the sides of the console, at the front dash pocket area. Remove the two (2) 7mm screws at the base of the dash.

Remove the two (2) Torx T15 screws (one from each side of the pocket).



10. Using the panel tool, unclip the shifter/cupholder trim panel. Remove the panel.

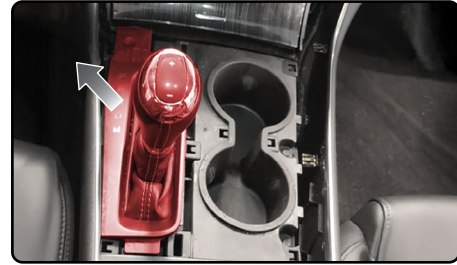
Make sure the sides of the console are pulled out far enough to clear the tabs at the back of the shifter trim.



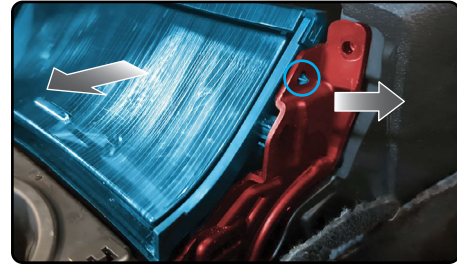
DISASSEMBLY P3 /5

INSTALL TYPE-02

11. Unplug the shifter electrical connection, then pull UP to remove the shift knob/base trim.



12. Pull outward on the black plastic (drawn in red) slightly to free the pocket. Pull far enough to clear the alignment peg (in the blue circle) and pull toward the rear of vehicle to free the pocket from the dash.



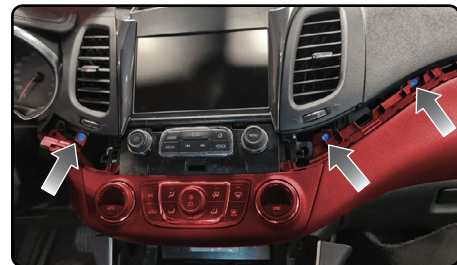
Unplug the electrical connector and remove the pocket.

13. Remove the 7mm screw from the pocket cavity, under the dash.



14. Remove one 7mm screw on left of climate control trim, and two (2) 7mm screws from the right side.

Pull the panel to release it, unplug the climate control electrical connector, and remove the panel.



15. Remove the two (2) 7mm screws securing the center air vents and remove both air vents by pulling toward rear of vehicle.



16. Remove the four (4) 7mm screws holding the radio screen assembly in place.

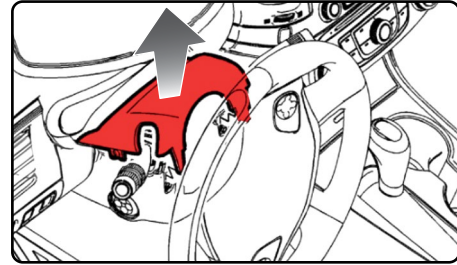
Pull out of dash, hit the screen up button to raise the screen, and unplug the radio with the screen UP.



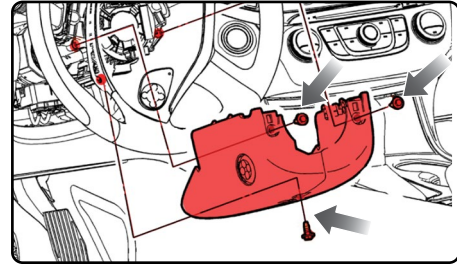
DISASSEMBLY P4/5

INSTALL TYPE-02

- 17.** Pop up the top steering wheel trim panel.

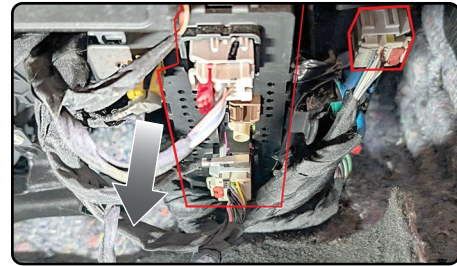


- 18.** Remove the three (3) screws and remove the lower steering column trim.



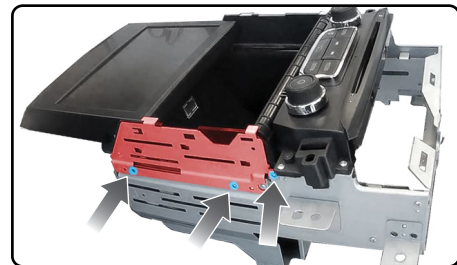
- 19.** Under the passenger glove box area, remove the radio tuner and the gray 12-pin plug from the HMI, to the right.

Unplug all radio electrical connectors and antennas, then depress the three clips to release the tuner from the mount and lower it down to remove.



- 20.** SCREEN DISASSEMBLY:

Remove the three (3) Phillips screws from each side of the radio screen. Remove the brackets.

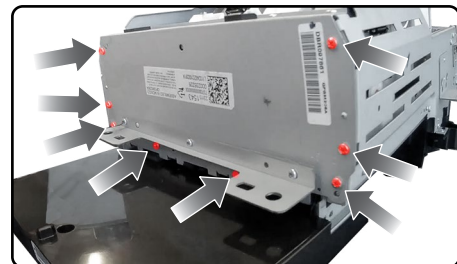


- 21.** Remove the four (4) Phillips screws at the rear of radio assembly.



- 22.** Remove the eight (8) Phillips screws from the top of the radio assembly.

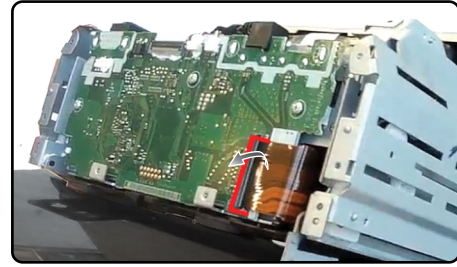
Remove the metal cover panel.



DISASSEMBLY P5/5

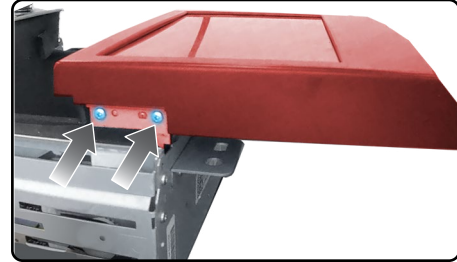
INSTALL TYPE-02

- 23.** With the cover panel removed, lift/rotate the retaining clip securing the ribbon cable in place and remove the ribbon cable from the board.



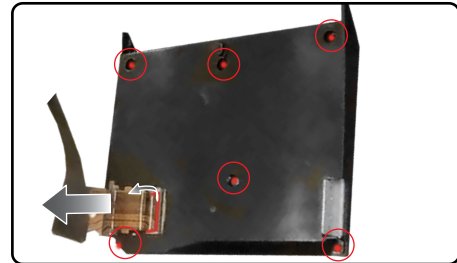
- 24.** Remove the four (4) Phillips screws holding the screen to the metal brackets (2 on each side).

Separate and remove the screen from the chassis. Set chassis aside for reassembly later.



- 25.** Remove the ribbon cable from the screen by lifting the latch and sliding it out.

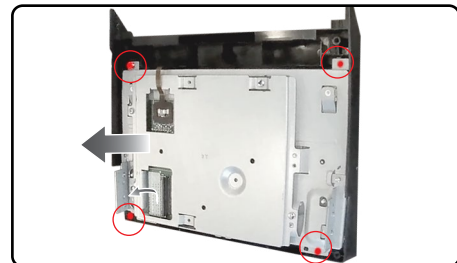
Remove the six (6) Phillips screws from the rear of the screen backing plate. Remove the backing plate.



- 26.** Remove the four (4) Phillips screws securing the screen in place.

Lift and remove the screen from the front trim.

Note the orientation of the trim, the angled edges at the top are the top of the OEM screen bezel.



RADIO ASSEMBLY P1 /2

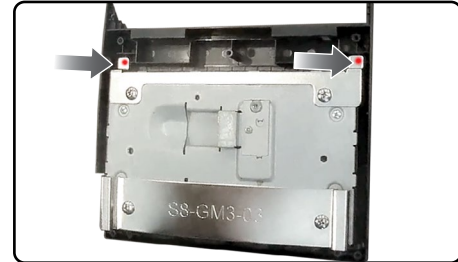
INSTALL TYPE-02

1. Place the S8-GM3-03 bracket on bottom back of the new radio screen. Place S8-GM3-04 on the top back of the new radio screen.
Secure with four (4) of the provided SM5-6P screws.



2. Secure the new radio screen on the trim, using two (2) Phillips screws removed from the factory screen.

NOTE: **DO NOT overtighten** the screws, just snug to the bezel. If screws are over-tightened, the screw will strip or the radio screen will be damaged.



3. Trim the factory screen backing plate as shown, to clear the S8-GM3-03 bracket.

The circled area needs to be trimmed from inside to be flush with the back for clearance.



4. Route the screen cables through the opening shown at the left.
Reinstall the six (6) black Phillips screws removed from the screen assembly.

NOTE: **DO NOT overtighten** the screws, just snug to the bezel. If screws are over-tightened, the screw will strip or the radio screen will be damaged.



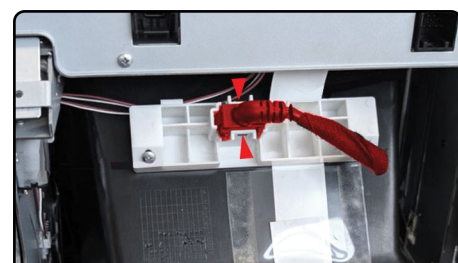
5. Reinstall the screen on to the sliding assembly of the chassis using the four provided SM3-5P screws.

Use caution not to cross-thread these four screws.



6. Release the factory USB port from the rear of assembly, by prying outward on the two clips securing it in place. Replace factory port with the included USB C to USB C cable.

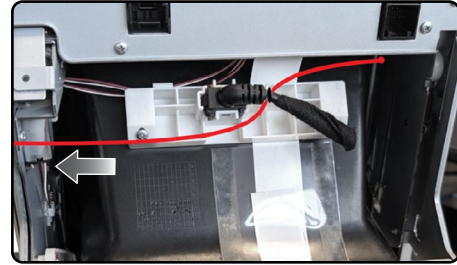
DO NOT USE USB-A CABLE, it will not function properly



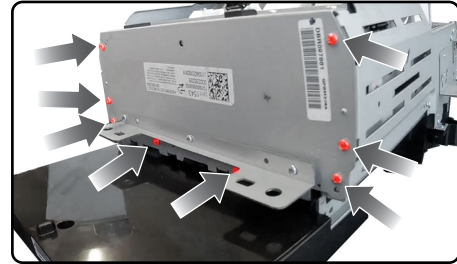
RADIO ASSEMBLY P2/2

INSTALL TYPE-02

7. Route the screen cables through the right side (looking from the rear of the assembly) and secure as shown on the USB cable.

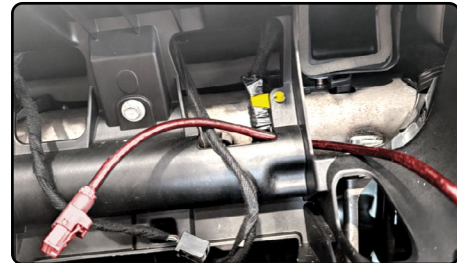


8. Place the metal cover panel on the top of the radio assembly. Secure it with the eight (8) Phillips screws removed earlier.



9. Route the screen extension cables (Kenwood KCA-A150EX or JVC KS-UA50) from the radio screen cavity to the passenger kick panel.

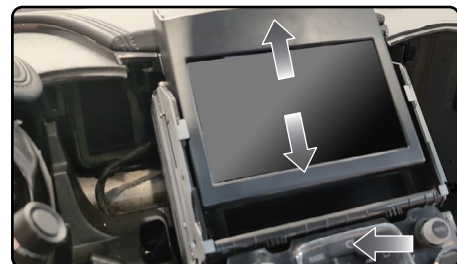
Wire should be routed as shown, under the dash bracing.



10. Reinstall the radio screen assembly. Secure it with the four (4) 7mm screws removed earlier.

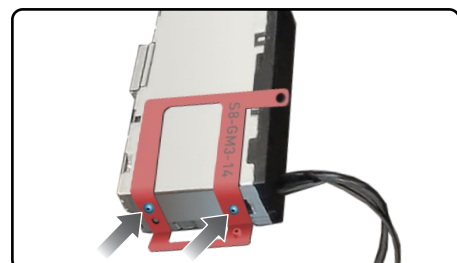


11. Test the raise/lower function to ensure no binding of the screen cable.



12. Mount the radio chassis to S8-GM3-14 bracket. Orient bracket as shown (with radio chassis mounted vertically, with display cable facing the side of the bracket with the part number stamped in it).

Secure the chassis using two (2) of the provided SM5-6P screws.

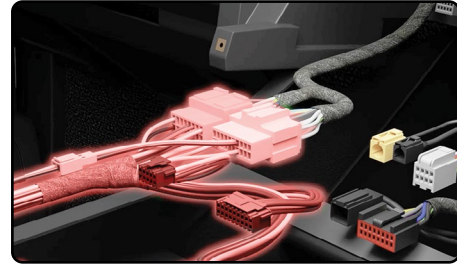


INSTALL AND CONNECT P1 /3

INSTALL TYPE-02

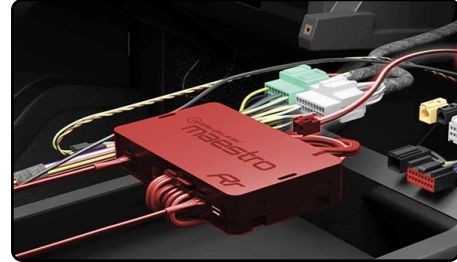
NOTE – if vehicle is equipped with BOSE, amp must be bypassed but remain connected to power, ground, and MOST data network. See vehicle wire reference pages after diagram for amp output wiring information.

1. Connect the S8-GM3 T-Harness to the main factory wiring harness (passenger floor/BCM area).



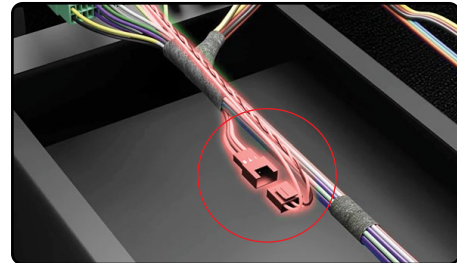
2. Connect the Maestro RR to the GM3 T-harness. Then, connect the 4-pin data cable and 3.5mm audio cable to the Maestro module (the 4-pin data cable and 3.5mm audio cable are provided with the Maestro module).

Connect the supplied chime speaker to the Maestro.



3. Unplug the 2-pin black connector from OBD2 harness (D) and connect it to the 2-pin white connector of steering wheel harness (B).

Connect the OBD2 black 3-pin plug to the main GM3 T-harness.

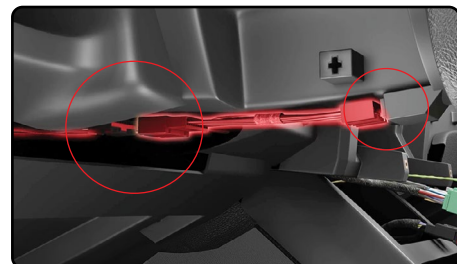


4. Route the OBD2 and steering wheel control harness through the dash to the steering column and OBD2 port.

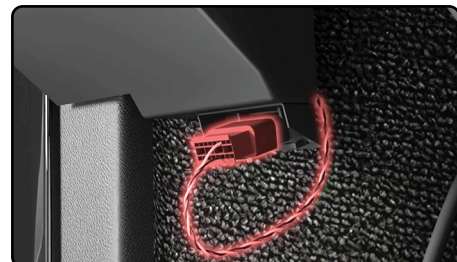
Secure the wiring



Disconnect the wiring harness from the clock spring assembly. Connect the SWC T-harness (B) to the clock spring assembly and the vehicle harness into the T-harness (B).



5. Connect the OBD2 plug to the OBD2 port.

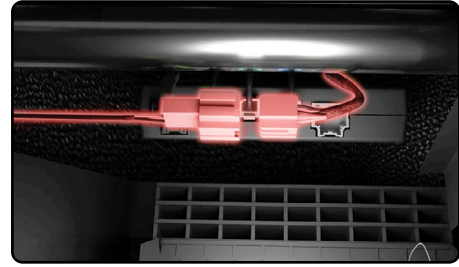


INSTALL AND CONNECT P2 /3

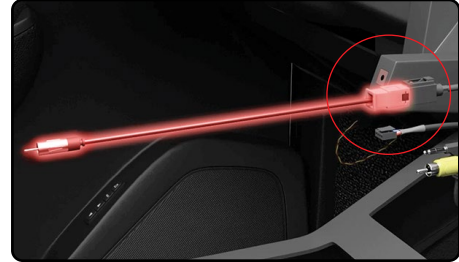
INSTALL TYPE-02

6. Connect the C-S8-GM3 camera harness to the gray 12-pin plug disconnected from the HMI module (located under the glove compartment).

Tie up the excess cable



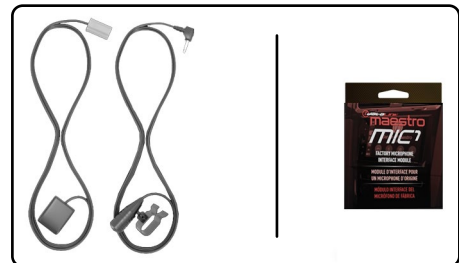
7. Connect the supplied antenna adapter to the black antenna connection.



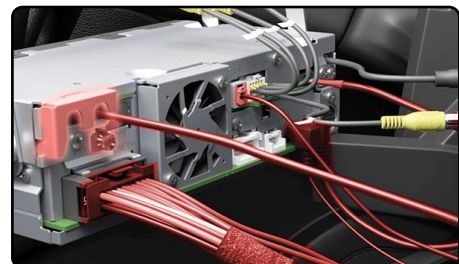
8. Route the USB cable supplied with the APX-S8-GM3, from the radio screen assembly to the glove box cavity.

NOTE – DO NOT use the included USB-A cable, it will not work.

9. You will need to install the GPS antenna and Bluetooth microphone to the recommended location by the radio manufacturer. Use the optional ADS-MIC1 to retain the factory microphone.

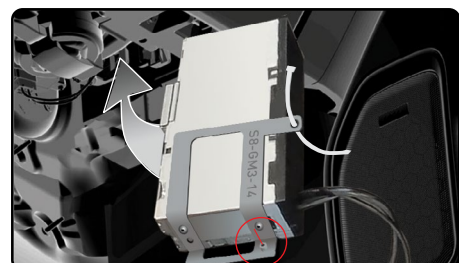


10. Make all connections to the back of the radio chassis (REQUIRED: use head unit adapter). Make sure to connect the 4-pin data cable and 3.5mm audio cable to the iDatalink I/F port.



11. Press the S8-GM3-14 bracket and radio chassis into the factory radio tuner location. Secure it with one SM5-8P screw and zip tie the larger hole into the factory bracket on the left side.

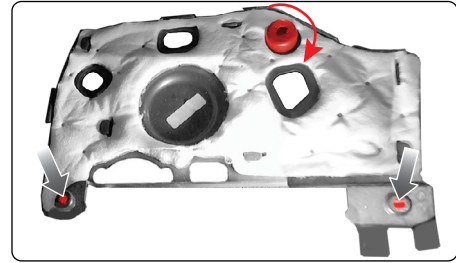
Press the S8-GM3 T-Harness, Maestro RR and chime speaker into the lower dash cavity. Secure everything in place.



INSTALL AND CONNECT P3 /3

INSTALL TYPE-02

12. Reinstall the light into the lower glove box trim panel and secure the panel in place with the two (2) 7mm factory screws.

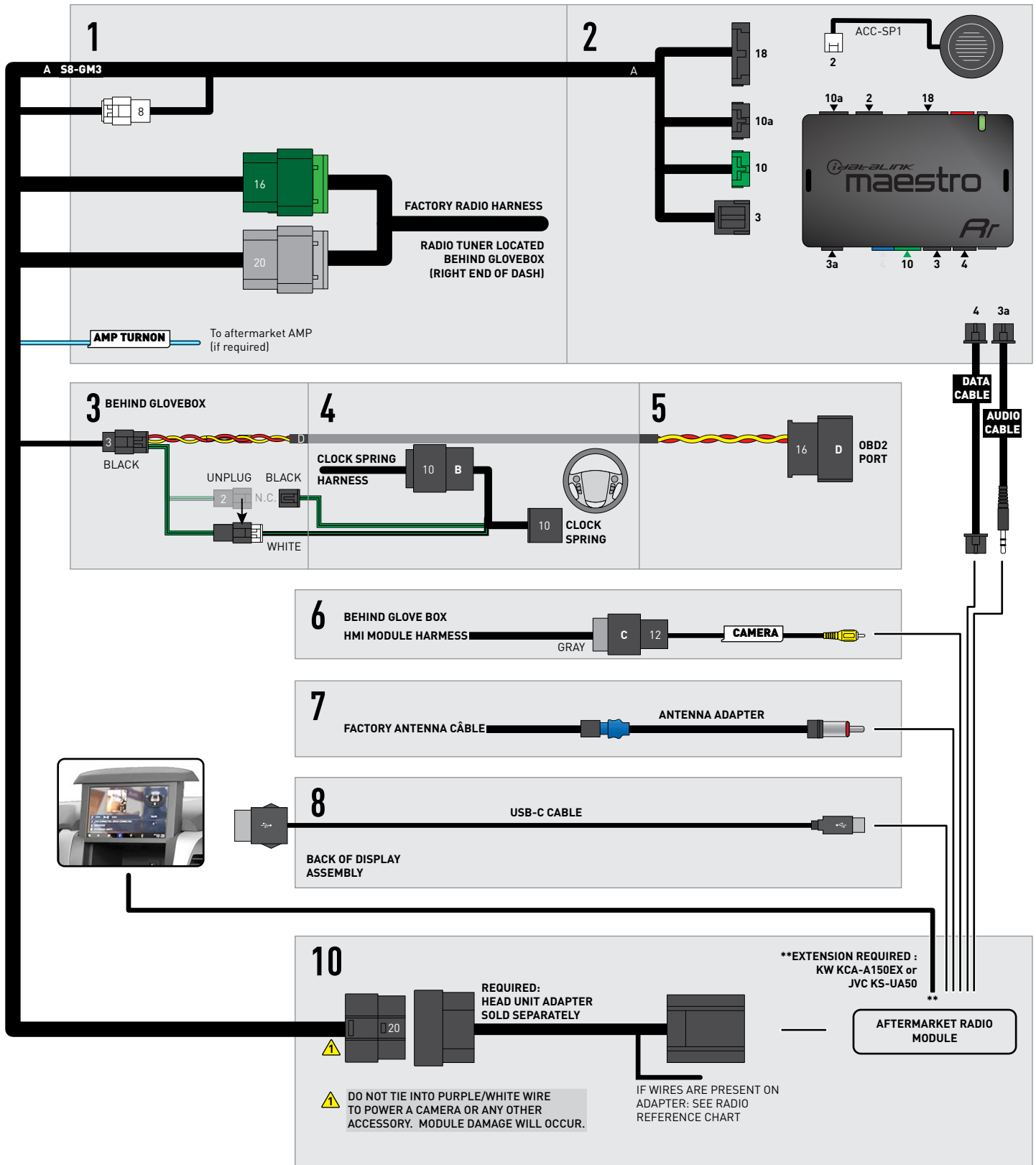


13. Put everything that was disassembled back into place, using reverse order of the removal steps.

WIRING DIAGRAM

INSTALL TYPE-02

SOME CABLES INCLUDED WITH MAESTRO MODULE ARE NOT USED

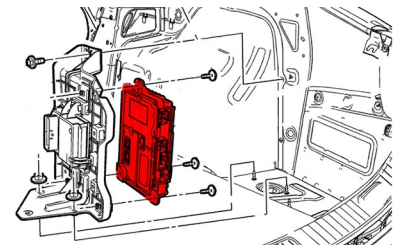
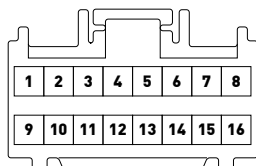
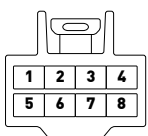


VEHICLE WIRE REFERENCE CHART

INSTALL TYPE-02

Wire Description	Connector Name	Connector Color	Connector Type	Position	Wire Color	Polarity	Wire Location
RF Speaker	~	LtGray or Black (UQS)	8 pin	02	Yellow	(+)	RR quarter panel/in trunk
RF Speaker	~	LtGray or Black (UQS)	8 pin	06	Yellow/Black	(-)	RR quarter panel/in trunk
LF Speaker	~	LtGray or Black (UQS)	8 pin	03	DkBlue	(+)	RR quarter panel/in trunk
LF Speaker	~	LtGray or Black (UQS)	8 pin	07	Brown/DkBlue	(-)	RR quarter panel/in trunk
LR SUB Speaker (UQS)	~	Black (UQS)	8 pin	01	DkBlue/Gray	(+)	RR quarter panel/in trunk
LR SUB Speaker (UQS)	~	Black (UQS)	8 pin	05	LtGreen/Black	(-)	RR quarter panel/in trunk
LF Tweeter Speaker	~	Green	16 pin	05	Yellow/DkBlue	(+)	RR quarter panel/in trunk
LF Tweeter Speaker	~	Green	16 pin	13	Yellow/Gray	(-)	RR quarter panel/in trunk
LR Speaker	~	Green	16 pin	07	LtGreen	(+)	RR quarter panel/in trunk
LR Speaker	~	Green	16 pin	15	LtGreen/Black	(-)	RR quarter panel/in trunk
RF Tweeter Speaker	~	Green	16 pin	04	Brown/LtGreen	(+)	RR quarter panel/in trunk
RF Tweeter Speaker	~	Green	16 pin	12	Violet/Brown	(-)	RR quarter panel/in trunk
RR Speaker	~	Green	16 pin	06	White	(+)	RR quarter panel/in trunk
RR Speaker	~	Green	16 pin	14	DkBlue/Black	(-)	RR quarter panel/in trunk
Front Center Speaker (UQS)	~	Green	16 pin	03	Yellow/White	(+)	RR quarter panel/in trunk
Front Center Speaker (UQS)	~	Green	16 pin	11	DkBlue/Yellow	(-)	RR quarter panel/in trunk
LR Midrange Speaker (UQS)	~	Green	16 pin	02	Yellow/Brown	(+)	RR quarter panel/in trunk
LR Midrange Speaker (UQS)	~	Green	16 pin	10	White/Black	(-)	RR quarter panel/in trunk
Right SUB Speaker (UQS)	~	Green	16 pin	16	LtGreen/Violet	(+)	RR quarter panel/in trunk
Right SUB Speaker (UQS)	~	Green	16 pin	08	Gray/Black	(-)	RR quarter panel/in trunk

AMPLIFIER CONNECTORS (WIRE SIDE)



DISASSEMBLY P1/6

INSTALL TYPE-03

NOTE: This installation is quite difficult. Although this guide offers step-by-step instructions, we strongly recommend professional installation.

1. Before you begin, set parking brake and place vehicle in neutral. Ensure radio screen is up, not lowered.

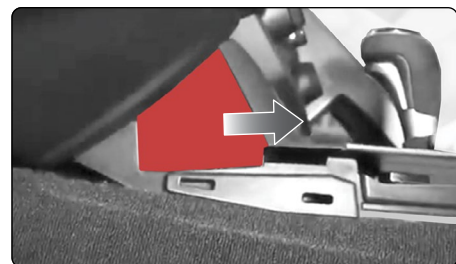
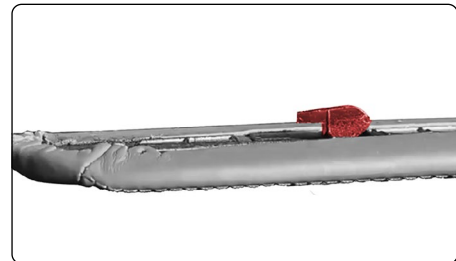
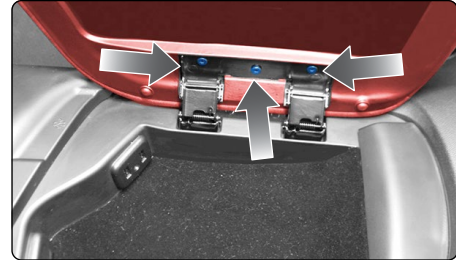
2. Open the center console, remove the three (3) T-15 Torx screws from the hinge. Remove the console lid.

3. Remove the driver's side console trim. Using a plastic panel tool, pop the clips out, then slide to rear to remove.

Note: at the front of the panel around 6" back is a tab. DO NOT pry out on this area or the tab will break off.

4. Remove side console trim panel by pulling out from the console.

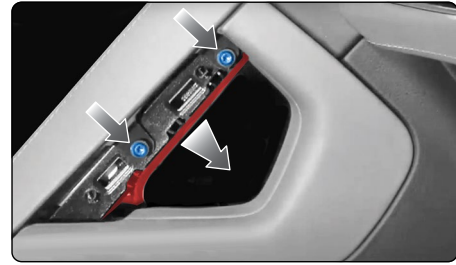
5. Remove the passenger side handle from the console.



DISASSEMBLY P2/6

INSTALL TYPE-03

6. Remove the two (2) T-20 Torx screws and remove the driver's side of the handle.



7. Using a plastic panel removal tool, remove the top of the console. Pull rearward once the clips are released, then unplug the connectors and push the shifter boot clips up from under the console to release the shifter boot.

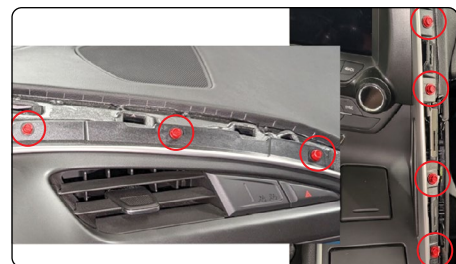
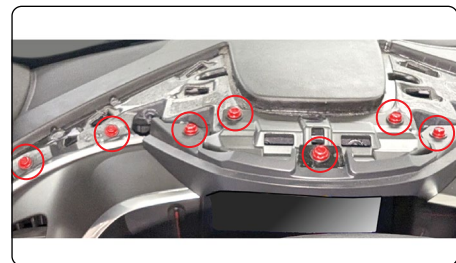
Pass the boot through the trim, then remove the panel.



8. Using a plastic panel removal tool, remove the dash trim starting along the right side of the console.



9. Remove the fourteen (14) 10mm bolts from the trim panel.



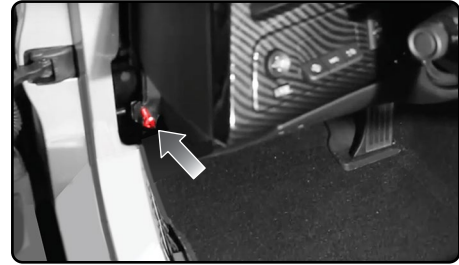
10. Pop up the driver's side floor trim panel and pull toward rear to remove.



DISASSEMBLY P3/6

INSTALL TYPE-03

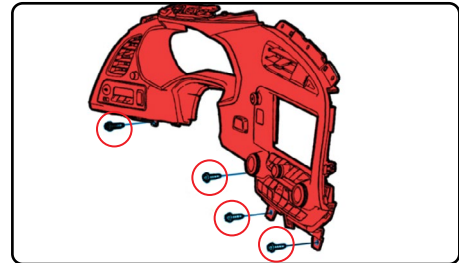
11. Remove the screw on the left side of the dash.



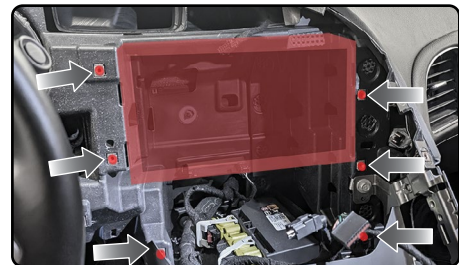
12. Remove the two (2) 7mm screws from under the dash.
Pop the panel free and disconnect the electrical connectors.
Remove the panel.



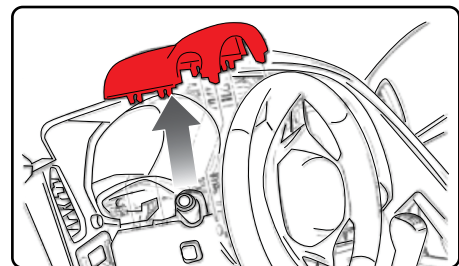
13. Remove the four (4) 7mm screws from the radio trim panel.
Pull the dash panel to release the clips. Disconnect the electrical connectors and remove the panel.



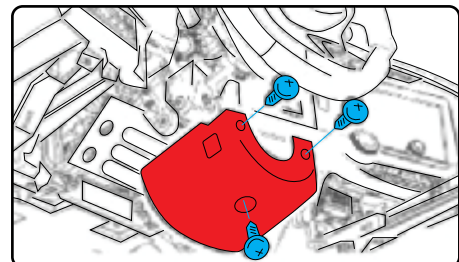
14. Remove the six (6) 7mm screws holding radio assembly into the dash, then unplug and remove the radio assembly.



15. Telescope the steering wheel fully rearward and down, then remove the top steering column trim panel.



16. Remove the three screws from the lower steering column trim.
Turn the wheel left or right to access each of the front screws.

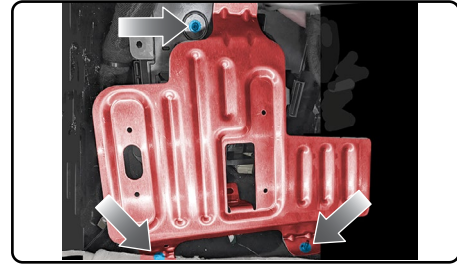


DISASSEMBLY P4/6

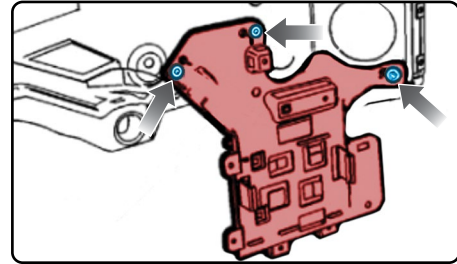
INSTALL TYPE-03

- 17.** Pop up the passenger's side floor trim panel and pull toward rear to remove. Pull carpet back from the kick area toward the center of car to expose the BCM bracket.

Remove the three (3) nuts securing the BCM bracket in place and remove the metal bracket.

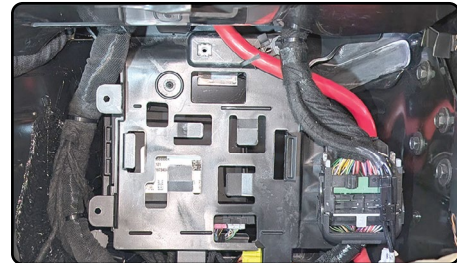


- 18.** Remove the (3) nuts securing the black BCM bracket in place only if unable to reach behind bracket for the next step.



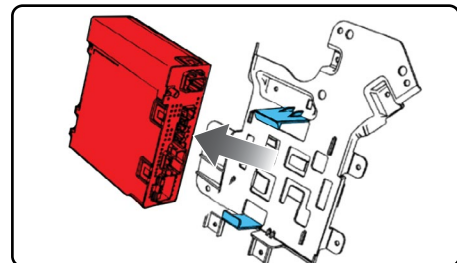
- 19.** Unclip the top of the factory radio tuner from the rear of the black bracket behind the BCM.

Lift and remove tuner, the electrical connectors, and antennas.

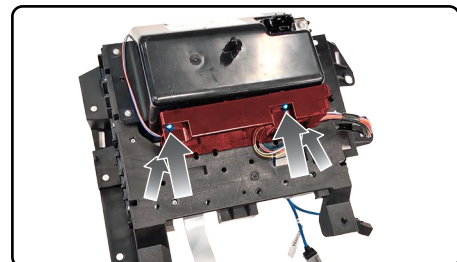
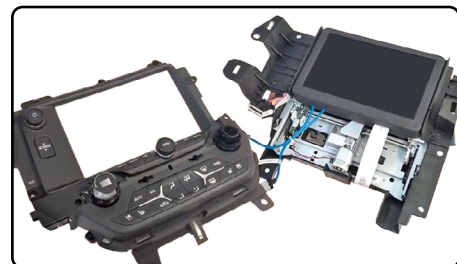


- 20.** SCREEN DISASSEMBLY:

Separate the climate and screen modules and unplug the connector on the climate controls.



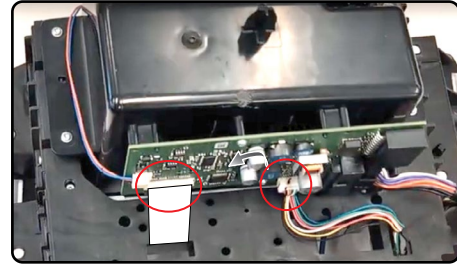
- 21.** Remove four (4) T7 Torx screws from the cover panel and remove the panel.



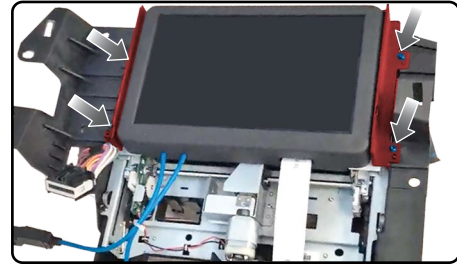
DISASSEMBLY P5/6

INSTALL TYPE-03

- 22.** Unplug the white connector in the middle/bottom of the board. Remove the ribbon cable from the screen by lifting the latch and sliding it out.

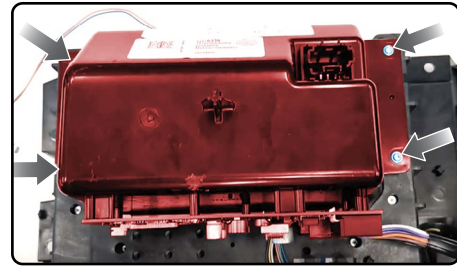


- 23.** Remove the four (4) T7 screws holding the screen trim panel in and remove the panel.



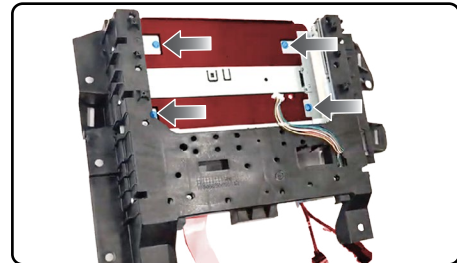
- 24.** Remove the four (4) T10 screws from the pocket, behind the screen.

Remove the pocket by lifting and moving up and away from the assembly.

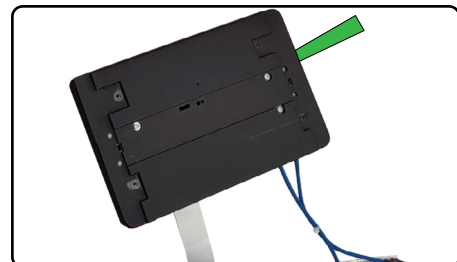
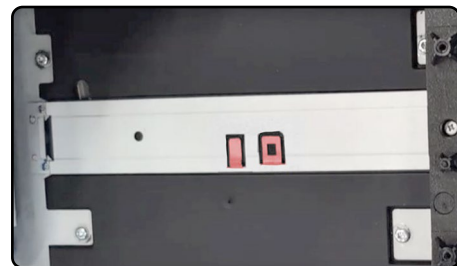


- 25.** Remove the four (4) T10 screws from the radio screen assembly, remove the screen assembly.

Bend the two tabs as shown.



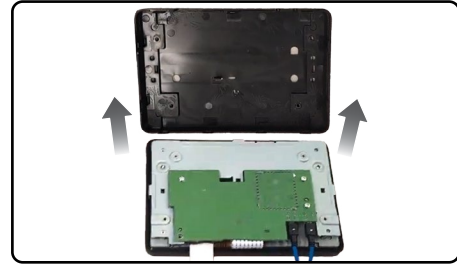
- 26.** Separate the rear panel off the radio screen assembly using a plastic panel tool.



DISASSEMBLY P6/6

INSTALL TYPE-03

27. Remove and set the screen assembly aside.



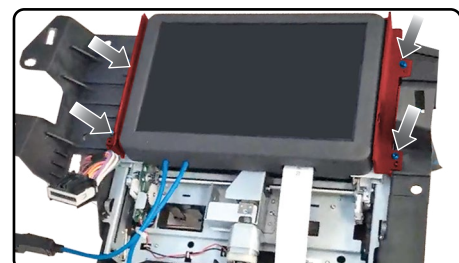
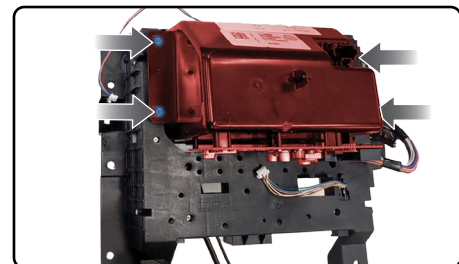
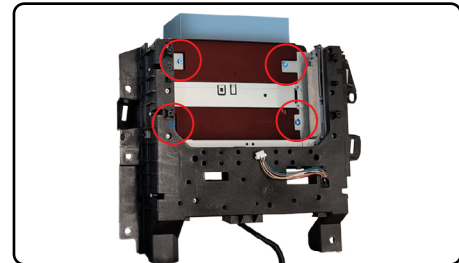
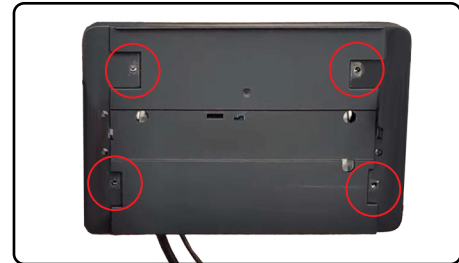
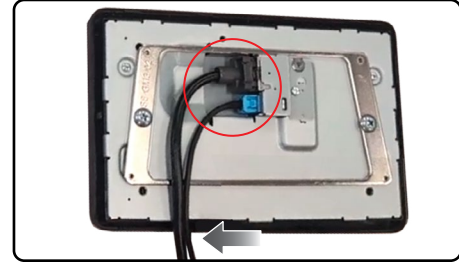
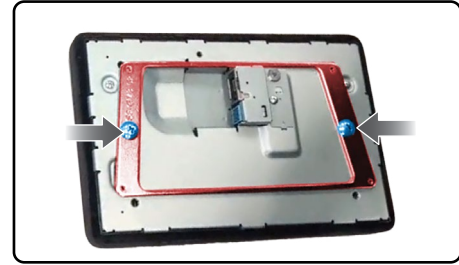
27. Cut the tab off the lower left of the back plastic bezel.



RADIO ASSEMBLY P1 / 2

INSTALL TYPE-03

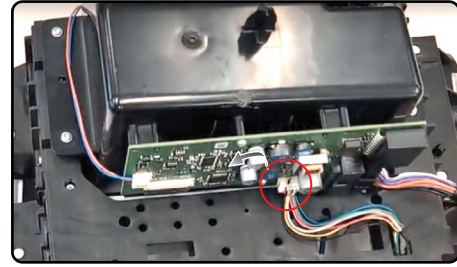
1. Install the new screen, ensuring proper orientation
Place the metal bracket labeled S8-GM3-02 on the screen as shown and secure using two (2) of the SM5-6P x10 screws.
2. Connect the screen extension cables to the radio.
3. Reinstall the rear trim panel, making sure the cables are routed through the new opening.
Ensure the four bracket screw holes are aligned with the rear trim panel holes.
4. Reinstall the metal bracket assembly using the four (4) factory T10 screws.
NOTE: Placing something under the screen assembly to elevate it may help align the screw holes.
5. Slide the pocket back in, securing with the four (4) factory screws.
6. Reinstall the screen trim panel using the four (4) T7 factory screws.



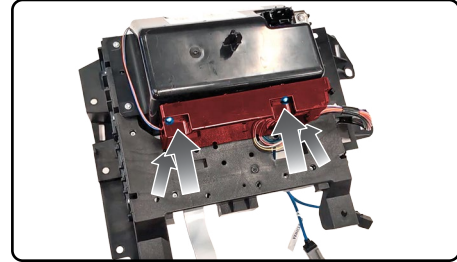
RADIO ASSEMBLY P2/2

INSTALL TYPE-03

7. Reconnect the white plug on the circuit board.

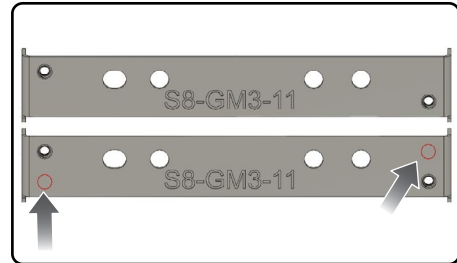


8. Reinstall the cover panel using the four (4) T7 screws.
Reassemble the climate and screen modules and plug the connector on the climate controls.



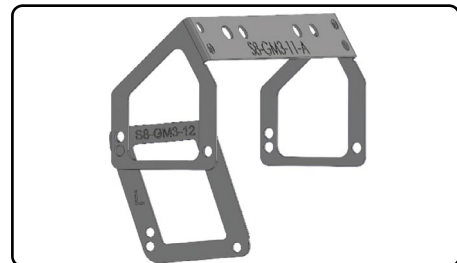
9. RADIO CHASSIS ASSEMBLY:

If bracket is drilled/threaded as shown in the top image, holes will need to be drilled as shown in red on the bottom image and M5 nuts (not provided) or different nuts/bolts will need to be used to secure bracket in the next step.

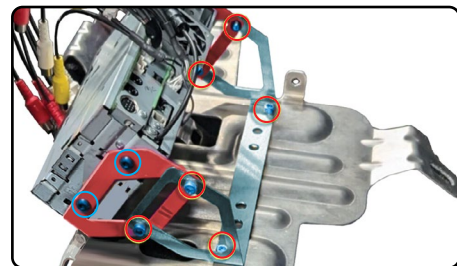


10. Install the S8-GM3-11 bracket on the metal BCM cover panel using two (2) of the provided SM5-8Px8 screws.

Use the remaining four screws to mount the side brackets (S8-GM3-12 & 13) to the inside of the bracket (GM3-12 is the LEFT, GM3-13 is the RIGHT bracket).



Finally, secure the radio chassis to the brackets using four (4) SM5-6p screws (blue circles).



INSTALL AND CONNECT P1 /3

INSTALL TYPE-03

NOTE – if vehicle is equipped with BOSE, amp must be bypassed but remain connected to power, ground, and MOST data network. See vehicle wire reference pages after diagram for amp output wiring information. Does not retain PERFORMANCE DATA RECORDER.

1. Connect the S8-GM3 T-Harness to the main factory wiring harness (passenger floor/BCM area).

2. Connect the Maestro RR to the GM3 T-harness. Then, connect the 4-pin data cable and 3.5mm audio cable to the Maestro module (the 4-pin data cable and 3.5mm audio cable are provided with the Maestro module).

Connect the supplied chime speaker to the Maestro.

3. Unplug the 2-pin black connector from OBD2 harness (D) and connect it to the 2-pin white connector of steering wheel harness (B).

Connect the OBD2 black 3-pin plug to the main GM3 T-harness.

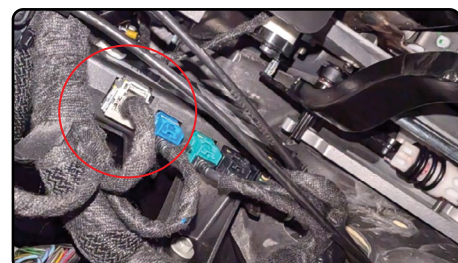
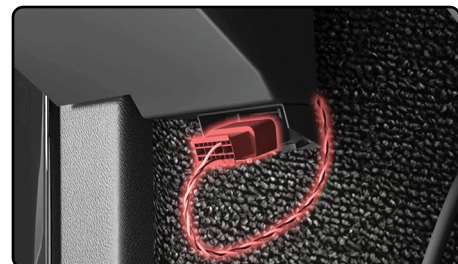
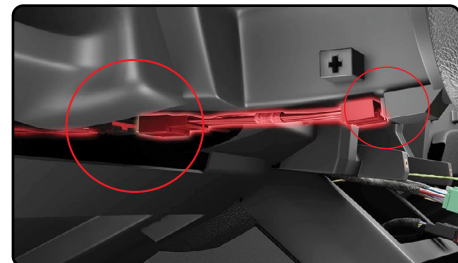
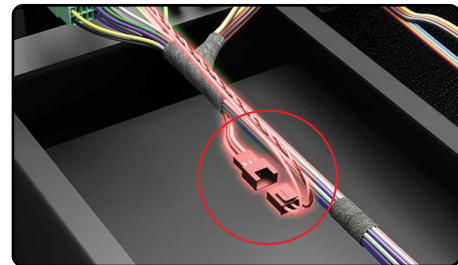
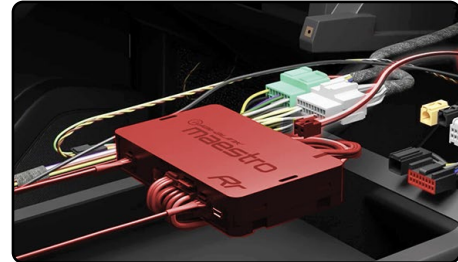
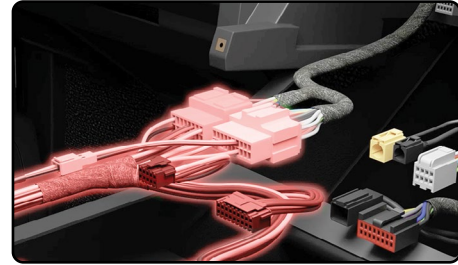
4. Route the OBD2 and steering wheel control harness through the dash to the steering column and OBD2 port. Secure the wiring

Disconnect the wiring harness from the clock spring assembly. Connect the SWC T-harness (B) to the clock spring assembly and the vehicle harness into the T-harness (B).

5. Connect the OBD2 plug to the OBD2 port.

6. Disconnect the gray 12-pin plug at the HMI module, under left front dash. Connect the C-S8-GM3 harness to the gray harness disconnected from the HMI module.

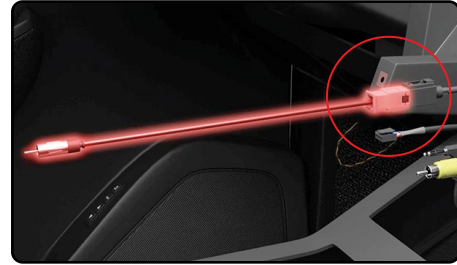
Route the RCA to the passenger floor/BCM area and secure the wiring.



INSTALL AND CONNECT P2 /3

INSTALL TYPE-03

6. Connect the supplied antenna adapter to the black antenna connection.

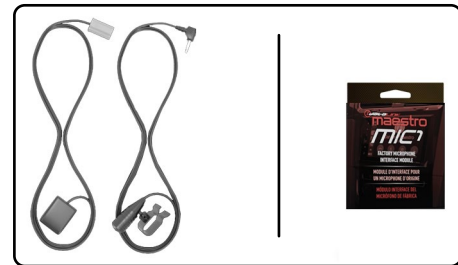


7. Route the USB-C cable provided to the center console, from the passenger kick area and remove the factory cables.

Install the cable provided into one of the factory locations (center console).

NOTE: DO NOT use the included USB-A cable, it will not work.

8. You will need to install the GPS antenna and Bluetooth microphone to the recommended location by the radio manufacturer. Use the optional ADS-MIC1 to retain the factory microphone.

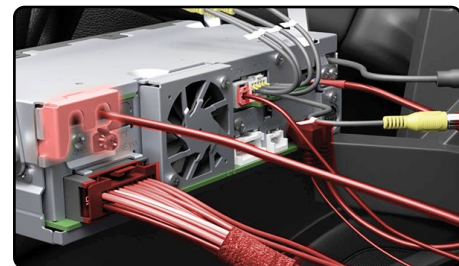


9. Install the radio screen/climate assembly and secure with the six (6) 7mm screws removed earlier.

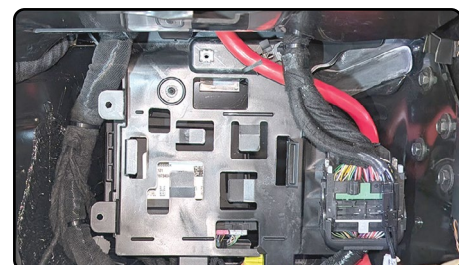
Route the screen extension cables to the passenger floor/BCM area

10. Make all connections to the back of the radio chassis (REQUIRED: use head unit adapter). Make sure to connect the 4-pin data cable and 3.5mm audio cable to the iDatalink I/F port.

Press the S8-GM3 T-Harness, Maestro RR and chime speaker into the lower dash cavity. Secure everything in place.



11. Reinstall factory BCM bracket (black) using the three nuts removed earlier.

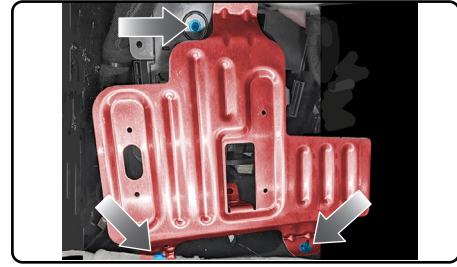


INSTALL AND CONNECT P3 /3

- 6.** NOTE: If vehicle is equipped with the performance data recorder (not retained), it will need to be relocated off the metal bracket and secured elsewhere in the kick area.

Place the radio module assembly (on the metal brackets) and secure with the three (3) nuts removed earlier.

INSTALL TYPE-03

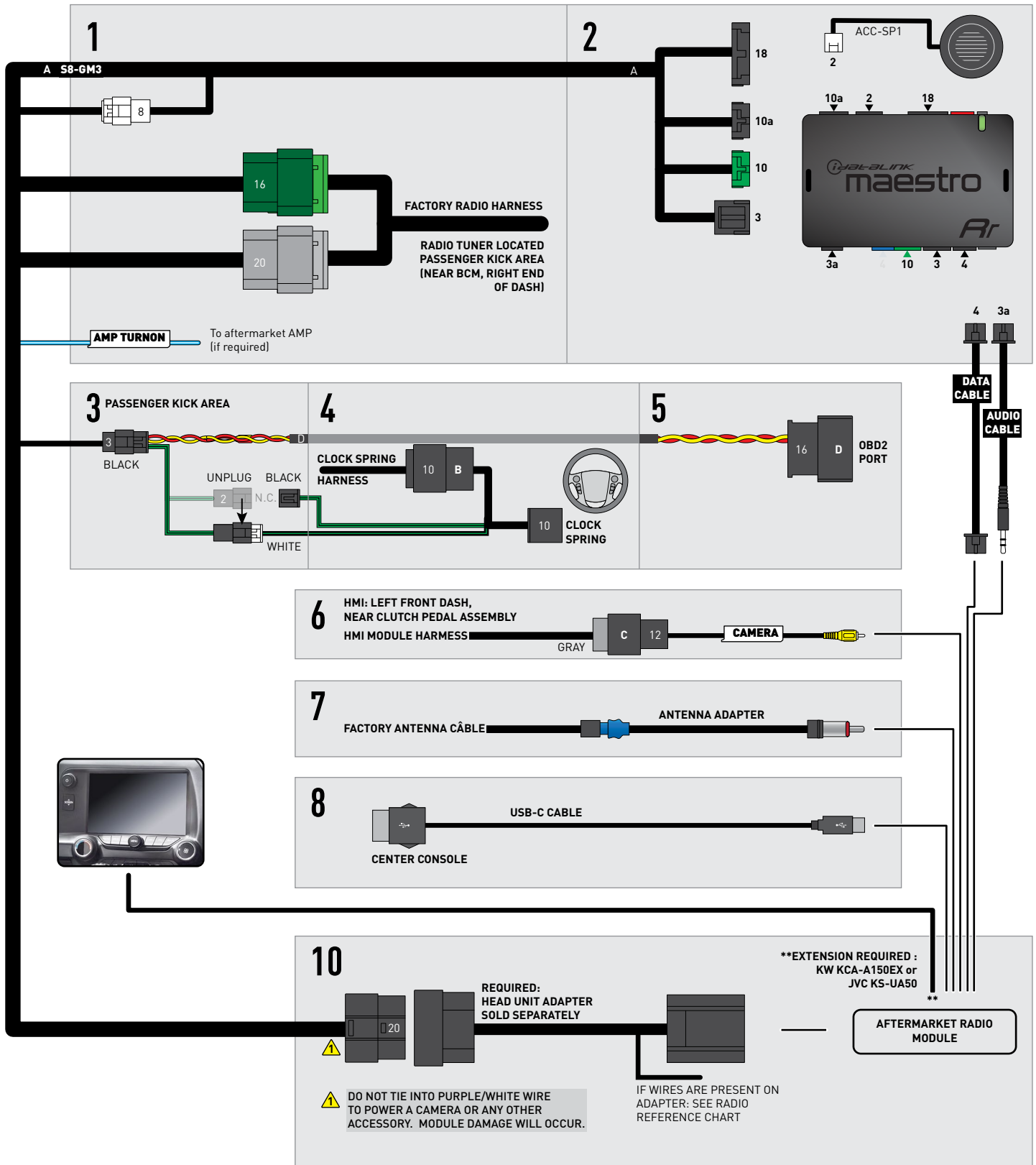


- 7.** Put everything that was disassembled back into place, using reverse order of the removal steps.

WIRING DIAGRAM

INSTALL TYPE-03

SOME CABLES INCLUDED WITH MAESTRO MODULE ARE NOT USED

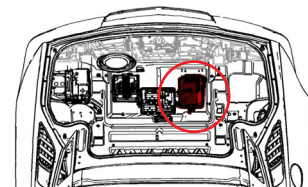
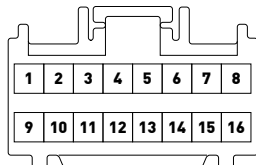
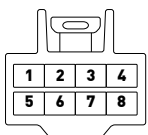


VEHICLE WIRE REFERENCE CHART

INSTALL TYPE-03

Wire Description	Connector Name	Connector Color	Connector Type	Position	Wire Color	Polarity	Wire Location
RF Speaker	~	Black	8 pin	01	Yellow	(+)	Amplifier, middle/left of trunk
RF Speaker	~	Black	8 pin	05	Yellow/Black	(-)	Amplifier, middle/left of trunk
LF Speaker	~	Black	8 pin	03	LtBlue	(+)	Amplifier, middle/left of trunk
LF Speaker	~	Black	8 pin	07	Brown/LtBlue	(-)	Amplifier, middle/left of trunk
LR Shelf Speaker	~	Green	16 pin	05	LtBlue/Brown	(+)	Amplifier, middle/left of trunk
LR Shelf Speaker	~	Green	16 pin	13	Violet/Black	(-)	Amplifier, middle/left of trunk
RR Shelf Speaker	~	Green	16 pin	04	Brown/Black	(+)	Amplifier, middle/left of trunk
RR Shelf Speaker	~	Green	16 pin	12	LtBlue/Black	(-)	Amplifier, middle/left of trunk
Front Center Speaker (UQS)	~	Green	16 pin	09	Yellow/White	(+)	Amplifier, middle/left of trunk
Front Center Speaker (UQS)	~	Green	16 pin	01	LtBlue/Yellow	(-)	Amplifier, middle/left of trunk
LF Midrange Speaker (UQS)	~	Green	16 pin	03	LtBlue/Violet	(+)	Amplifier, middle/left of trunk
LF Midrange Speaker (UQS)	~	Green	16 pin	11	LtBlue/Brown	(-)	Amplifier, middle/left of trunk
RF Midrange Speaker (UQS)	~	Green	16 pin	10	White/Yellow	(+)	Amplifier, middle/left of trunk
RF Midrange Speaker (UQS)	~	Green	16 pin	02	Brown/Black	(-)	Amplifier, middle/left of trunk
Right SUB Speaker (UQS)	~	Green	16 pin	14	LtGreen/Violet	(+)	Amplifier, middle/left of trunk
Right SUB Speaker (UQS)	~	Green	16 pin	06	Gray/Black	(-)	Amplifier, middle/left of trunk
LR SUB Speaker (UQS)	~	Green	16 pin	07	LtBlue/Gray	(+)	Amplifier, middle/left of trunk
LR SUB Speaker (UQS)	~	Green	16 pin	15	LtGreen/Black	(-)	Amplifier, middle/left of trunk
Front Center Speaker (UQA)	~	Green	16 pin	03	Yellow/White	(+)	Amplifier, middle/left of trunk
Front Center Speaker (UQA)	~	Green	16 pin	11	LtBlue/Yellow	(-)	Amplifier, middle/left of trunk
RF Midrange Speaker (UQA)	~	Green	16 pin	06	White/Yellow	(+)	Amplifier, middle/left of trunk
RF Midrange Speaker (UQA)	~	Green	16 pin	14	Brown/Black	(-)	Amplifier, middle/left of trunk

AMPLIFIER CONNECTORS (WIRE SIDE)



RADIO WIRE REFERENCE CHART

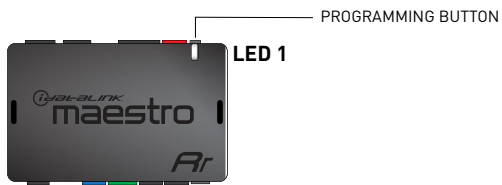
S8-GM3 T-harness Wire Description	Polarity	Wire Color on Maestro T-Harness	Wire Color on Kenwood cable
Illumination	(+)	Orange	Orange/White
Reverse Light*	(+)	Purple/White	Purple/White
E-Brake	(-)	Lt Green	Lt Green
VSS (vehicle speed sensor)	(DATA)	Pink	Pink

***Note:** REVERSE LIGHT purple/white wire is a low current positive output used to trigger the radio only. Do NOT connect to anything other than the radio's reverse input.
If no camera is installed/desired, do not connect the radio's reverse wire. If installing an aftermarket camera, do NOT connect power for the camera to the Maestro's purple/white wire or module damage will occur.

Head unit adapter wiring (optional accessory, sold separately)

ACC-HU-KEN1 Wire Description	Polarity	Wire Color on Adapter	Kenwood Radio
CAM	(+)	Green/Red	Refer to camera/radio manual
CAM	(-)	Green/White	Refer to camera/radio manual
Steering Wheel Controls	(DATA)	Blue/Yellow	n/a

MODULE DIAGNOSTICS



LED 1 Module/Firmware status	LED STATUS	DIAGNOSTIC
● or ●	RED or GREEN flashing	LED flashes 1 or more times, either red or green, when a steering wheel button is pressed : normal operation.
●	1 RED flash	Module has no firmware. Flash module using Weblink Desktop and log in. Do <u>NOT</u> use DEMO MODE.
●	2 RED flashes	Problem detected. Consult troubleshooting table.
●	1 GREEN flash	After radio boots up : Normal operation.
●	OFF	Normal operation (inactive).

TROUBLESHOOTING TABLE

PROBLEM	SOLUTION
Gauges do not work, radio shows OBD2 Error 1 or Error 2.	<p>Ensure OBDII connector is securely attached to the OBD2 connector of the vehicle. If you hardwired connections at the OBDII, check connections at the OBDII connector. Make sure the RED/BROWN wire is on PIN 6 and the YELLOW/BROWN wire is connected to PIN 14 of the OBDII connector. Do not use T-Taps. Soldering or military splicing methods are recommended.</p> <p>If anything else is connected to the OBD2 or CAN wires of vehicle (programmer, throttle controller, insurance tracker, etc.) try unplugging it to see if gauges work. If gauges work without it installed, call tech support for options. Reset the RR.</p>
The light on the Maestro is blinking RED TWICE and the radio IS turning on.	<p>Ensure the 4-pin data cable is connected between the radio and the RR, and that it is plugged into the black port on the Maestro RR. The red and blue ports on the RR should be empty, unless using MIC1 (connects to red port).</p> <p>Make sure the correct radio model and serial number were entered during the flash. Verify the radio's serial number entered during the flash matches what is listed on the radio screen. This can be found in the settings of the radio, listed as Device Id, Device Number, or Serial Number.</p>
The light on the Maestro is blinking RED TWICE but radio is NOT turning on.	<p>Ensure screen cables/extensions are all fully seated, no bent pins, wires pinched, etc.</p> <p>Test red and yellow wires for DC voltage at radio chassis using a multimeter. Contact support if no voltage on red or yellow.</p>
Steering wheel controls do not work but LED on the Maestro does blink when steering wheel buttons are pressed.	Verify when flashing the Maestro module that buttons have been assigned and are not set to "none".
Steering wheel controls do not work and LED on the Maestro does NOT blink when steering wheel buttons are pressed.	Verify the white and black plugs are configured as shown in step 3-4 of the diagram.
No sound.	BOSE - amplifier must be bypassed. Non-amplified - inspect speaker wire connections at step 1. Use a test speaker to identify if radio is outputting sound. If no output, there may be an issue with the vehicle wiring or the radio.
No park assist sound or seat vibration.	Fully removing the factory amplifier will disable these functions; it must remain connected to power, ground, and data for them to function.
Reverse camera image not displaying, but radio does switch to blank/no image screen.	Ensure the vehicle is RUNNING, not just in the RUN position/Ignition on.

MAESTRO RR RESET PROCEDURE:

Turn the key to the OFF position, then disconnect all connectors from the module.

Press and hold the module's programming button and connect all the connectors back to the module. Wait, the module's LED will flash RED rapidly (this may take up to 10 seconds).

Release the programming button. Wait, the LED will turn solid GREEN for 2 seconds to show the reset was successful.

TECHNICAL ASSISTANCE

Phone: 1-866-427-2999

Email: maestro.support@idatalink.com

IMPORTANT: To ensure proper operation, the aftermarket radio needs to have the latest firmware from the manufacturer. Please visit the radio manufacturer's website and look for any updates pertaining to your radio.