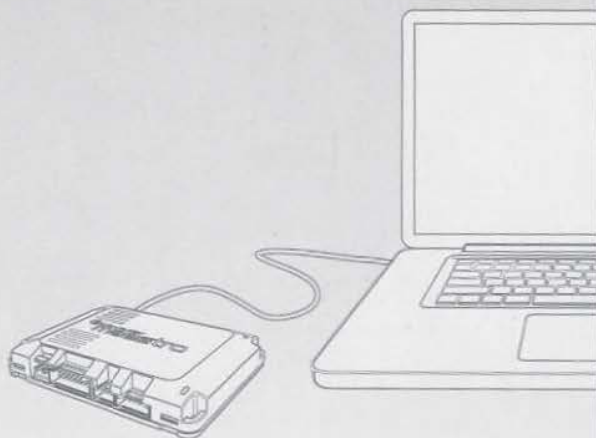




SW | AR | AR | SW HD

QUICK START GUIDE



FOLLOW THE WEB PROGRAMMING
STEPS INSIDE PRIOR TO INSTALLATION.



WEB PROGRAMMING

1- INSTALL THE WEBLINK DESKTOP APPLICATION

Go to www.idatalinkmaestro.com/plugin, select your software version (Mac or PC) and follow the installation steps. Be sure to review the system requirements before installing.

2- REGISTER A WEBLINK ACCOUNT

Once installed, complete the Weblink registration process and log into Weblink.

3- CONNECT THE MODULE TO YOUR COMPUTER

Use the included USB cable to connect your iDatalink Maestro module to your computer.

4- WEBLINK PROGRAMMING

Follow the programming steps until your module is flashed, then download your install guide and owner's manual if applicable.

5- COMPLETE VEHICLE-SPECIFIC INSTALLATION

Follow the steps in your install guide and complete the installation. ADS recommends having your iDatalink Maestro device installed by a certified technician. **Additional accessories may be required and sold separately.**



TECHNICAL SUPPORT

877.212.6169

idatalinkmaestro.com

LIMITED 1-YEAR WARRANTY

Automotive Data Solutions Inc. ("ADS") warrants to the original purchaser of the product that the following components product shall be free of defects in material and workmanship under normal use and circumstances for the period of one (1) year from the date of original installation.

"Authorized Dealer" is defined by ADS as a company who qualifies to purchase products directly from ADS, or one of its approved distributors. Thus, products not sold nor installed by an Authorized Dealer are not covered by this warranty. This includes, but is not limited to, ADS products sold on Amazon.com, eBay.com, Walmart.com and Newegg.com. To find an authorized retailer near you, visit <http://maestro.idatalink.com/find-product>.

In the event of any product malfunction during the Warranty period, the original purchaser must return to the Authorized Dealer where it was originally purchased with the original proof of purchase. If a malfunction is detected, the Authorized Dealer will elect to repair or replace the product at its discretion. Labor costs may be applicable and are at the discretion of the Authorized Dealer.

ADS is not responsible for any damages whatsoever, including but not limited to any consequential damages, incidental damages, damages for loss of time, loss of earnings, commercial loss, loss of economic opportunity and the like that may or may not have resulted from the installation or operation of an iDatalink Maestro product.



TECHNICAL SUPPORT

877.212.6169

idatalinkmaestro.com

CHEVROLET AND GMC VEHICLES
(SEE DETAILS INSIDE)

INSTALL GUIDE

GM6-RR2-DS-(APX-S8-GM4)-EN

RETAINS STEERING WHEEL CONTROLS AND MORE!

(DOES NOT RETAIN FACTORY AMPLIFIER)



**HEAD UNIT
ADAPTER READY**

PRODUCTS REQUIRED

iDatalink Maestro RR2 Radio Replacement Interface
iDatalink Maestro APX-S8-GM4 Dash Kit
Kenwood APX radios

PROGRAMMED FIRMWARE: GM6-RR2-DS

WELCOME

Congratulations on the purchase of your iDatalink Maestro RR2 Radio replacement solution. You are now a few simple steps away from enjoying your new car radio with enhanced features.

Before starting your installation, please ensure that your iDatalink Maestro module is programmed with the correct firmware for your vehicle and that you carefully review the install guide.

Please note that Maestro RR2 will only retain functionalities that were originally available in the vehicle.

NEED HELP?

1 866 427-2999

maestro.support@idatalink.com

ADDITIONAL INFORMATION AND ACCESSORIES

Installation, product information, vehicle specific videos.

[VIDEO HELP](#)



Last flash information, steering control configuration, vehicle information.

[VERIFY FLASH](#)



Software to program module.

[WEBLINK](#)



Configuring the RR2's Programmable Outputs

[Maestro RR2 Programmable Outputs Guide](#)

HEAD UNIT ADAPTER:
ACC-HU-KEN1

MIC1
(Factory microphone interface module)

SAT1, SAT2
(Antenna adapter)

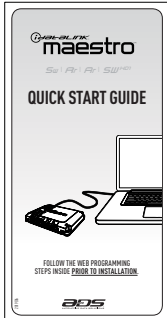
Radar Detectors



[Radar Installation Guides](#)

APX-S8-GM4 COMPONENTS

QUICK START GUIDE



3MVHB
for mounting RR/RR2 module.



SM5-6P*10
10x (M5, 6mm screw)



GND



SM5-8P*2
2x (M5, 8mm screw)



Maestro panel removal tool

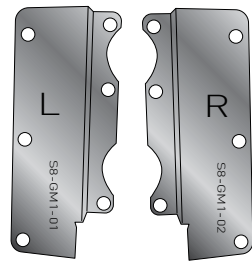


CHASSIS BRACKET



SCREEN BRACKET
LEFT (L)
S8-GM1-01

RIGHT (R)
S8-GM1-02



SCREEN BRACKET ADAPTERS (CANYON, COLORADO)
LEFT (L)
S8-GM1-05

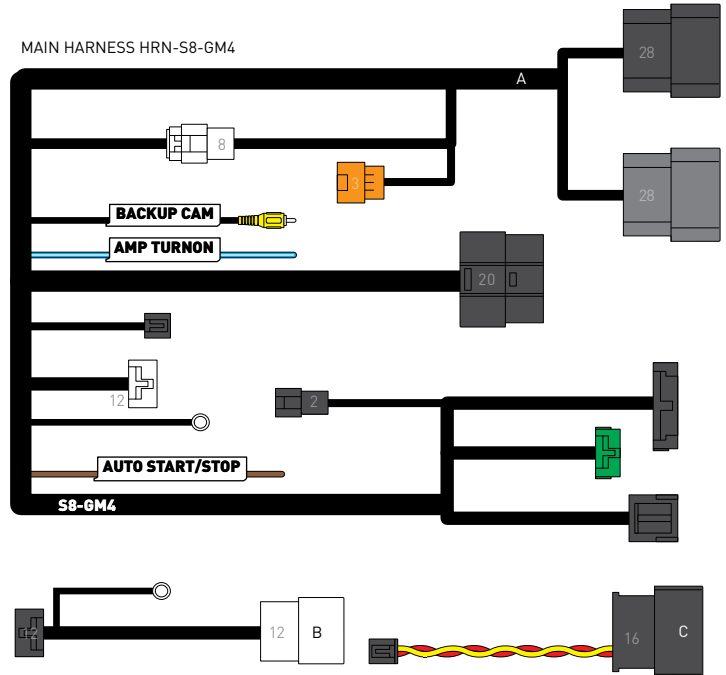
RIGHT (R)
S8-GM1-06



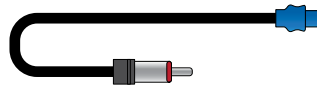
CABLE TIE



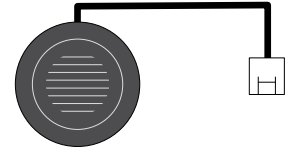
MAIN HARNESS HRN-S8-GM4



AM/FM ANTENNA ADAPTER



SP1 SPEAKER



RIBBON CABLE ADAPTER



USB ADAPTER (USB-A TO MICRO USB)



USB ADAPTER (USB-C)



USB ADAPTER (USB-C TO MICRO USB)



USB INSERT



SCREEN BRACKET ADAPTERS (ACADIA)
LEFT (L)
S8-GM1-03

RIGHT (R)
S8-GM1-04



VEHICLE LIST

MAKE	MODEL *	TRIM	YEAR	INSTALL TYPE	NOTE:
CHEVROLET	Colorado	With 8" radio	19-23	02	DOES NOT RETAIN FACTORY AMPLIFIER
	Acadia	With 8" radio	20-23	01	DOES NOT RETAIN FACTORY AMPLIFIER
GMC	Canyon	With 8" radio	19-23	02	DOES NOT RETAIN FACTORY AMPLIFIER

* Click on your model to go to the related install type instruction page.

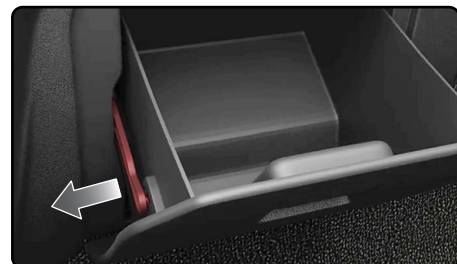
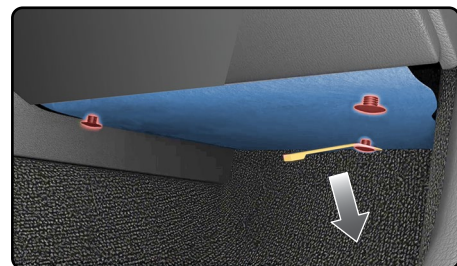
DISASSEMBLY P1 /3

INSTALL TYPE-01

NOTE: The amplifier is not retained. Bypass factory amplifier to integrate audio as desired (adding amplifiers, replacing speakers, etc.) as MOST network is not supported at this time with the Maestro interface. Ensure the amplifier remains connected to power, ground and data connections in the vehicle. Only unplug the two connectors shown in the vehicle wire reference chart.

1. Using a plastic panel removal tool, remove radio trim bezel.
2. Remove the four (4) 7mm screws securing radio bezel to dash, then pull to remove, disconnect and set aside.
3. To access the 10-pin black Start-Stop connector:
Unclip and remove both side panels on center console.

Raise the lid on the console, then unclip and lift (starting from bottom) the center console trim panel.
4. Remove the three clips securing the under dash panel below the glovebox. Pull the panel down.
5. Open glove box, and release support strut on driver side.
Let glovebox swing down all the way and pull out to remove.



DISASSEMBLY P2 /3

INSTALL TYPE-01

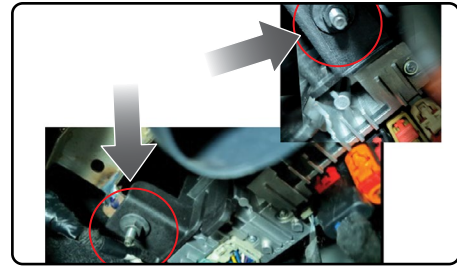
6. Remove passenger side dash endcap panel.



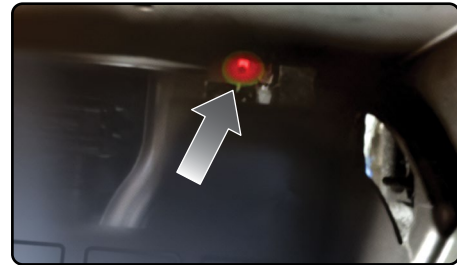
7. Remove passenger side kick panel.



8. In the glove box cavity, remove the two (2) 10mm nuts facing DOWN, holding radio chassis mount in place.



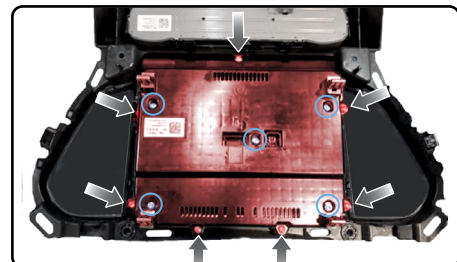
9. Remove the 7mm screw visible in top right hole, in glove box cavity.



10. Unplug all electrical connections, antennas and remove the radio chassis from the mounting bracket assembly. Depress the clips and pull the tuner free of the mounting bracket. If needed for clearance, remove the 7mm screw holding the lower air duct, under the glove box.

11. Remove the seven (7) T-15 screws around the radio screen perimeter (in red) and the five (5) T-15 screws in the backing panel (in blue).

Lift/remove the backing panel.

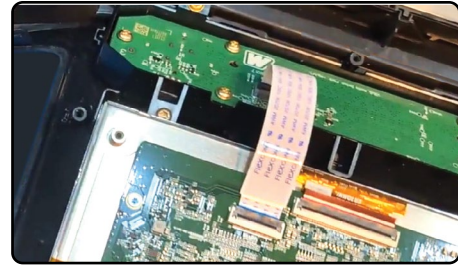


DISASSEMBLY P3/3

INSTALL TYPE-01

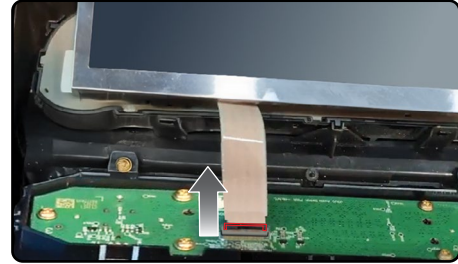
- 12.** Notice the position of the ribbon cable: the writing on the ribbon cable faces UP when installed fully, the replacement cable will be the same orientation once installed/routed to screen area.

Flip the screen.



- 13.** Disconnect the ribbon cable by lifting the locking tab on the lower circuit board, then sliding it out.

Remove factory screen.

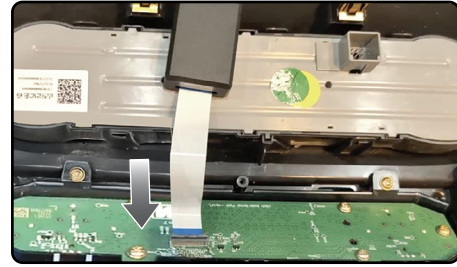


RADIO ASSEMBLY P1/1

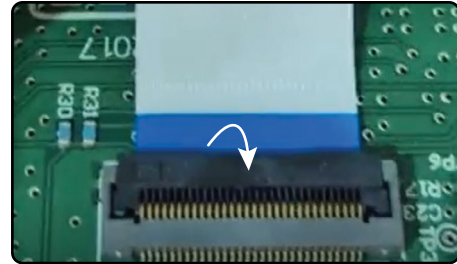
INSTALL TYPE-01

1. Use the cable ribbon adapte from S8-GM4 KIT to replace original ribbon cable.

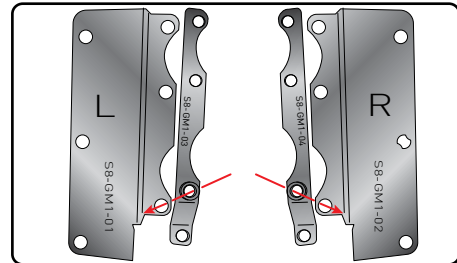
NOTE – The GOLD contacts on the ribbon must face down to the circuit board, while the BLUE color faces UP. When inserting the cable into the board, the text WILL face down, until the ribbon cable is routed to the screen area, bending it over to reach the screen, just as the factory cable was.



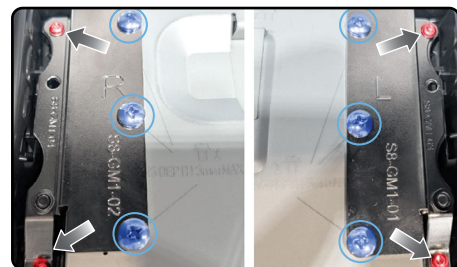
2. Connect the ribbon cable and flip the latch to lock it in place. Flip up the ribbon into the radio screen area.



3. Using two (2) SM5-6P screws :
Secure S8-GM4-03 bracket to S8-GM4-01 bracket.
Secure S8-GM4-04 bracket to S8 S8-GM4-02 bracket



4. Place the new radio screen in the factory trim bezel. Align the left (L) and right (R) brackets as shown, and secure to radio using six (6) SM5-6P screws (in blue).



5. Secure the assembly to the factory bezel using the **four** (4) factory screws (in red) removed during disassembly.

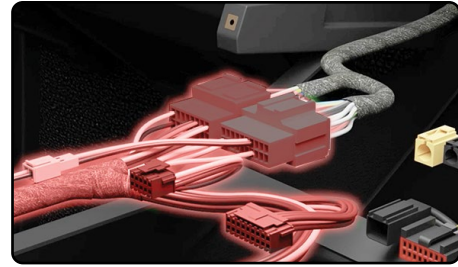
NOTE: DO NOT overtighten the screws, just snug to the bezel. There will be a slight gap around the screen with the assembly fully tightened, but if screws are over-tightened, the screw will strip or the radio screen will be damaged.

INSTALL AND CONNECT P1 /2

INSTALL TYPE-01

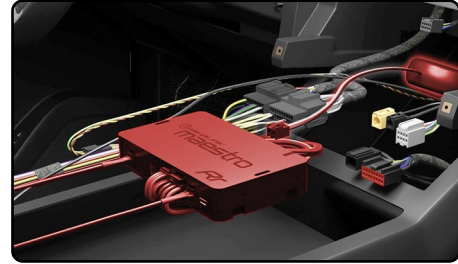
1. Connect the A-S8-GM4 T-harness to the main factory wiring harness (behind glove box).

Attach the ground terminal to the chassis.

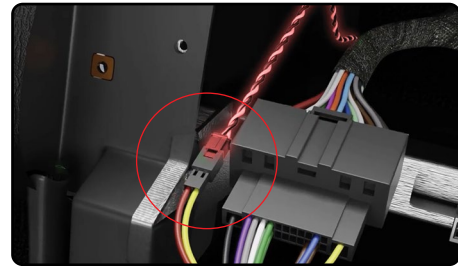


2. Connect the Maestro RR to the GM4 T-harness. Then, connect the 4-pin data cable and 3.5mm audio cable to the Maestro module (the 4-pin data cable and 3.5mm audio cable are provided with the Maestro module).

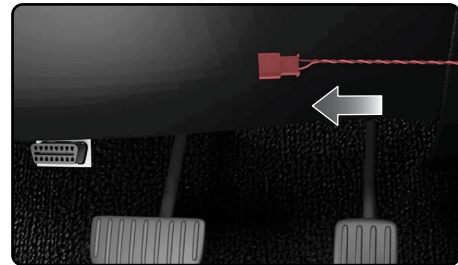
Connect the supplied chime speaker to the Maestro.



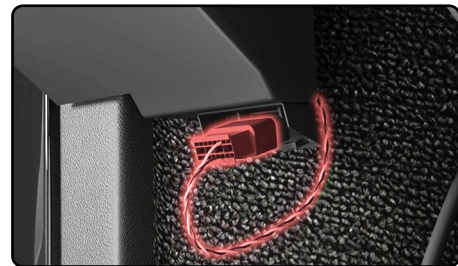
3. Connect the OBDII harness (C-S8-GM4) black 2-pin plug to the main GM4 T-harness (A-S8-GM4).



Route the OBDII cable through the dash to the OBDII port in vehicle.



4. Connect the OBDII plug to the OBDII port.



5. Connect the A-S8-GM4 T-harness 12-pin white connector to white connector on B-S8-GM4 harness. Plug 12-pin black connector (B-S8-GM4) to ribbon cable adapter (plugged into circuit board in radio bezel).

Attach the ground terminal (from B-S8-GM4) to the back of the screen using the single Phillips screw.

INSTALL AND CONNECT P2 /2

INSTALL TYPE-01

6. If equipped with START-STOP: connect brown AUTO START/STOP wire to blue wire on pin 2 of 10-pin black connector, under center console top panel.

7. Press the S8-GM4 T-harness and Maestro module into the dash cavity. Install the chime speaker and route the 2-pin end to the radio cavity.

Connect the supplied antenna adapter to the factory antenna connection. Route the USB-C cable included with the radio to the glove box

8. Make all connections to the back of the aftermarket radio (use head unit adapter OR cut connector from the S8-GM4 harness and connect the wires as shown in the wiring diagram). Make sure to connect the 4-pin data cable to the iDatalink I/F port and 3.5mm audio cable to the iDatalink I/F port.

Secure USB with metal clip.

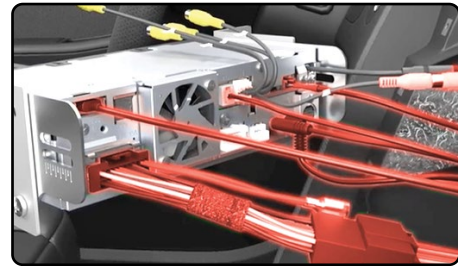
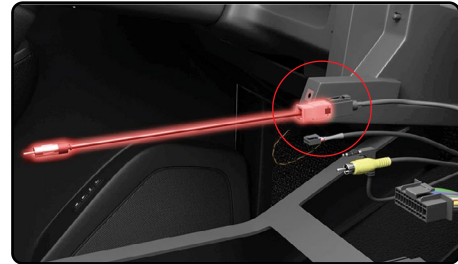
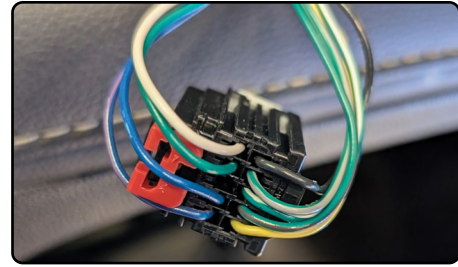
9. Slide radio chassis into the factory radio tuner bracket and secure with a zip tie.

Reinstall the tuner bracket on the two (2) 10mm studs, reinstall the nuts and the 7mm bolt through the glove box opening. Reinstall the air vent 7mm screw (if removed earlier for clearance).

10. Connect the display cables to the back of the screen, routing them so they do not get pinched.

11. Reinstall the radio bezel into place as it was originally. Secure it with the four (4) 7mm screws removed earlier.

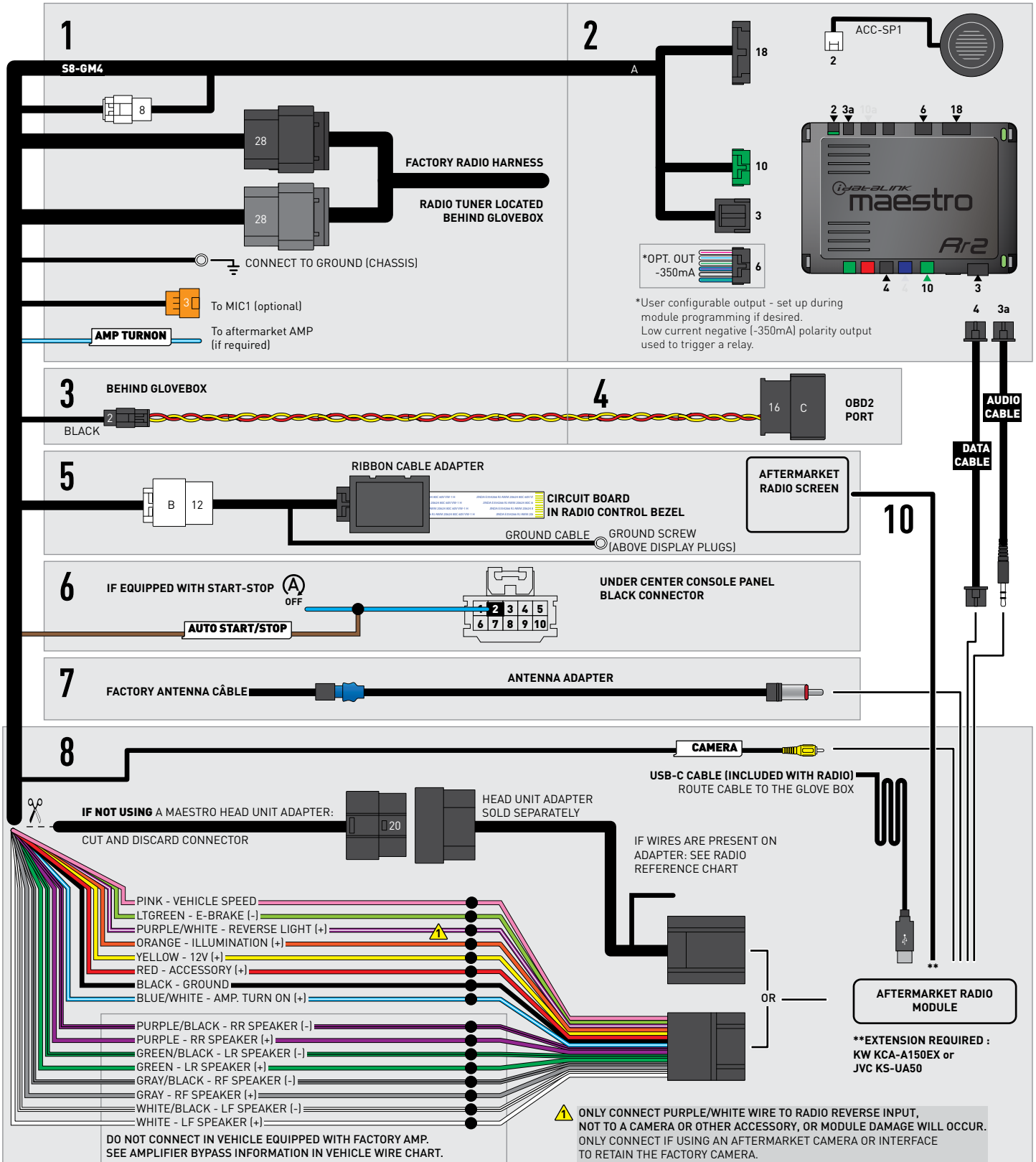
Put everything that was disassembled back into place, using reverse order of the removal steps.



WIRING DIAGRAM

INSTALL TYPE-01

SOME CABLES INCLUDED WITH MAESTRO MODULE ARE NOT USED



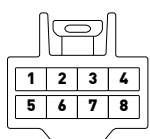
VEHICLE WIRE REFERENCE CHART

INSTALL TYPE-01

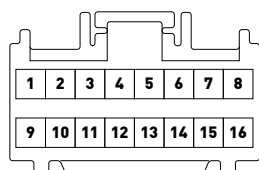
Wire Description	Connector Name	Connector Color	Connector Type	Position	Wire Color	Polarity	Wire Location
LR Subwoofer	~	~	8 pin	01	Blue/Gray	(+)	Amplifier, left of passenger foot well
R Subwoofer	~	~	8 pin	05	Gray/Black	(-)	Amplifier, left of passenger foot well
RF Speaker	~	~	8 pin	02	Yellow	(+)	Amplifier, left of passenger foot well
RF Speaker signal	~	~	8 pin	06	Yellow/Black	(-)	Amplifier, left of passenger foot well
LF Speaker	~	~	8 pin	03	Blue	(+)	Amplifier, left of passenger foot well
LF Speaker signal	~	~	8 pin	07	Brown/Blue	(-)	Amplifier, left of passenger foot well
Front Center Speaker	~	~	16 pin	05	Yellow/White	(+)	Amplifier, left of passenger foot well
Front Center Speaker	~	~	16 pin	13	Blue/Yellow	(-)	Amplifier, left of passenger foot well
RR Speaker	~	~	16 pin	06	White	(+)	Amplifier, left of passenger foot well
RR Speaker signal	~	~	16 pin	14	Blue/Black	(-)	Amplifier, left of passenger foot well
LR Speaker	~	~	16 pin	07	Green	(+)	Amplifier, left of passenger foot well
LR Speaker signal	~	~	16 pin	15	Green/Black	(-)	Amplifier, left of passenger foot well



AMPLIFIER CONNECTORS (WIRE SIDE)



GRAY



BLACK

DISASSEMBLY P1 /2

INSTALL TYPE-02

NOTE: The amplifier is not retained. Bypass factory amplifier to integrate audio as desired (adding amplifiers, replacing speakers, etc.) as MOST network is not supported at this time with the Maestro interface. Ensure the amplifier remains connected to power, ground and data connections in the vehicle. Only unplug the two connectors shown in the vehicle wire reference chart.

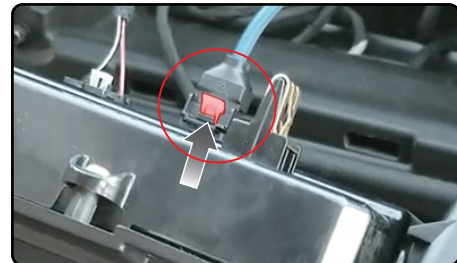
1. Using a plastic panel removal tool, remove radio trim bezel.



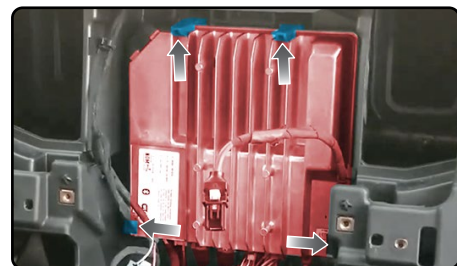
2. Remove the four (4) 7mm screws securing radio bezel to dash, then pry out to remove, disconnect and remove.



NOTE: plugs have security tabs that must be pulled back before plugs can be unplugged.



3. Radio is pressure fit with retaining tabs. Depress the tabs and pull the radio chassis out.



4. Unplug and remove the radio.

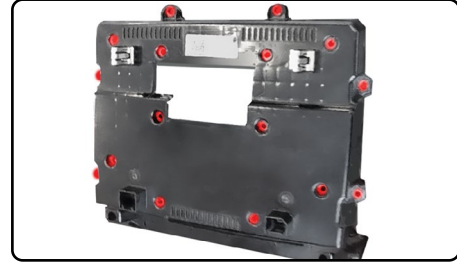
The HMI module is below the radio. Unplug the GRAY 12-pin plug and set aside for later.



DISASSEMBLY P2 /2

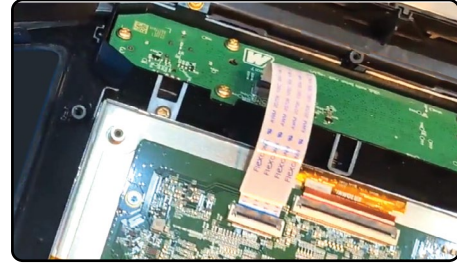
INSTALL TYPE-02

5. Remove 16 screws from rear screen bezel and remove the bezel.



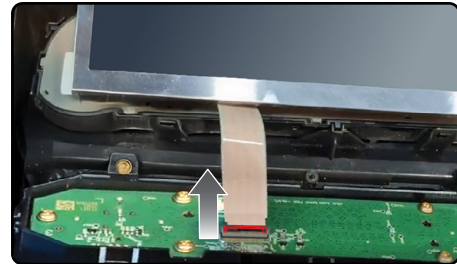
6. Notice the position of the ribbon cable: the writing on the ribbon cable faces UP when installed fully, the replacement cable will be the same orientation once installed/routed to screen area.

Flip the screen.



7. Disconnect the ribbon cable by lifting the locking tab on the lower circuit board, then sliding it out.

Remove factory screen.



RADIO ASSEMBLY P1 /1

INSTALL TYPE-02

1. Use the cable ribbon adapte from S8-GM4 KIT to replace original ribbon cable.

NOTE – The GOLD contacts on the ribbon must face down to the circuit board, while the BLUE color faces UP. When inserting the cable into the board, the text WILL face down, until the ribbon cable is routed to the screen area, bending it over to reach the screen, just as the factory cable was.

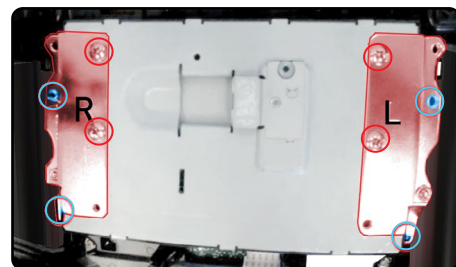
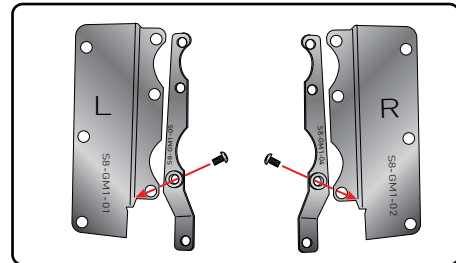
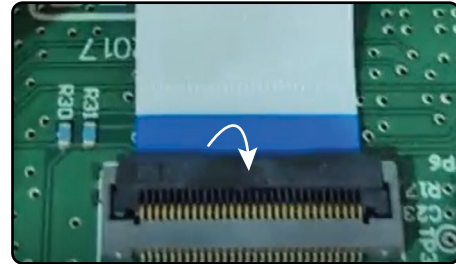
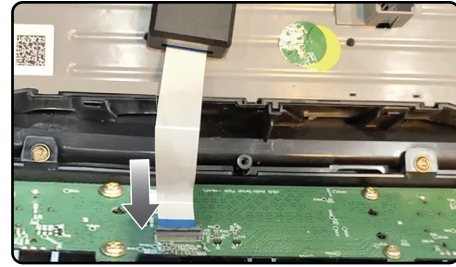
2. Connect the ribbon cable and flip the latch to lock it in place. Flip up the ribbon into the radio screen area.

3. Using two (2) SM5-6P screws :
Secure S8-GM4-05 bracket to S8-GM4-01 bracket.
Secure S8-GM4-06 bracket to S8 S8-GM4-02 bracket

4. Place the new radio screen in the factory trim bezel. Align the left (L) and right (R) brackets as shown, and secure to radio using four (4) SM5-6P screws (red). Use the top two holes on each side, the bottom will be used later during reassembly.

5. Secure the assembly to the factory bezel using the four (4) factory screws (blue) removed during disassembly.

NOTE: Do NOT overtighten the screws, just snug to the bezel. There will be a slight gap around the screen with the assembly fully tightened, but if screws are over-tightened, the screw will strip or the radio screen will be damaged.



INSTALL AND CONNECT P1 /2

INSTALL TYPE-02

1. Connect the A-S8-GM4 T-harness to the main factory wiring harness.

Attach the ground terminal to the chassis.

2. Connect the Maestro RR to the GM4 T-harness. Then, connect the 4-pin data cable and 3.5mm audio cable to the to the Maestro module (the 4-pin data cable and 3.5mm audio cable are provided with the Maestro module).

Connect the supplied chime speaker to the Maestro.

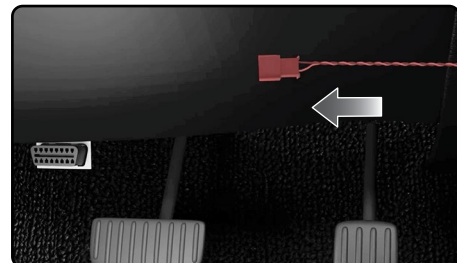
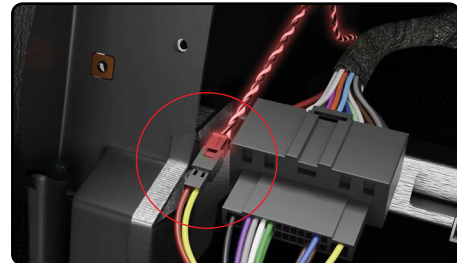
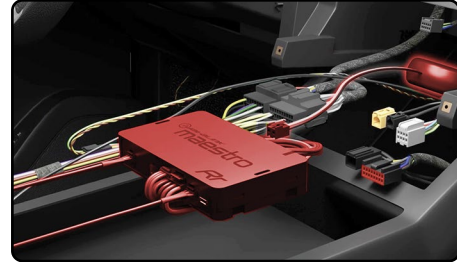
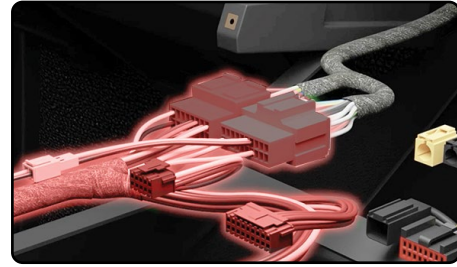
3. Connect the OBDII harness (C-S8-GM4) black 2-pin plug to the main GM4 T-harness (A-S8-GM4).

Route the OBDII cable through the dash to the OBDII port in vehicle.

4. Connect the OBDII plug to the OBDII port.

5. Connect the A-S8-GM4 T-harness 12-pin white connector to white connector on B-S8-GM4 harness. Plug 12-pin black connector (B-S8-GM4) to ribbon cable adapter (plugged into circuit board in radio bezel).

Attach the ground terminal (from B-S8-GM4) to the back of the screen using the single Phillips screw.



INSTALL AND CONNECT P2 /2

- 6.** Press the S8-GM4 T-harness and Maestro module into the lower dash cavity.

Install the chime speaker and route the 2-pin end to the radio cavity.

Connect the supplied antenna adapter to the factory antenna connection.

- 7.** Press the S8-GM4 T-harness and Maestro module into the lower dash cavity. Install the chime speaker and route the 2-pin end to the radio cavity.

Connect the supplied antenna adapter to the factory antenna connection. Route the USB-C cable included with the radio to the glove box

- 8.** Make all connections to the back of the aftermarket radio (use head unit adapter OR cut connector from the S8-GM4 harness and connect the wires as shown in the wiring diagram). Make sure to connect the 4-pin data cable to the iDatalink I/F port and 3.5mm audio cable to the iDatalink I/F port.

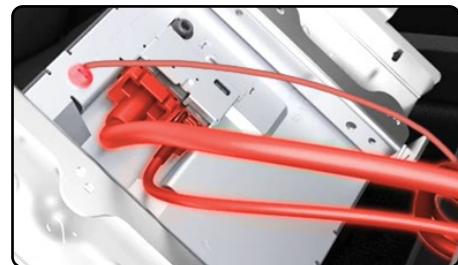
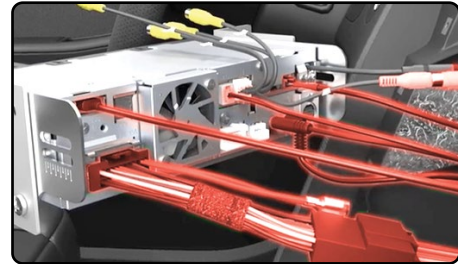
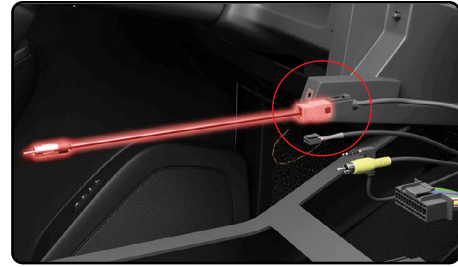
Secure USB with metal clip.

- 9.** Connect the display cables to the back of the screen, routing them so they do not get pinched.

- 10.** Reinstall the radio bezel into place as it was originally. Secure it with the four (4) 7mm screws removed earlier.

Put everything that was disassembled back into place, using reverse order of the removal steps.

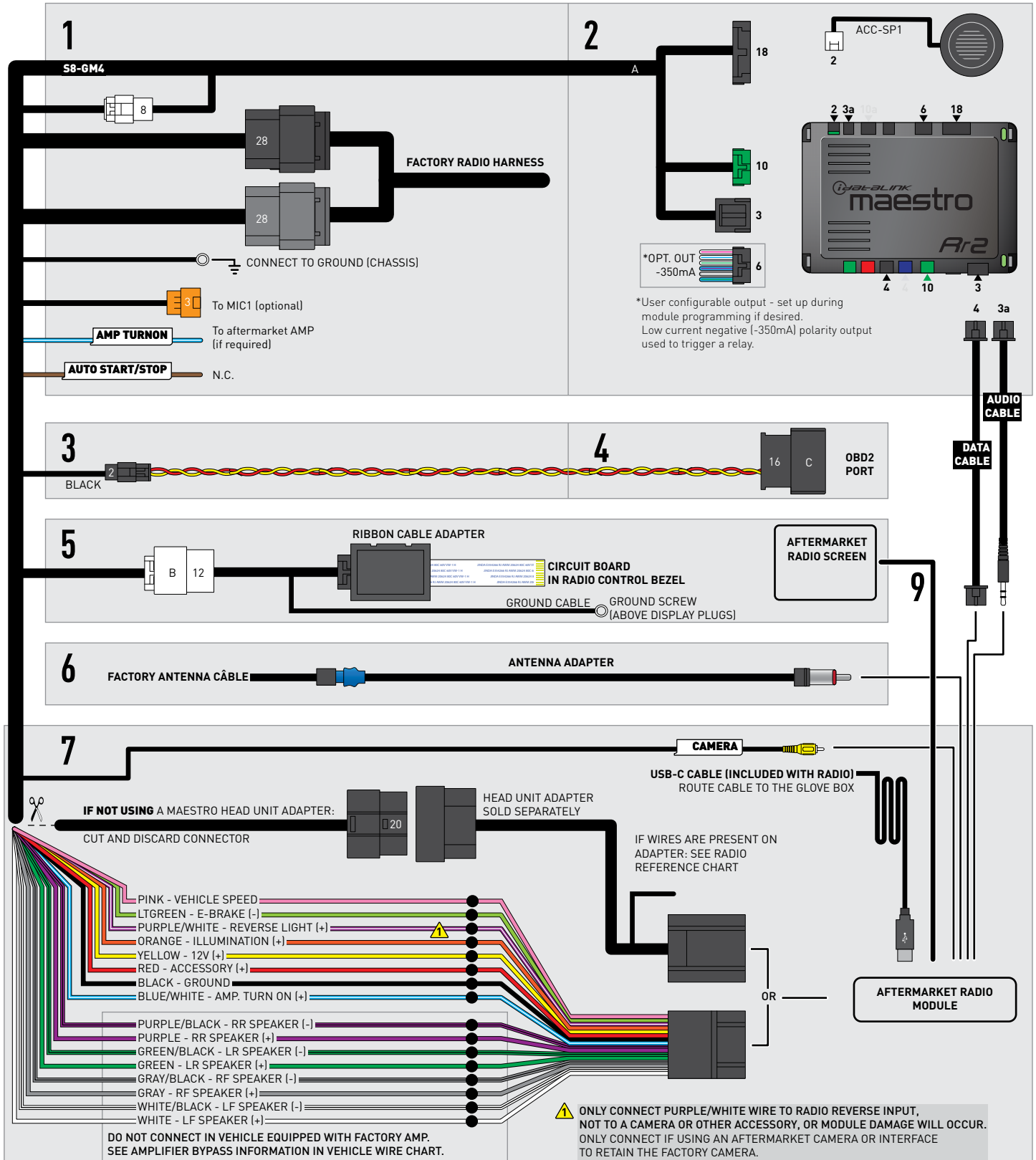
INSTALL TYPE-02



WIRING DIAGRAM

INSTALL TYPE-02

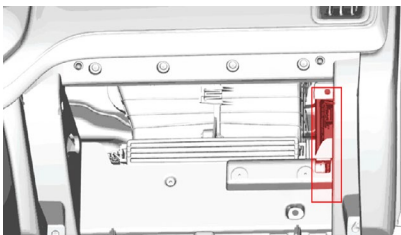
SOME CABLES INCLUDED WITH MAESTRO MODULE ARE NOT USED



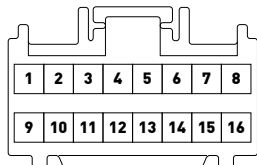
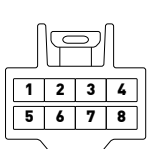
VEHICLE WIRE REFERENCE CHART

INSTALL TYPE-02

Wire Description	Connector Name	Connector Color	Connector Type	Position	Wire Color	Polarity	Wire Location
RF Speaker	~	~	8 pin	01	Yellow	(+)	Amplifier, in dashboard, to the right of the glove box
RF Speaker	~	~	8 pin	05	Yellow/Black	(-)	Amplifier, in dashboard, to the right of the glove box
LF Speaker	~	~	8 pin	03	Blue	(+)	Amplifier, in dashboard, to the right of the glove box
LF Speaker	~	~	8 pin	07	Brown/Blue	(-)	Amplifier, in dashboard, to the right of the glove box
RF Tweeter (if equipped)	~	~	16 pin	10	Brown/Green	(+)	Amplifier, in dashboard, to the right of the glove box
RF Tweeter (if equipped)	~	~	16 pin	02	Violet/Brown	(-)	Amplifier, in dashboard, to the right of the glove box
LF Tweeter (if equipped)	~	~	16 pin	03	Yellow/Blue	(+)	Amplifier, in dashboard, to the right of the glove box
LF Tweeter (if equipped)	~	~	16 pin	11	Violet/Gray	(-)	Amplifier, in dashboard, to the right of the glove box
RR Speaker	~	~	16 pin	04	White	(+)	Amplifier, in dashboard, to the right of the glove box
RR Speaker	~	~	16 pin	12	Blue/Black	(-)	Amplifier, in dashboard, to the right of the glove box
LR Speaker	~	~	16 pin	05	Green	(+)	Amplifier, in dashboard, to the right of the glove box
LR Speaker	~	~	16 pin	13	Green/Black	(-)	Amplifier, in dashboard, to the right of the glove box
Front Center Speaker	~	~	16 pin	07	Yellow/White	(+)	Amplifier, in dashboard, to the right of the glove box
Front Center Speaker	~	~	16 pin	15	Blue/Yellow	(-)	Amplifier, in dashboard, to the right of the glove box



AMPLIFIER CONNECTORS (WIRE SIDE)



RADIO WIRE REFERENCE CHART

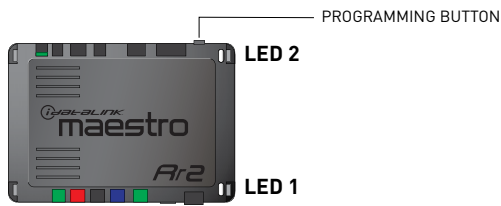
S8-GM4 T-harness Wire Description	Polarity	Wire Color on Maestro T-Harness	Wire Color on Kenwood cable
Illumination	(+)	Orange	Orange/White
Reverse Light*	(+)	Purple/White	Purple/White
E-Brake	(-)	Lt Green	Lt Green
VSS (vehicle speed sensor)	(DATA)	Pink	Pink

***Note:** REVERSE LIGHT purple/white wire is a low current positive output used to trigger the radio only. Do NOT connect to anything other than the radio's reverse input.
If no camera is installed/desired, do not connect the radio's reverse wire. If installing an aftermarket camera, do NOT connect power for the camera to the Maestro's purple/white wire or module damage will occur.

Head unit adapter wiring (optional accessory, sold separately)

ACC-HU-KEN1 Wire Description	Polarity	Wire Color on Adapter	Kenwood Radio
CAM	(+)	Green/Red	Refer to camera/radio manual
CAM	(-)	Green/White	Refer to camera/radio manual
Steering Wheel Controls	(DATA)	Blue/Yellow	n/a

MODULE DIAGNOSTICS



LED 1 Module/Firmware status	LED 2 Bluetooth activity	LED STATUS	DIAGNOSTIC
● or ●		RED or GREEN flashing	LED flashes 1 or more times, either red or green, when a steering wheel button is pressed : normal operation.
●		1 RED flash	Module has no firmware. Flash module using Weblink Desktop and log in. Do <u>NOT</u> use DEMO MODE.
●		2 RED flashes	Problem detected. Consult troubleshooting table.
●		1 GREEN flash	After radio boots up : Normal operation.
	●	3 GREEN flashes	Bluetooth is activated. Turns off after one minute: Normal operation.
●	●	OFF	Normal operation (inactive).

TROUBLESHOOTING TABLE

PROBLEM	SOLUTION
Gauges do not work, radio shows OBD2 Error 1 or Error 2.	<p>Ensure OBDII connector is securely attached to the OBD2 connector of the vehicle. If you hardwired connections at the OBDII, check connections at the OBDII connector. Make sure the RED/BROWN wire is on PIN 6 and the YELLOW/BROWN wire is connected to PIN 14 of the OBDII connector. Do not use T-Taps. Soldering or military splicing methods are recommended.</p> <p>If anything else is connected to the OBD2 or CAN wires of vehicle (programmer, throttle controller, insurance tracker, etc.) try unplugging it to see if gauges work. If gauges work without it installed, call tech support for options. Reset the RR.</p>
The light on the Maestro is blinking RED TWICE and the radio IS turning on.	<p>Ensure the 4-pin data cable is connected between the radio and the RR, and that it is plugged into the black port on the Maestro RR. The red and blue ports on the RR should be empty, unless using MIC1 (connects to red port).</p> <p>Make sure the correct radio model and serial number were entered during the flash. Verify the radio's serial number entered during the flash matches what is listed on the radio screen. This can be found in the settings of the radio, listed as Device Id, Device Number, or Serial Number.</p>
The light on the Maestro is blinking RED TWICE but radio is NOT turning on.	<p>Ensure screen cables/extensions are all fully seated, no bent pins, wires pinched, etc.</p> <p>Test red and yellow wires for DC voltage at radio chassis using a multimeter. Contact support if no voltage on red or yellow.</p>
No sound.	BOSE - amplifier must be bypassed. Non-amplified - inspect speaker wire connections at step 8. Use a test speaker to identify if radio is outputting sound. If no output, there may be an issue with the vehicle wiring or the radio.
Park assist chime not working.	Vehicle with amplifier: the BOSE amplifier must remain connected to power, ground and data, or park assist will stop working.

MAESTRO RR RESET PROCEDURE:

Turn the key to the OFF position, then disconnect all connectors from the module.
Press and hold the module's programming button and connect all the connectors back to the module. Wait, the module's LED will flash RED rapidly (this may take up to 10 seconds).
Release the programming button. Wait, the LED will turn solid GREEN for 2 seconds to show the reset was successful.

TECHNICAL ASSISTANCE

Phone: 1-866-427-2999

Email: maestro.support@idatalink.com

IMPORTANT: To ensure proper operation, the aftermarket radio needs to have the latest firmware from the manufacturer. Please visit the radio manufacturer's website and look for any updates pertaining to your radio.