



Stealthbox®

INSTALLATION GUIDE
for the

SB-POL-SLINGSPKR/M770

SKU# 94636

2017-Up Polaris Slingshot

Enclosure Type: Sealed

Driver Type: M770-TCS-SG-TB

Nominal Impedance: 4 ohms

Continuous Power Handling: 100 watts (RMS method)

SB-POL-SLINGSPKR/M770 INSTR_SKU# 011484

! IMPORTANT

If you choose to perform the installation yourself, it is absolutely vital that the Stealthbox® be properly mounted to the vehicle according to these instructions. Failure to mount the enclosure properly presents two problems:

- 1) The sub-bass performance will suffer due to the movement of the enclosure caused by the force exerted by the woofer(s).
- 2) A loose enclosure presents a serious safety hazard in the event of a collision or sudden deceleration.

INSTALLATION
DIFFICULTY:

1 OUT OF 5

ESTIMATED TIME:
1 HOUR



*Thank you for choosing a JL Audio Stealthbox® for your automotive sound system.
With proper installation, your new vehicle-specific enclosed subwoofer system
will deliver years of listening pleasure.*

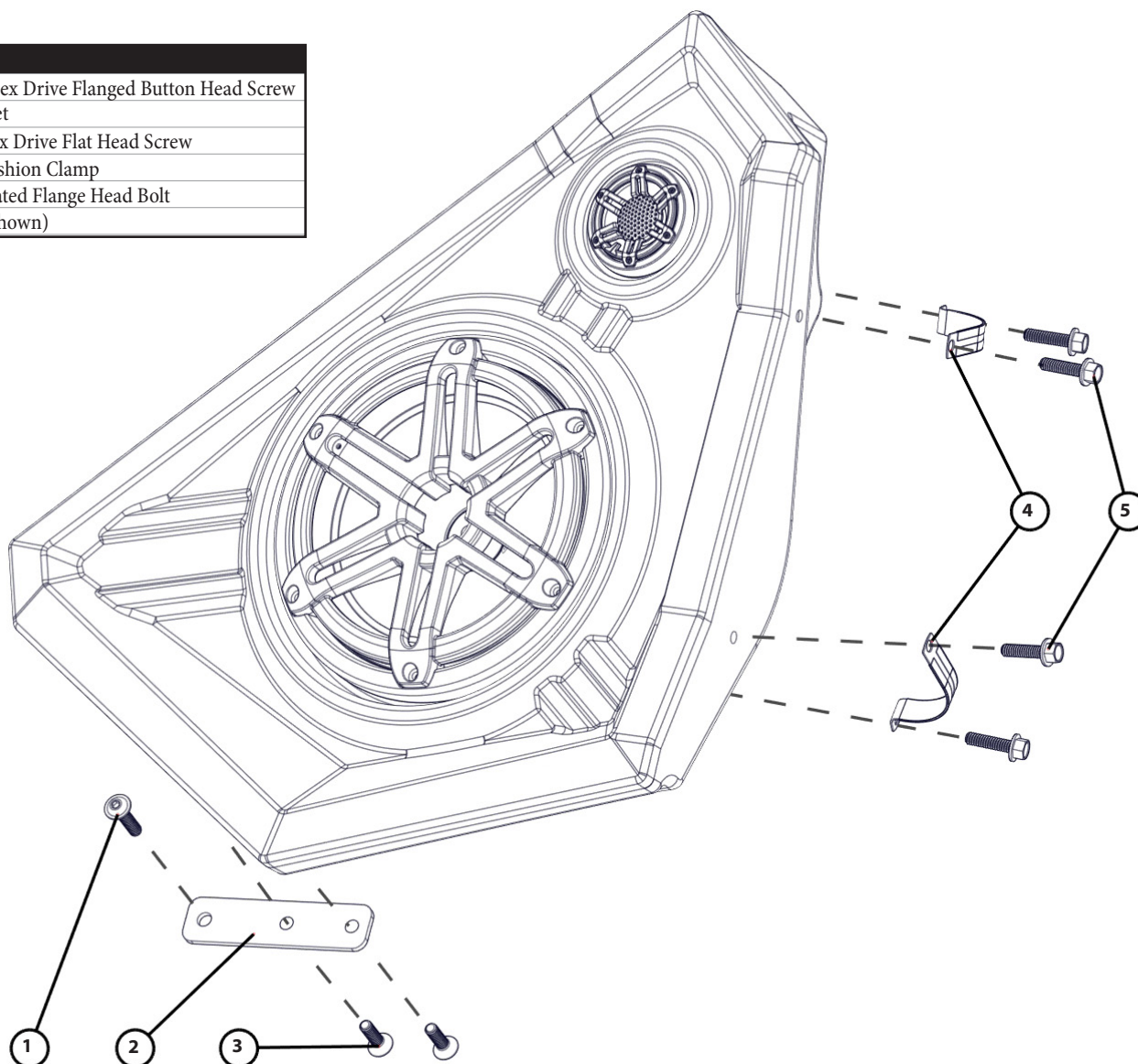
*We strongly recommend that you have your new Stealthbox® installed by your
authorized JL Audio dealer. The installation professionals employed by your
dealer have the necessary tools and experience to disassemble and reassemble
your vehicle properly. If you prefer to perform your own installation, please read
this installation guide completely before beginning the process.*

Continued on Next Page

INCLUDED HARDWARE

(hardware pictured for one)

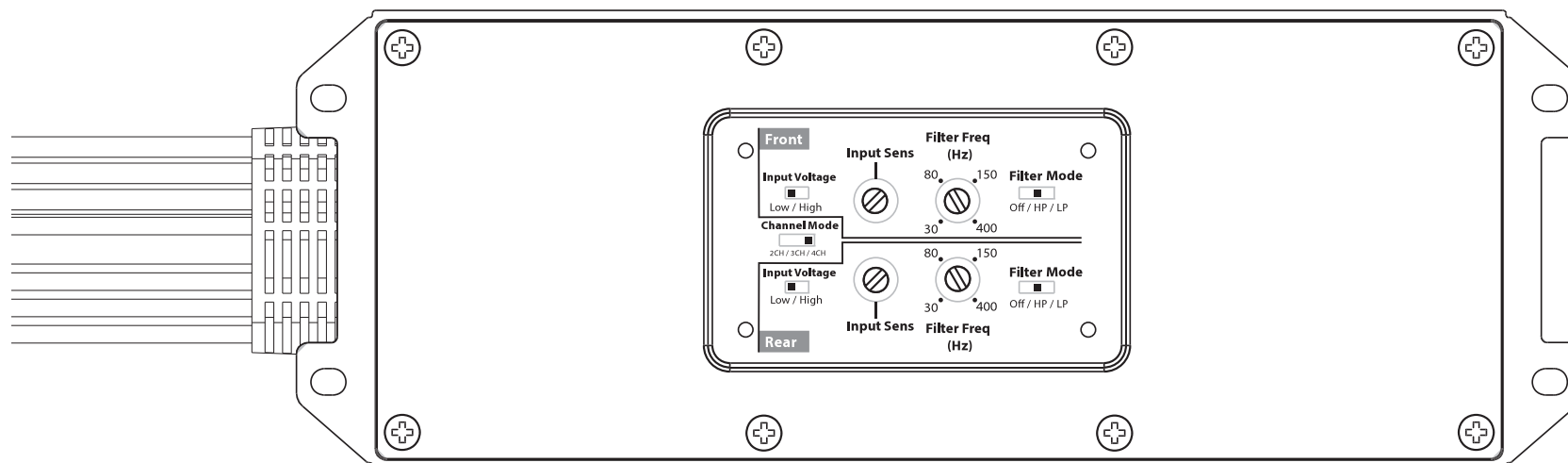
BOM ID	Qty	SKU	Description
1	2	153853	M6 - 1 x 25mm Hex Drive Flanged Button Head Screw
2	2	153846	Kick Panel Bracket
3	4	153852	1/4 - 20 x 7/8" Hex Drive Flat Head Screw
4	4	153902	Stainless Steel Cushion Clamp
5	8	153729	1/4 - 20 x 1" Serrated Flange Head Bolt
-	1	150249	Foam Tape (not shown)



Note: For optimum performance, JL Audio recommends applying the included Foam Strips (or sound damping material) to surrounding plastic panels to reduce unwanted vibrations.

POWER RECOMMENDATION

JL Audio recommends high quality amplifiers such as the JL Audio MX280/4. The diagram below shows the recommended crossover settings for the MX280/4. For a detailed description of the amplifier settings, consult the owner's manual for the amplifier. If another amplifier is being used, please reference this illustration and use similar settings on that amplifier.



CONNECTIONS

Using quality power, signal, and speaker wire is essential in ensuring the performance of your Stealthbox®. JL Audio recommends using a 4 AWG power kit such as the XD-PCS4-1B for your Stealthbox® amplifier. Other kits are available should you be using more than one amplifier. Signal wire such as the JL Audio Premium Audio Interconnect Cables should be used to provide signal for both channels of the amplifier. JL Audio recommends using 12 AWG speaker wire for subwoofers such as our XC-BCS12-25.

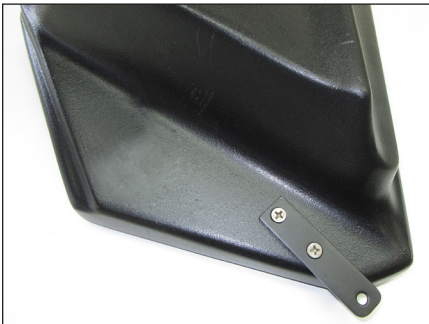
**STEP 1**

Pictured is the hardware needed for each speaker pod. The following steps show the installation procedure for the driver's side only, but the procedure is the same for both sides.

**STEP 2**

Place the speaker pod face down on a flat surface. Pass a 1/4 - 20 x 1" Serrated Flange Head Bolt through a hole in each Stainless Steel Cushion Clamp. Thread an assembly into each of the two upper threaded inserts on the side of the speaker pod, as shown.

Align the other holes in the Stainless Steel Cushion Clamps with the lower threaded inserts, and fully tighten the bolts.

**STEP 3**

Align the holes in the Kick Panel Bracket with the threaded inserts in the opposite side of the speaker pod, and secure with a pair of 1/4 - 20 x 7/8" Hex Drive Flat Head Screws.

**STEP 4**

Route speaker cable to the speaker pod location, between the two lower sections of the roll bar, as shown.

**STEP 5**

Place the speaker pod in the vehicle. Connect the speaker cable to the terminal cup on the back of the speaker pod.

**STEP 6**

Lift the speaker pod into position, wrapping the Stainless Steel Cushion Clamps around the roll bar, as shown.

**STEP 7**

Align the speaker pod with the two lower sections of the roll bar and the upper section of the roll bar, as shown.

**STEP 8**

Pass a 1/4 - 20 x 1" Serrated Flange Head Bolt through the hole in the Stainless Steel Cushion Clamp, into the threaded insert in the speaker pod. Do not fully tighten at this time.

Repeat the process for the second Stainless Steel Cushion Clamp.

**STEP 9**

Align the hole in the Kick Panel Bracket with the factory hole in the roll bar tab. Pass an M6 - 1 x 25mm Hex Drive Flanged Button Head Screw through the Kick Panel Bracket, thread it into the factory hole, and fully tighten.

Fully tighten the two 1/4 - 20 x 1" Serrated Flange Head Bolts.

**STEP 10**

Pictured is the driver's side speaker pod fully installed.

Repeat the installation process for the passenger side speaker pod.

Note: For optimum performance, we recommend applying the included Foam Strips (or sound damping material) to surrounding plastic panels to reduce unwanted vibrations.

CONGRATULATIONS!

You have completed the installation for this model! Enjoy your new Stealthbox®!

**MID/HIGH FREQUENCY DRIVER FITMENT**

SB-POL-SLINGSUBD/10W3v3 and SB-POL-SLINGSUBP/10W3v3 Stealthbox® subwoofer enclosures are also available for your vehicle. Each weatherproof enclosure is designed for a perfect fit and houses a premium JL Audio subwoofer.

SB-POL-SLINGSUBD/10W3v3
SKU# 94637 (4 Ω) & 94638 (2 Ω)

SB-POL-SLINGSUBP/10W3v3
SKU# 94639 (4 Ω) & 94640 (2 Ω)



JL AUDIO® | How we play.®    

(954) 443-1100

www.jlaudio.com

All specifications are subject to change without notice. "JL Audio" and the JL Audio logo, "Stealthbox" and the Stealthbox logo, and "How we play" are registered trademarks of JL Audio, Inc. "Ahead of the Curve" and its respective logo are trademarks of JL Audio, Inc.
Printed in USA • ©2017 JL Audio, Inc. • For more detailed information please visit us online at www.jlaudio.com.

JLA-SKU# 011484 • ver. 08.14.2017 • 10369 NORTH COMMERCE PARKWAY • MIRAMAR, FLORIDA • 33025 • USA