



! IMPORTANT

- Installation requires appropriate tools and safety equipment. Professional installation is recommended.
- If you prefer to perform your own installation, please read this installation guide completely before beginning.
- Before cutting or drilling, check for potential obstacles behind mounting surfaces.
- Mount this product securely to prevent damage or injury in severe conditions.

INSTALLATION
DIFFICULTY:

2 OUT OF 5

ESTIMATED TIME:
1 HOUR



Stealthbox®

INSTALLATION GUIDE
for the

SB-D-MGACABG4/10TW1

SKU# 94701

2006 & Up Ram Mega Cab

Enclosure Type: Sealed

Driver Type: 10TW1-4

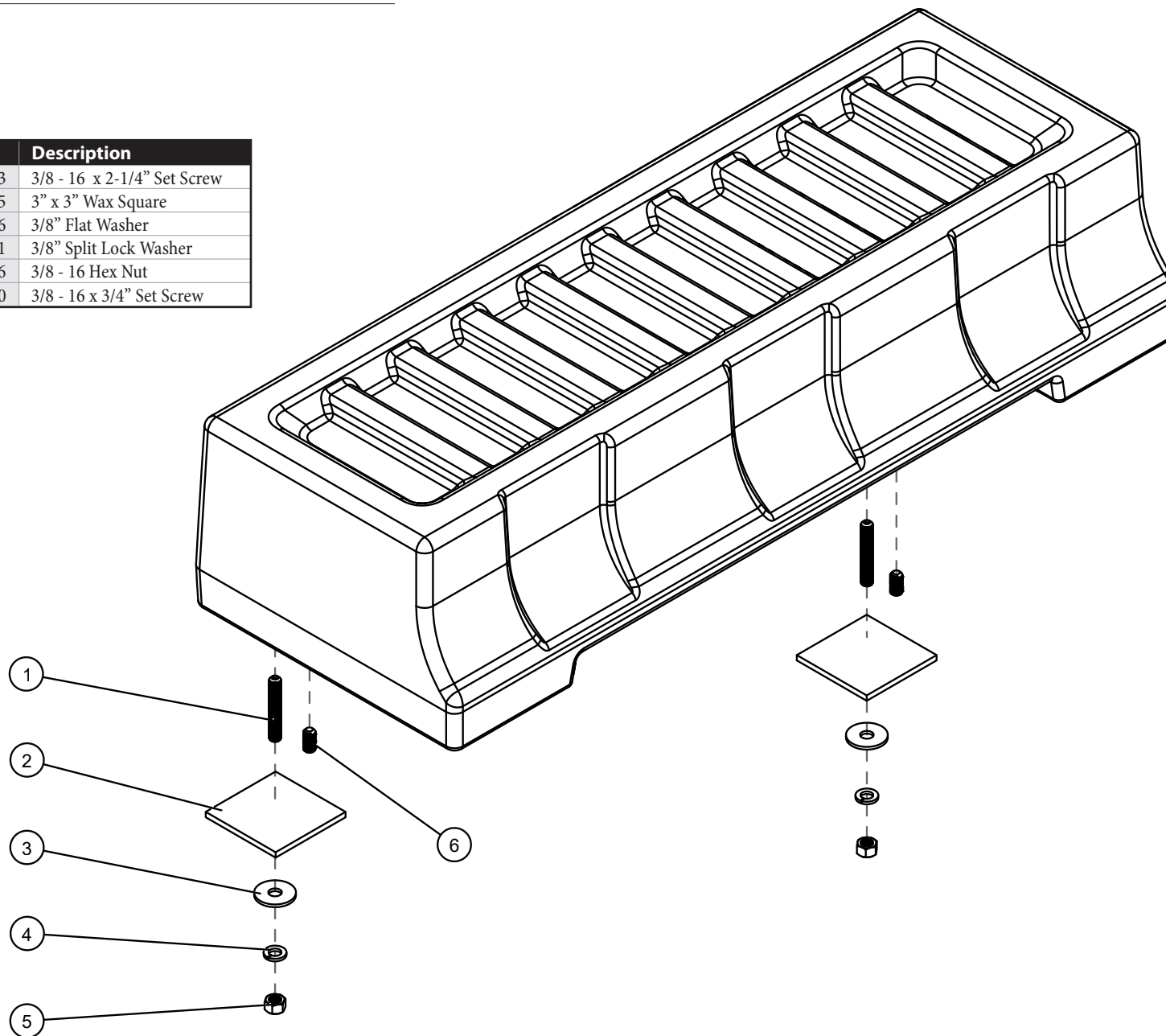
Nominal Impedance: 2 ohms

Continuous Power Handling: 600 watts (RMS method)



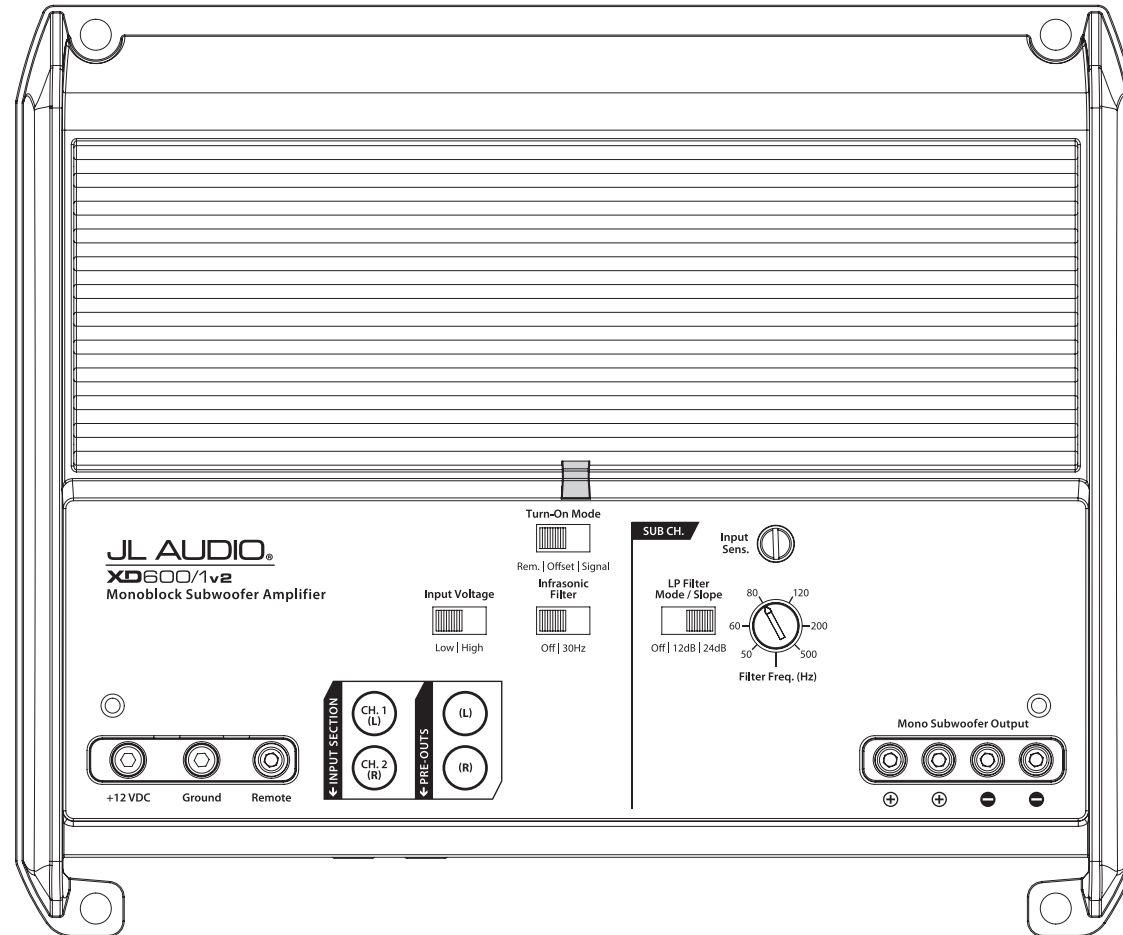
INCLUDED HARDWARE

BOM ID	Qty	SKU	Description
1	2	151383	3/8 - 16 x 2-1/4" Set Screw
2	2	151345	3" x 3" Wax Square
3	2	151126	3/8" Flat Washer
4	2	151081	3/8" Split Lock Washer
5	2	151406	3/8 - 16 Hex Nut
6	2	154470	3/8 - 16 x 3/4" Set Screw



POWER RECOMMENDATION

JL Audio recommends high quality amplifiers such as the JL Audio XD600/1v2. The diagram below shows the recommended crossover settings for the XD600/1v2. For a detailed description of the amplifier, consult the owner's manual for the amplifier. If another amplifier is being used, please reference this illustration and use similar settings on that amplifier.



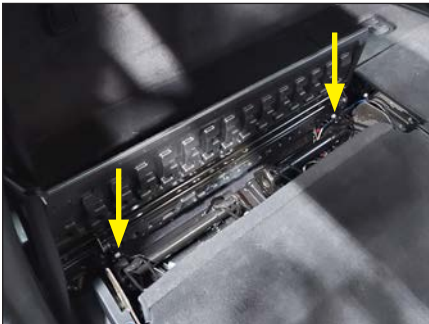
CONNECTIONS

Using quality power, signal, and speaker wire is essential in ensuring the performance of your Stealthbox®. JL Audio recommends using a 4 AWG power kit such as the XD-PCS4-1B for your Stealthbox® amplifier. Other kits are available should you be using more than one amplifier. Signal wire such as the JL Audio Premium Audio Interconnect Cables should be used to provide signal for both channels of the amplifier. JL Audio recommends using 12 AWG speaker wire for subwoofers, such as our XC-BCS12-25.

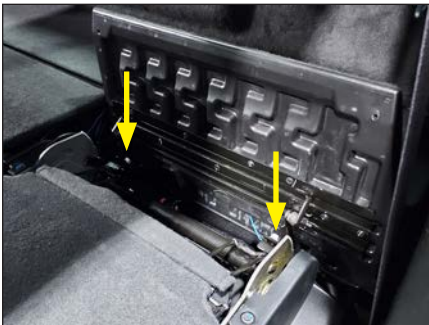
**STEP 1**

Note: This Stealthbox® can be installed behind the rear seat on the passenger side, driver side, or both. For single enclosure installations, we recommend positioning the enclosure on the passenger side of the cab.

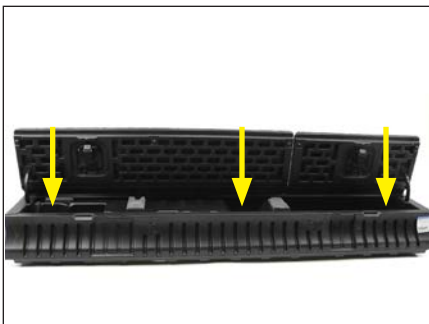
Clear the rear seat area and fold the rear seats forward.

**STEP 3**

Flip the passenger side seat gap cover panel up. Remove the two indicated factory nuts and the panel from the vehicle.

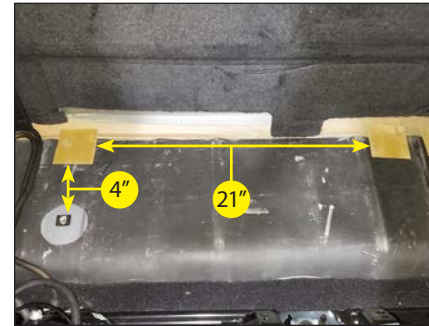
**STEP 4**

Flip the driver side seat gap cover panel up. Remove the two indicated factory nuts and the panel from the vehicle.

**STEP 5**

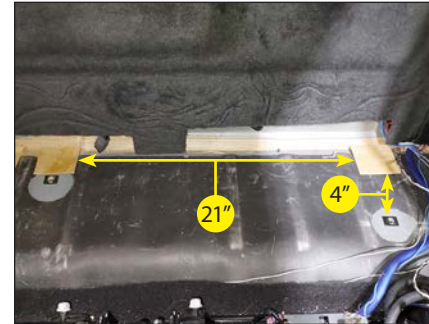
Open the rear seat storage compartment lids and remove the factory bolts from the indicated positions within the bottom interior. Remove the rear seat storage compartment from the vehicle.

Note: If equipped, the factory subwoofer harness will need to be unclipped during the rear seat storage compartment removal.

**STEP 6 (PASSENGER)**

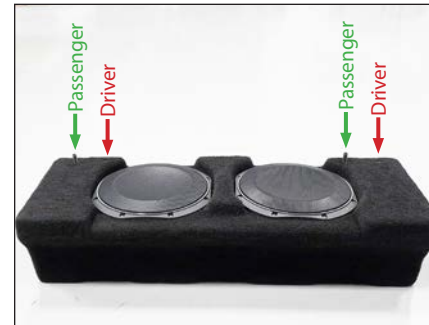
With the rear seat storage compartment removed from the vehicle, place the two supplied Wax Squares as shown.

Note: The passenger side is shown in the image. Driver side installation requires Wax Square placement shown in STEP 6 (DRIVER).

**STEP 6 (DRIVER)**

With the rear seat storage compartment removed from the vehicle, place the two supplied Wax Squares as shown.

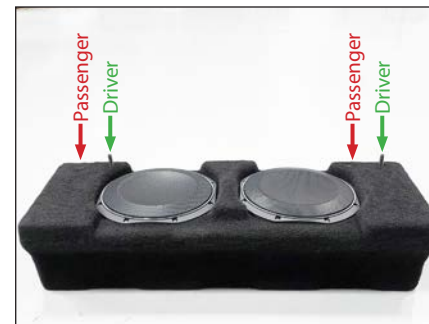
Note: The driver side is shown in the image. Passenger side installation requires Wax Square placement shown in STEP 6 (PASSENGER).

**STEP 7 (PASSENGER SIDE)**

Thread one supplied 3/8 - 16 x 2-1/4" Set Screw into each of the two Passenger (indicated) threaded inserts, leaving 1/2" of the Set Screw protruding.

Thread one supplied 3/8 - 16 x 3/4" Set Screw into each of the two Driver (indicated) threaded inserts, until flush with the surface of the enclosure.

Note: To prevent air leaks, we recommend applying teflon tape or thread sealant to all set screws.)

**STEP 7 (DRIVER SIDE)**

Thread one supplied 3/8 - 16 x 2-1/4" Set Screw into each of the two Driver (indicated) threaded inserts, leaving 1/2" of the Set Screw protruding.

Thread one supplied 3/8 - 16 x 3/4" Set Screw into each of the two Passenger (indicated) threaded inserts, until flush with the surface of the enclosure.

Note: To prevent air leaks, we recommend applying teflon tape or thread sealant to all set screws.)

**STEP 8**

Place the enclosure into the vehicle, aligning it with the rear corner of the cab with the terminal cup facing the rear wall. **(Passenger side shown).**

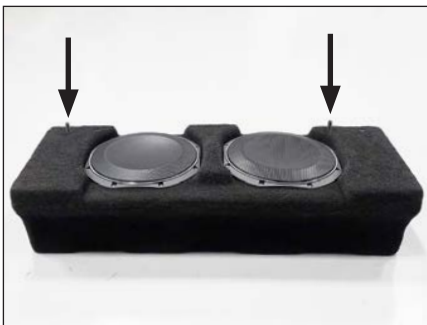
Firmly press down on the enclosure to allow the two 3/8 - 16 x 2-1/4" Set Screws installed and left protruding in **STEP 7** to leave an impression on the two Wax Squares placed in **STEP 6**.

**STEP 9**

Remove the enclosure and use a 1/8" drill bit to drill a pilot hole through the center of the impression on each Wax Square installed in **STEP 6**.

**STEP 10**

Remove the two Wax Squares from the vehicle. Use a 7/16" drill bit to enlarge the two pilot holes drilled in **STEP 9**.

**STEP 11**

Back the two 3/8 - 16 x 2-1/4" Set Screws installed in **STEP 7** out, leaving 1-1/4" length protruding from the enclosure. **(Passenger side indicated).**

**STEP 12**

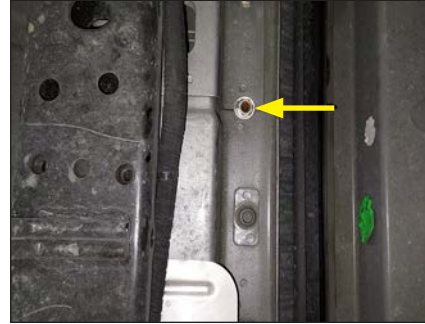
Route speaker cable from the amplifier to the Stealthbox® and connect to the enclosure's terminal cup.

Carefully place the Stealthbox® into the mounting location, allowing the two protruding 3/8 - 16 x 2-1/4" Set Screws to pass through the holes drilled in the floor in **STEP 10**.

**STEP 13**

From underneath the vehicle, locate one of the two 3/8 - 16 x 2-1/4" Set Screws passed through the floor of the vehicle in **STEP 12**.

Referring to **Page 2** as a guide, use one supplied 3/8" Flat Washer, one 3/8" Split Lock Washer, and one 3/8 - 16 Hex Nut to attach the Stealthbox® to the vehicle. Fully tighten the 3/8 - 16 Hex Nut.

**STEP 14**

From underneath the vehicle, locate the second of the two 3/8 - 16 x 2-1/4" Set Screws passed through the floor of the vehicle in **STEP 12**.

Referring to **Page 2** as a guide, use one supplied 3/8" Flat Washer, one 3/8" Split Lock Washer, and one 3/8 - 16 Hex Nut to attach the Stealthbox® to the vehicle. Fully tighten the 3/8 - 16 Hex Nut.

**STEP 15**

Reinstall the factory driver and passenger rear seat gap cover panels.

**STEP 16**

Fold the rear seats up.

CONGRATULATIONS!

You have completed the installation for this model! Enjoy your new Stealthbox®!

**MID/HIGH FREQUENCY DRIVER FITMENT**

A variety of JL Audio coaxial and component systems will fit in the factory speaker locations of your vehicle.

Location / OEM Speaker Size	Suggested JL Audio Speaker Models	
	Coaxial Models	Component Models
Front Doors / 6 x 9-inch	C1-690x ⁽¹⁾ , C1-690tx ⁽¹⁾ , C2-690tx ⁽¹⁾ C2-650x ⁽¹⁾ , C5-650x ⁽¹⁾	C1-690 ⁽¹⁾ , C1-650 ⁽¹⁾ , C2-650 ⁽¹⁾ , C3-650 ⁽¹⁾ , C5-650 ⁽¹⁾ , C7-650cw ^(1,2)
Rear Doors / 6 x 9-inch	C1-690x ⁽¹⁾ , C1-690tx ⁽¹⁾ , C2-690tx ⁽¹⁾ C2-650x ⁽¹⁾ , C5-650x ⁽¹⁾	C1-690 ⁽¹⁾ , C1-650 ⁽¹⁾ , C2-650 ⁽¹⁾ , C3-650 ⁽¹⁾ , C5-650 ⁽¹⁾ , C7-650cw ^(1,2)

1 - Installation may require adaptor, 2 - Component woofer only

JL AUDIO® | How we play.®    

(954) 443-1100

www.jlaudio.com

All specifications are subject to change without notice. "JL Audio" and "How we play" are registered trademarks of JL Audio, Inc. "Ahead of the Curve" and its respective logo are trademarks of JL Audio, Inc.

Printed in USA • ©2022 JL Audio, Inc. • For more detailed information please visit us online at www.jlaudio.com.

JLA-SKU# 011577 • ver. 11.15.22 • 10369 NORTH COMMERCE PARKWAY • MIRAMAR, FLORIDA • 33025 • USA



011577