



Head of the Curve®



Stealthbox®

INSTALLATION GUIDE
for the

SB-T-4RNRG5/10TW3

SKU# 94685

2010 & Up Toyota 4Runner

Enclosure Type: Sealed

Driver Type: 10TW3-D4

Nominal Impedance: 2 ohms

Continuous Power Handling: 400 watts (RMS method)

SB-T-4RNRG5/10TW3 INSTR_SKU# 011555

! IMPORTANT

- Installation requires appropriate tools and safety equipment. Professional installation is recommended.
- If you prefer to perform your own installation, please read this installation guide completely before beginning.
- Before cutting or drilling, check for potential obstacles behind mounting surfaces.
- Mount this product securely to prevent damage or injury in severe conditions.

INSTALLATION
DIFFICULTY:

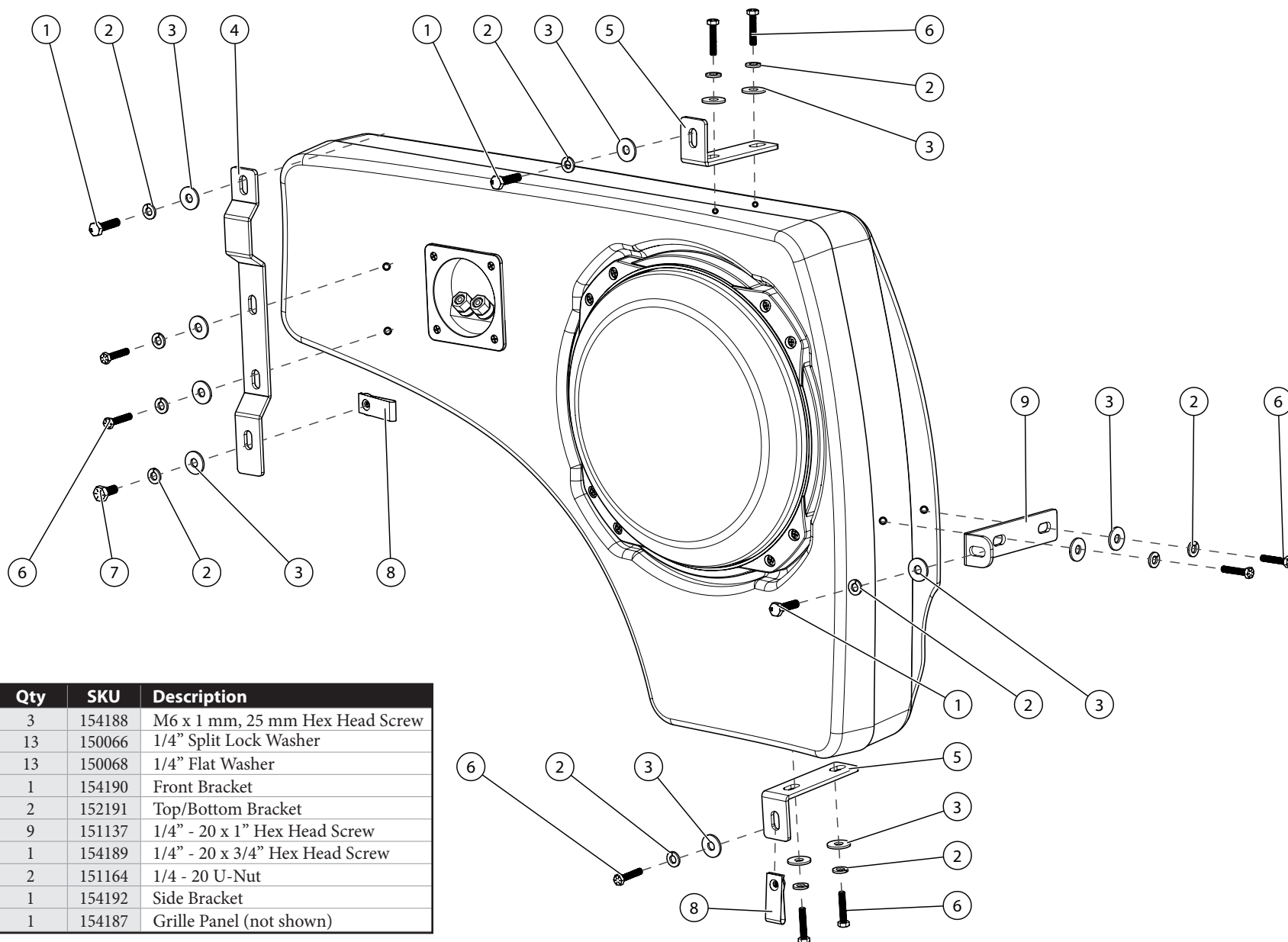
3 OUT OF 5

ESTIMATED TIME:
2 HOURS



Continued on Next Page

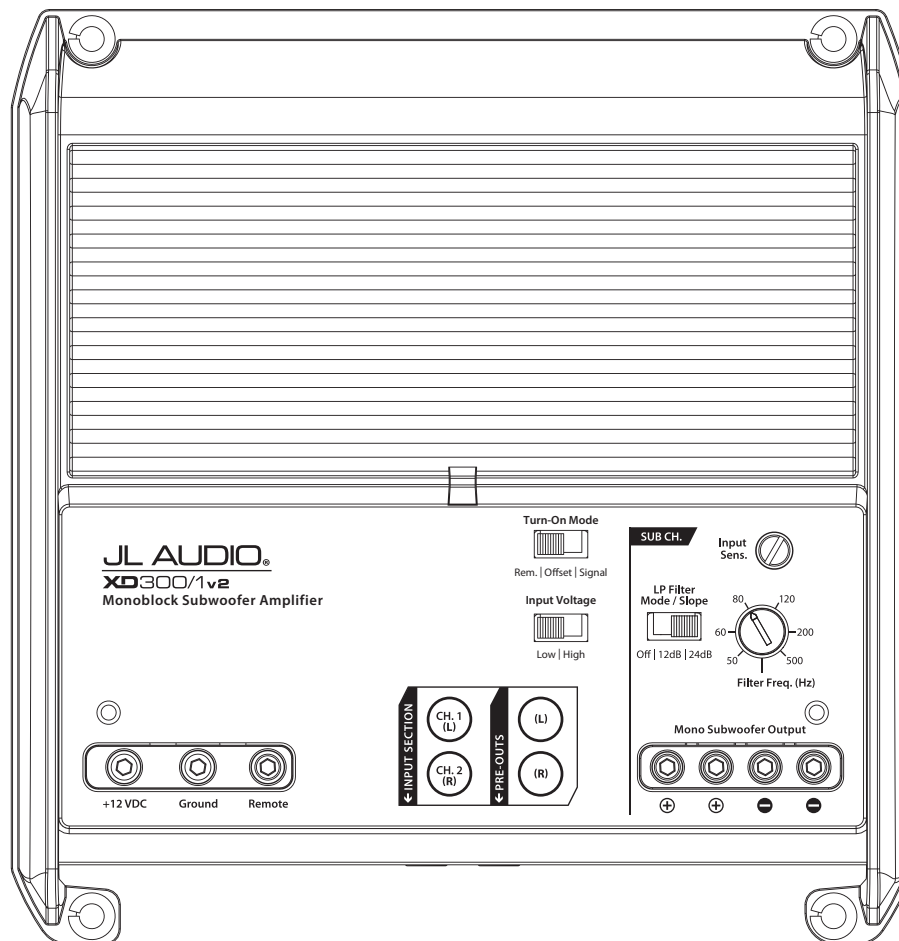
INCLUDED HARDWARE



BOM ID	Qty	SKU	Description
1	3	154188	M6 x 1 mm, 25 mm Hex Head Screw
2	13	150066	1/4" Split Lock Washer
3	13	150068	1/4" Flat Washer
4	1	154190	Front Bracket
5	2	152191	Top/Bottom Bracket
6	9	151137	1/4" - 20 x 1" Hex Head Screw
7	1	154189	1/4" - 20 x 3/4" Hex Head Screw
8	2	151164	1/4 - 20 U-Nut
9	1	154192	Side Bracket
10	1	154187	Grille Panel (not shown)

POWER RECOMMENDATION

JL Audio recommends high quality amplifiers such as the JL Audio XD300/1v2. The diagram below shows the recommended crossover settings for the XD300/1v2. For a detailed description of the amplifier settings, consult the owner's manual for the amplifier. If another amplifier is being used, please reference this illustration and use similar settings on that amplifier.



CONNECTIONS

Using quality power, signal, and speaker wire is essential in ensuring the performance of your Stealthbox®. JL Audio recommends using a 4 AWG power kit such as the XD-PCS4-1B for your Stealthbox® amplifier. Other kits are available should you be using more than one amplifier. Signal wire such as the JL Audio Premium Audio Interconnect Cables should be used to provide signal for both channels of the amplifier. JL Audio recommends using 12 AWG speaker wire for subwoofers such as our XC-BCS12-25.



STEP 1

Clear the rear cargo area.



STEP 2

Carefully unclip and remove the center cargo door sill panel.



STEP 3

Open the indicated plastic cover and remove the exposed 10 mm bolt.



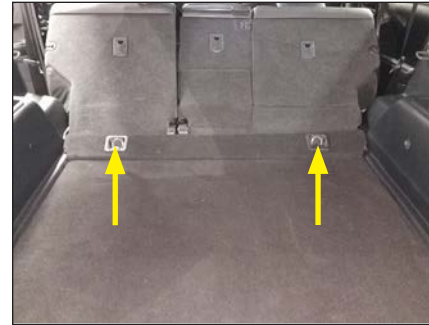
STEP 4

Turn the cargo net retaining hook clockwise to release and remove the hook. Remove the exposed Phillips screw.



STEP 5

Use a panel removal tool to remove the two indicated trim covers. Remove the two exposed 10 mm bolts.



STEP 6

Open the two indicated plastic covers and remove the two exposed 10 mm bolts.



STEP 7

Remove the lower rear seat carpeted trim panel from the vehicle.



STEP 8

Carefully unclip and remove the carpeted floor panel. There are four (4) clips that secure the floor panel to the vehicle.

Lift and remove the exposed Styrofoam subfloor panel.

Remove the single exposed Phillips screw from the location indicated on the floor.

**STEP 9**

Use a panel removal tool to carefully remove the passenger rear seat recline lever assembly. The lever assembly must be pried towards the center of the vehicle to remove.

**STEP 10**

After removing the passenger rear seat recline lever assembly, disconnect the metal pull cable from the back of the handle.

**STEP 11**

Remove the two exposed 10 mm bolts.

**STEP 12**

Open the plastic cover over the seat belt bolt and remove the exposed 14 mm bolt.

**STEP 13**

Flip the carpeted flap at the bottom of the rear seat forward and remove the exposed 14 mm bolt.

**STEP 14**

With the passenger rear seat back upright, remove the indicated 14 mm bolt.

**STEP 15**

From behind the rear passenger seat, remove the indicated 14 mm bolt and move the rear passenger seat back aside.

**STEP 16**

Carefully unclip and remove the rear passenger side door sill trim panel.

**STEP 17**

Lift the weatherstripping from the rear edge of the OEM rear panel.

Carefully unclip the OEM rear panel and remove it from the vehicle.

**STEP 18**

From the rear of the OEM rear panel, disconnect the power harnesses from the AC and DC power sockets.

Remove the OEM rear panel from the vehicle.

**STEP 19**

Use a tool to cut the OEM plastic leg where indicated by the yellow circle in the image.

Install one of the supplied 1/4 - 20 U-Nuts onto the exposed OEM metal mounting tab.

**STEP 20**

Slide a 1/4" Split Lock Washer and a 1/4" Flat Washer over each of six 1/4" - 20 x 1" Hex Head Screws. Referring to **Page 2** as a guide, use two assemblies per Bracket to attach the Top Bracket, Bottom Bracket, and Side Bracket to the Stealthbox®. Center each assembly in the Bracket Slots, then fully tighten them into the Stealthbox® threaded inserts. Install one 1/4 - 20 U-Nut onto the Bottom Bracket as indicated.

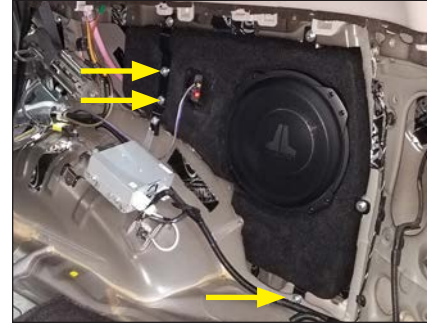
**STEP 21**

Starting from the bottom of the opening, insert the Stealthbox® into the mounting location, aligning each Bracket to the OEM metal mounting points.

The Bottom Bracket sits behind the OEM bottom metal mounting point, whereas the other mounting brackets will sit in front of the remaining OEM metal mounting points.

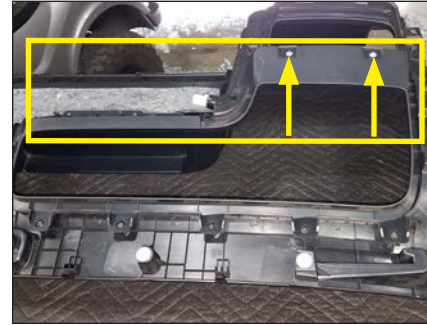
**STEP 22**

Slide a 1/4" Split Lock Washer and a 1/4" Flat Washer over each of three M6 x 1mm, 25mm Hex Head Screws. Use these assemblies to secure the top hole of the Front Bracket, the Top Bracket, and the Side Bracket to the OEM metal mounting points. Slide a 1/4" Split Lock Washer and a 1/4" Flat Washer over one 1/4" - 20 x 3/4" Hex Head Screw and use it to secure the bottom hole of the Front Bracket to the OEM metal mounting point.

**STEP 23**

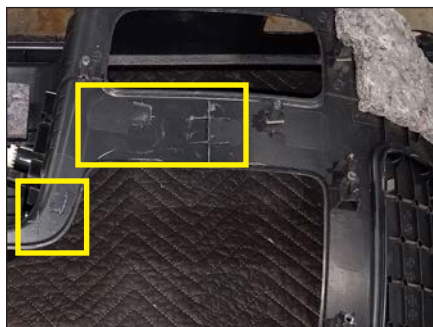
Slide a 1/4" Split Lock Washer and a 1/4" Flat Washer over each of three 1/4" - 20 x 1" Hex Head Screws. Use these assemblies to secure the Front Bracket to the threaded holes on the Stealthbox® and the Bottom Bracket to the OEM metal mounting point.

Route the speaker cable and connect to the terminal cup on the Stealthbox®.

**STEP 24**

Flip the OEM rear panel over and lay it on a flat surface. Use a screwdriver to remove the 15 Phillips screws around the perimeter of the cargo pocket. Remove the cargo pocket from the panel.

After removing the cargo pocket, use a screwdriver to remove the two indicated Phillips screws, then remove the indicated trim piece from the rear of the panel.

**STEP 25**

Remove the plastic protrusions from the back of the OEM rear panel within the indicated areas.

(Note: The plastic protrusions have already been removed in this image.)

**STEP 26**

Place the Stealthbox® Grille Panel over the panel opening with the grille cloth facing down. Use a screwdriver to hand tighten 14 of the Phillips screws removed in **STEP 20** around the Grille Panel's perimeter.

After hand tightening the screws, work back around the perimeter of the Grille Panel and fully tighten each screw. Do not overtighten the screws.

**STEP 27**

Reinstall the OEM rear panel.

**STEP 28**

Reinstall the remainder of the OEM panels and parts.

CONGRATULATIONS!

You have completed the installation for this model! Enjoy your new Stealthbox®!

**MID/HIGH FREQUENCY DRIVER FITMENT**

A variety of JL Audio coaxial and component systems will fit in the factory speaker locations of your vehicle.

Location / OEM Speaker Size	Suggested JL Audio Speaker Models	
	Coaxial Models	Component Models
Front Doors / 6 x 9-inch	C1-690x ⁽¹⁾ , C1-690tx ⁽¹⁾ , C2-690tx ⁽¹⁾ C2-650x ⁽¹⁾ , C5-650x ⁽¹⁾	C1-690 ⁽¹⁾ , C1-650 ⁽¹⁾ , C2-650 ⁽¹⁾ , C3-650 ⁽¹⁾ , C5-650 ⁽¹⁾ , C7-650cw ^(1,2)
Rear Doors / 6.5-inch	C1-650x, C2-650x, C5-650x	C1-650, C2-650, C3-650, C5-650, C7-650cw ⁽²⁾

1 - Installation may require adaptor, 2 - Component woofer only

JL AUDIO | How we play.®    

(954) 443-1100

www.jlaudio.com

All specifications are subject to change without notice. "JL Audio" and "How we play" are registered trademarks of JL Audio, Inc. "Ahead of the Curve" and its respective logo are trademarks of JL Audio, Inc.
Printed in USA • ©2021 JL Audio, Inc. • For more detailed information please visit us online at www.jlaudio.com.

JLA-SKU# 011489 • ver. 10.12.2021 • 10369 NORTH COMMERCE PARKWAY • MIRAMAR, FLORIDA • 33025 • USA



011555