

Installation Instructions

Description:	700 watt six speaker STAGE 6 audio system for 2016 - 2023 Toyota Tacoma (Third Generation)
Part Number:	MBTAC-STG6A-OEM, MBTAC-STG6A-16-19, MBTAC-STG6A-20-23
Assembly Time:	240 Min (4-Hours)

It is always best practice to disconnect your negative battery terminal prior to any electronics installations to avoid damaging the vehicles electrical system. Before you begin, read through these instructions and check that all parts are present.

This installation may require special skills and tools to complete, it may be necessary to seek a trained installation technician to complete this installation. Please note that MB Quart cannot assume any responsibility for damage resulting from incorrect installation.

TS1-2810 Parts List		
No.	Component Name	Qty
1	TS1-2810 8x10" Component Speaker System	1
2	TC1-118 7" Coaxial Speaker System	1
3	RA1-710.5-1 5 Channel Amplifier	1
4	MBTAC-ACC-1 Accessory Kit	1
5	MBTAC-NA-LOC LOC Kit (Only with MBTAC-STG6A-OEM)	1
6	AP4-TY12 Integration Module (Only with MBTAC-STG6A-16-19)	1
7	P4-TY13 R.2 Integration Module (Only with the MBTAC-STG6A-20-23)	1

Tools Required (May Vary on Application)	
1	Bojo or Panel Tool
2	Philips Screwdriver
3	10mm, 12mm, 14mm Socket
4	Ratchet
5	2.5mm Allen Wrench
6	10mm Open Box Wrench
7	1.5" Hole Saw
8	Drill
9	Flush Trim Wire Cutters

OEM Speaker Removal

- Remove the front door top trim by carefully prying with a panel tool.



- Carefully push in the center of the push pin to release the clip and remove.



- Remove the fabric panel in the hand pull pocket.
- Remove the Philips screw at the bottom of the pocket.



OEM Speaker Removal

- Using a panel tool remove the cover behind the door latch.
- Remove the Philips screw at the back of the door latch.



- Using a panel tool remove the door switches.
- Then unclip wiring from the switch assembly.



- Starting at the bottom of the door using a panel tool carefully unclip the inner door panel.
- Disconnect the lock and door latch cables from the back of the door panel. Set the door panel aside in a safe location.



OEM Speaker Removal

- Start by disconnecting the speaker wire connector by depressing the pressure tab to release the locking clip. Then, slide the connector out from the speaker basket.
- With the speaker wires removed, you can now remove the (4) 10mm bolts attaching your speakers to the door. Then remove the speaker from the door.



TS1-2810 Door Speaker Install

- To install your speaker, place the speaker into the OEM speaker cut out, and secure it with the previously removed 10mm bolts.
- Next reconnect the OEM speaker wire connector into the correct receptacle on the speaker's basket.

Tech Tip: With your speaker removed, now is a great time to apply sound dampening material around your speaker.



- Now your new speaker is installed, and you can reinstall your door panel in the reverse order.
- Once the door panel is reinstalled. Be sure to test all your window, locks, and door handle functionality. Then repeat on the opposite door.



OEM Dash Speaker Removal

- Using a panel tool pry out the SRS Airbag cover to expose (1) 10mm bolt to remove.



- Pull out on the top of the A-pillar and then pull back toward the rear of the vehicle to remove the panel.



- Remove the top dash speaker cover, in some vehicles it may be necessary to remove the A-pillar panel as well.
- Once the speaker cover is removed place it aside in a safe location.



OEM Dash Speaker Removal

- Remove the (2) 10mm bolt securing the speaker into the top of the dash.
- Disconnect the speaker wire connector from the speaker by depressing the pressure tab releasing the connector locking clip and slide the connector off the speaker.



TS1-2810 Dash Tweeter Install

- On the tweeter plate you will notice a “J” and “T”. You will need to remove the “J” sections.

Tech Tip: Using a Razor or knife to score the relief groove may assist in a smoother break along the groove.



- With your speaker plate modified to your application, it is time to install the tweeter into the plate. Line up the locking tabs on the tweeter with the cut outs on the inner tweeter hole of the plate, and firmly press it into the plate with the palm of your hand.



- Connect the tweeter wires to the crossover.
- Complete the wiring portion by matching up your OEM speaker wire with the correct connector of the (3) provided on the supplied cross over pigtail.



TS1-2810 Dash Tweeter Install

- Lastly, place all the wires into the speaker cavity and place the tweeter and mounting brackets onto the dash. Line up the 2 mounting holes and secure the new speaker with the OEM 10mm bolt.
- Your new dash speakers are now installed. And you can re assemble your dash in reverse order of how it was taken apart.



OEM Speaker Removal

- Remove the door window trim by carefully prying with a panel tool.



- Carefully push in the center of the push pin to release the clip and remove.



- Using a panel tool remove the cover behind the door latch.
- Remove the Philips screw at the back of the door latch.



OEM Speaker Removal

- Remove the fabric panel in the hand pull pocket.
- Remove the Philips screw at the bottom of the pocket.



- Using a panel tool remove the door switches.
- Then unclip wiring from the switch assembly.



- Starting at the bottom of the door using a panel tool carefully unclip the inner door panel.
- Disconnect the lock and door latch cables from the back of the door panel. Set the door panel aside in a safe location.



OEM Speaker Removal

- Start by disconnecting the speaker wire connector by depressing the pressure tab to release the locking clip. Then, slide the connector out from the speaker basket.
- With the speaker wires removed, you can now remove the (3) 10mm bolts attaching your speakers to the door. Then remove the speaker from the door.



TC1-118 Door Speaker Install

- Some vehicles may require the supplied connector gender adapter harness.



- To install your speaker, place the speaker into the OEM speaker cut out, and secure it with the previously removed 10mm bolts.
- Next reconnect the OEM speaker wire connector into the correct receptacle on the speaker's basket.

Tech Tip: With your speaker removed, now is a great time to apply sound dampening material around your speaker.



- Now your new speaker is officially installed, and you can reinstall your door panel. Once the door panel is reinstalled. Be sure to test all your window, locks, and door handle functionality.



Vehicle Disassembly

- Remove the radio trim by carefully prying with a panel tool. Then remove from the vehicle.



- Remove (4) 10mm bolts holding the radio to the dash.



- Gently lift up the front driver side door sill. Then remove from vehicle.



Vehicle Disassembly

- Remove plastic nut from driver kick panel
- Then gently unclip the driver kick panel and remove from vehicle.



- Gently lift up the rear driver side door sill. Then remove from vehicle.



- Unclip the sides of the driver seat belt cover. Then remove the (1) 14mm bolt.



Vehicle Disassembly

- Repeat the last four steps on the passenger side of the vehicle.



- Flip rear seat bottom up.



- Remove (3) headrests from rear seat.



Vehicle Disassembly

- Flip seat backs down.



- Using a panel tool remove the (2) covers on the driver side rear seat back.



- Using a 14mm ratchet, remove (2) bolts from the driver side rear seat back. Then remove from vehicle.



Vehicle Disassembly

- On passenger side rear seat remove (1) bolt from the middle seat belt with a 14mm ratchet.



- Using a panel tool remove the (2) cover on the passenger side rear seat.
- Then remove (2) bolts using a 14mm ratchet. Carefully remove seat back from vehicle.



- Remove (2) bolts on driver side rear panel using a 10mm ratchet. Then remove from vehicle.



Vehicle Disassembly

- Remove (2 or 3) bolts on passenger side rear panel using a 10mm ratchet depending on vehicle trim. Then remove from Vehicle.

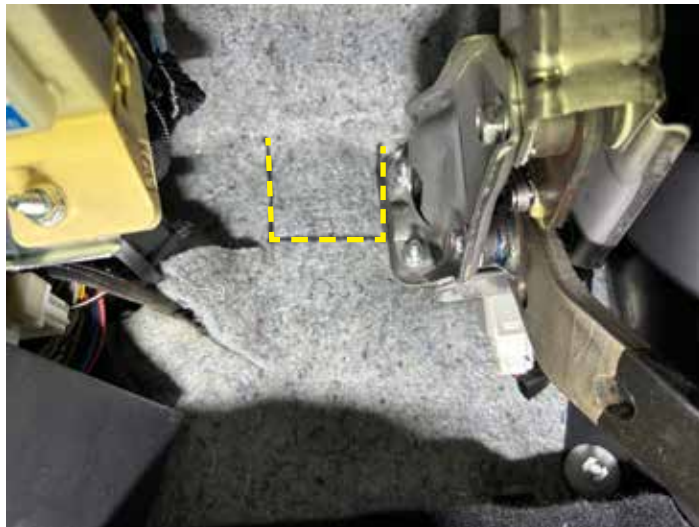


Harnessing Installation

- Under the hood on the driver side behind the brake reservoir, remove the grommet from the firewall.



- On the inside driver side firewall near the brake pedal support, cut the matting where marked by the yellow dashed lines using a utility knife.



- Remove the 70A Maxi fuse from the fuse holder on the power wire.



Harnessing Installation

- Slide the grommet down the power wire as this will help installing into the firewall.



- Pass the power wire through the firewall and install the grommet. Then slowly feed the wire till the grommet is back onto the sleeve.



- Route the power wire through the battery terminal cover. Attach to the positive terminal using a 12mm ratchet.



Harnessing Installation

- Route the power wire down the driver side wire channel along the OEM harnessing.



- Route the power wire under the B Pillar moving toward the driver side rear sill area.



- Route the power wire down the driver side rear wire channel along the OEM harnessing toward the rear cabin wall.



Harnessing Installation

- Remove the headunit from the dash.



- **For vehicles 2017 to 2019 with no factory amplifier.** You will be using this harness behind the radio. If you have the OEM radio then connect the LOC module to the harness. If you have an aftermarket headunit you will not use the LOC.



Harnessing Installation

- For vehicles 2020 to 2023 with no factory amplifier. You will be using this harness behind the radio.



- Also for vehicles 2020 to 2023 with no factory amplifier. You will be using this harness inline with the LOC. If you have an aftermarket headunit you will not use the LOC or this harness.

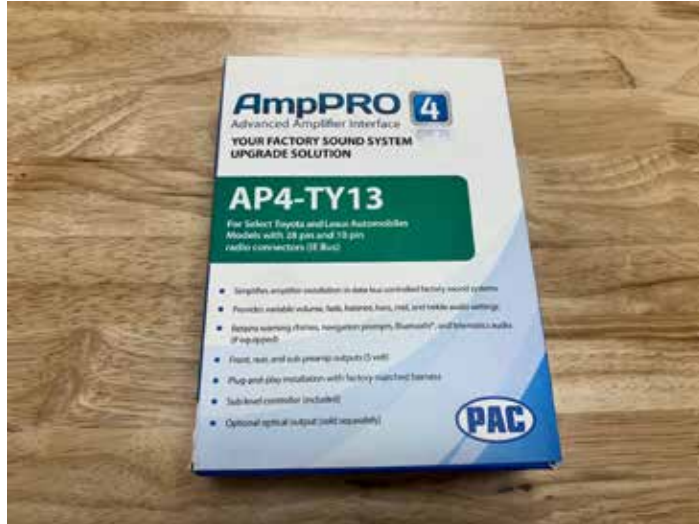


Harnessing Installation

- If you have the OEM headunit and is factory amplified you will install the correct PAC Audio interface behind the radio.

2017 - 2019 uses AP4-TY12

2020 - 2023 uses AP4-TY13 R.2



- Connect the RCAs to the LOC, PAC module or aftermarket headunit. Then pass them from the radio area to the passenger floor area. If you are using the LOC then you will only connect front and rear RCAs to the module and one of the sub RCA to the T-harness before the LOC.



- Connect the blue remote wire to the T-Harness, PAC module or aftermarket headunit. Then pass from the radio area to the passenger floor area. On '20-'23 non-JBL amplified vehicles, you will not connect the REM wire.



Harnessing Installation

- If you are using the LOC or have an aftermarket headunit. Connect the speaker extension harness to the T-Harness and then pass from the radio area to passenger floor area.



- Route harnesses down the passenger front door sill along the OEM wiring.
- Then continue routing underneath the B Pillar toward the passenger rear door sill.



- Route the harnesses down the passenger rear door sill along the OEM harnessing and continuing toward the vehicles rear wall.



Harnessing Installation

- Route harnesses on the passenger side along the rear wall toward the driver side if you don't have the factory amplifier.
- If you have the factory amplifier, please skip to the next page.



- Connect the short pig tail harness to the speaker extension harness and continue routing to the driver side.



- Re-install the passenger side rear panel into the vehicle.

Note

If you are planning on installing the MB Quart Tacoma subwoofer enclosure, please reference that install manual now.



Harnessing Installation (Factory Amp Integration)

- If your vehicle is equipped with the factory amplifier and subwoofer. You will need to unbolt the enclosure using a 10mm ratchet.
- Then pass the RCAs and remote turn on wire behind the enclosure toward the driver side.



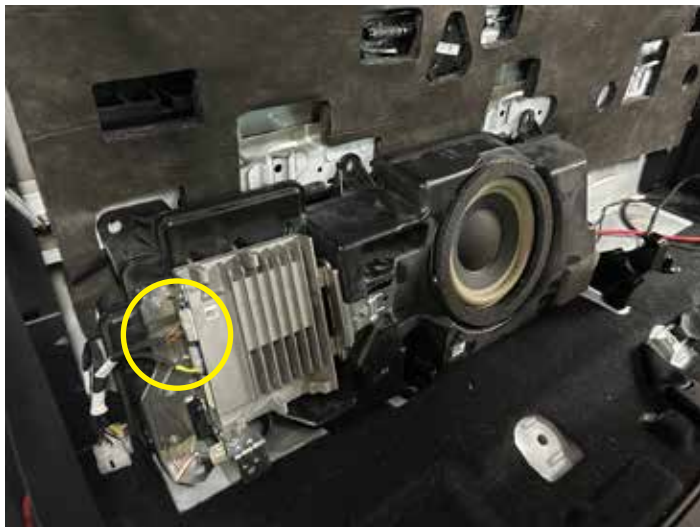
- Connect the short pig tail harness to the OEM amplifier T-harness.



- Connect the T-harness in between the appropriate harnesses on the OEM amplifier.
- Then pass this harness behind the subwoofer enclosure toward the driver side. You can now resecure the enclosure and reinstall the passenger side rear panel.

Note

If you are planning on installing the MB Quart Tacoma subwoofer enclosure, please reference the install manual now.



Amplifier Installation

- On the middle seat bracket remove the back driver side bolt using a 12mm ratchet. Then insert the ground wire ring terminal on the power harness and reinstall the bolt with the 12mm ratchet.



- Unclip the locking retainer on the power connector by carefully lifting the release tabs on both sides of the connector.
- Slide the power wire into the open cavity till it is fully seated. Then insert the locking retainer back on the connector.



- Connect blue remote wire from the front of the vehicle to the power harness at the bullet connectors.



Amplifier Installation

- Drill a 1.5" hole in the bottom inner corner of the driver side rear panel like pictured.



- Pass RCAs, power harness and speaker harness through the hole in the pocket.
- Reinstall the driver side rear panel back into place. Do not install the (2) OEM bolts.



- Align the amplifier plate to the OEM factory holes. Using the new hardware provided (2) M6 x 45mm hex bolts and (2) M6 flat washers secure the amplifier plate to the vehicle.



Amplifier Installation

- Connect the power harness and speaker harness to the RA1-710.5-1 amplifier.
- Slide the bottom amplifier feet into the groove on the amplifier plate. Then secure the amplifier on the top with (2) M4 x 10mm Philips screws and (2) M4 flat washers.



- Connect the RCAs to the amplifier in the following order:
Front Black RCA to Channel 1
Front Red RCA to Channel 2
Rear Black RCA to Channel 3
Rear Red RCA to Channel 4
Sub Black RCA to Channel 5
Sub Red RCA to Channel 5



- Fish excess wiring back into the hole in the bottom of the pocket. Then install the supplied techflex wire covering over the wires in the bottom of the pocket.



Amplifier Installation

- Install the 70A Maxi fuse into the fuse holder under the hood.



- Remove the (4) screws on the amplifier controls cover using a M4 allen wrench.
- Go to the next page for tuning recommendations.

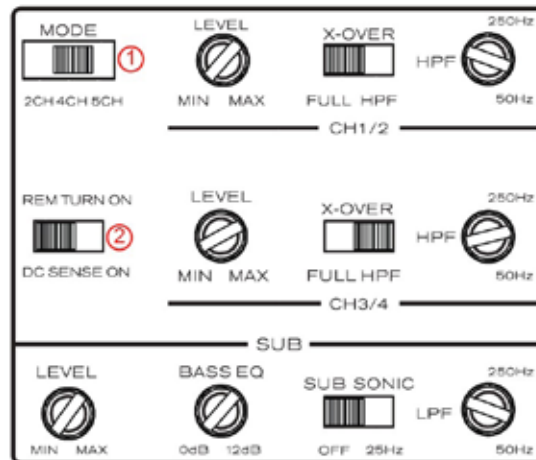


- Reinstall the vehicle panels in the reverse order that it was disassembled.
- Enjoy your MB Quart Toyota Tacoma tuned audio system.

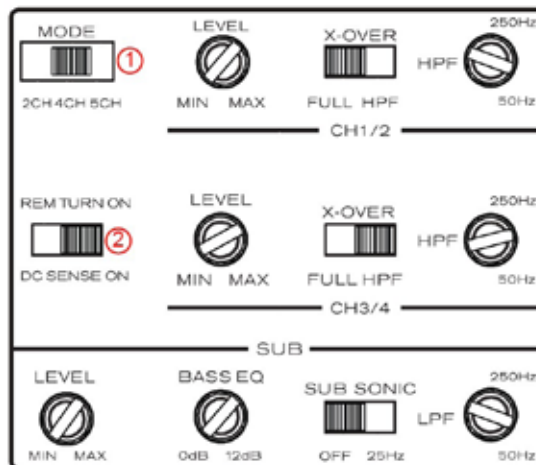


Amplifier Tuning

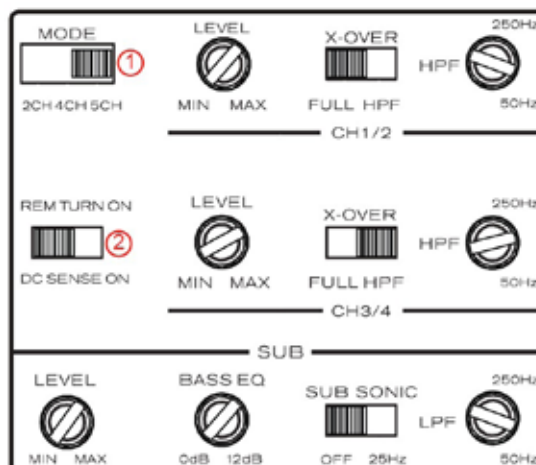
- For 2017 - 2019 OEM headunit using the LOC, you will want to set the #1 and #2 switches as pictured.



- For 2020 - 2023 OEM headunit using the LOC, you will want to set the #1 and #2 switches as pictured.



- For any vehicle with aftermarket headunit or with OEM headunit that is amplified using the PAC Audio interface, you will want to set the #1 and #2 switches as pictured.



Amplifier Tuning

First, make sure all levels are turned counter-clockwise until it won't turn anymore. This would be around the 7 o'clock position on a clock face. We will use this analogy to set all of the knobs moving forward

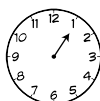
1. On CH1/2, turn your level clockwise until it gets to the 1 o'clock position.



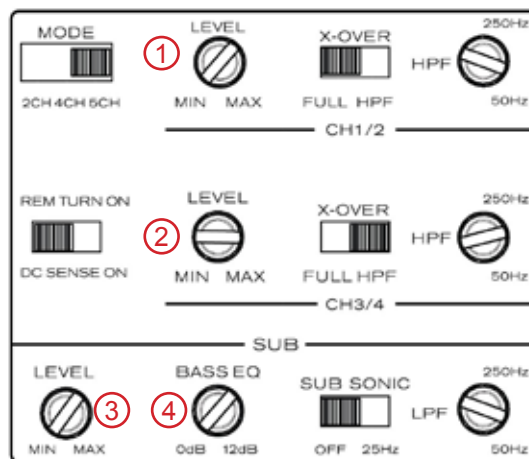
2. On CH3/4, turn your level clockwise until it gets to the 2 o'clock position.



3. On SUB, turn your level clockwise until it gets to the 1 o'clock position.



4. On SUB, turn your BASS EQ clockwise until it gets to the 7 o'clock position to start.



First, make sure all crossovers are turned counter-clockwise until it won't turn anymore. This would be around the 5 o'clock position on a clock face. We will use this analogy to set all of the knobs moving forward.

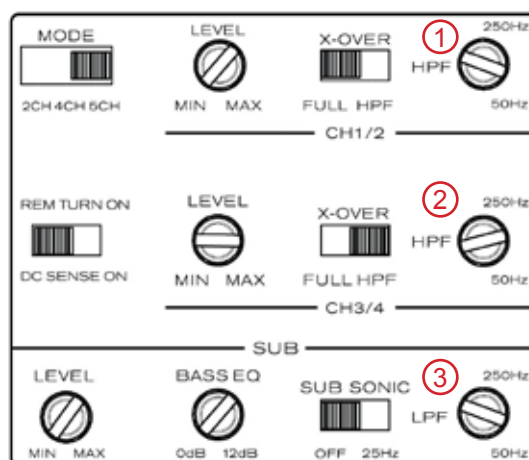
1. On CH1/2, leave this knob at the 5 o'clock position.



2. On CH3/4, turn your HPF clockwise until it gets to the 8 o'clock position.



3. On SUB, turn your LPF clockwise until it gets to the 10 o'clock position.



FCC Notification

This equipment has been tested and found to comply with the limits for a Class B digital device, pursuant to part 15 of the FCC Rules. These limits are designed to provide reasonable protection against harmful interference in a mobile installation. This equipment generates uses and can radiate radio frequency energy. If not installed and used in accordance with the instructions, this equipment may cause harmful interference to radio communications. There is no guarantee that interference will not occur in a particular installation.

WARNING: Changes or modifications not expressly approved by the party responsible for compliance could void the user's authority to operate the equipment.

This equipment complied with FCC radiation exposure limits set forth for an uncontrolled environment. This equipment should be installed and operated with a minimum distance of 20cm between the radiator and your body.



WARRANTY

Maxxsonics, LLC. warrants this product, to the original consumer purchaser, to be free from defects in material and workmanship for a period of one (1) year from the date of purchase. Maxxsonics, LLC. will, at its discretion, repair or replace defective products during the warranty period. Components that prove to be defective in materials and workmanship under proper installation and use must be returned to the original authorized Maxxsonics, LLC. retailer from where it was purchased. A photocopy of the original receipt must accompany the product being returned. The costs associated with removal, re-installation, and freight are not the responsibility of Maxxsonics, LLC. This warranty is limited to defective parts and specifically excludes any incidental or consequential damages connected therewith. To view the full warranty, please visit the website.

MB Quart products are designed and engineered in the USA by

MAXXSONICS®

www.maxxsonics.com