

Installation Instructions

Description:	Dual 10" Subwoofer Enclosure 2016 - 2023 Toyota Tacoma (Third Generation)
Part Number:	MBTAC-SUB-1
Assembly Time:	120 Min (2-Hours)

It is always best practice to disconnect your negative battery terminal prior to any electronics installations to avoid damaging the vehicles electrical system. Before you begin, read through these instructions and check that all parts are present.

This installation may require special skills and tools to complete, it may be necessary to seek a trained installation technician to complete this installation. Please note that MB Quart cannot assume any responsibility for damage resulting from incorrect installation.

TS1-2810 Parts List		
No.	Component Name	Qty
1	Dual 10" Subwoofer Assembly	1
2	ST4.2 x 19mm High / Low Screw	8
3	ST4.8 x 32mm High / Low Screw	4
4	M5 Washer	4
5	M6 x 30mm Hex Bolt with Threadpatch	4
6	M6 Washer	4
7	M6 Spread Clip	2
8	EVA Foam	1
9	Adhesive Pad	1
10	Drill Template	-

Tools Required (May Vary on Application)	
1	Bojo or Panel Tool
2	10mm, 14mm Socket
3	Ratchet
4	1/8", 1/4" Drill Bit
5	Drill
6	Cutting Tool
7	T20 Torx Driver

Disassembly

- Flip rear seat bottoms up.



- Remove (3) headrest from rear seat.



- Flip seat backs down.

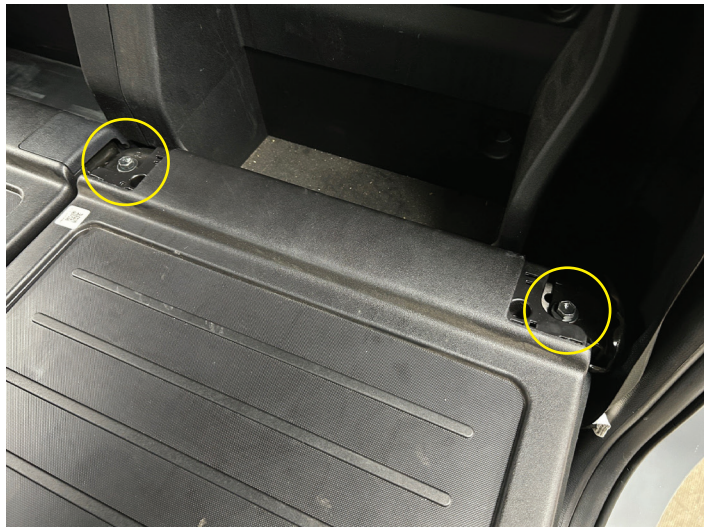


Disassembly

- Using a panel tool remove the (2) covers on the driver side rear seat back.



- Using 14mm ratchet, remove (2) bolts from driver side rear seat back. remove seat back from vehicle



- On passenger side rear seat remove (1) bolt from the middle seat belt with a 14mm ratchet.



Disassembly

- Repeat step 4 and 5 on the passenger side rear seat back. Then remove seat back from vehicle.



- Remove (2) bolts on driver side rear panel using a 10mm ratchet. Then unclip back panel from wall and remove from vehicle.



- Remove (2 or 3) bolts on passenger side rear panel using a 10mm ratchet depending on vehicle trim. Then unclip back panel from wall and remove from vehicle.

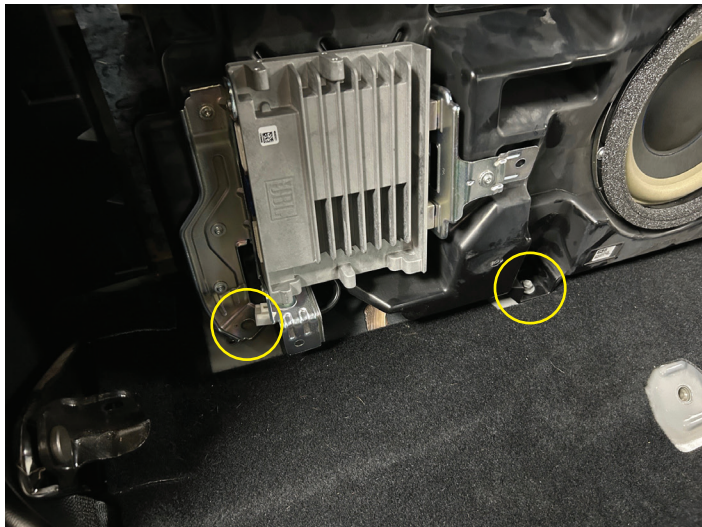


Disassembly - OEM JBL System ONLY

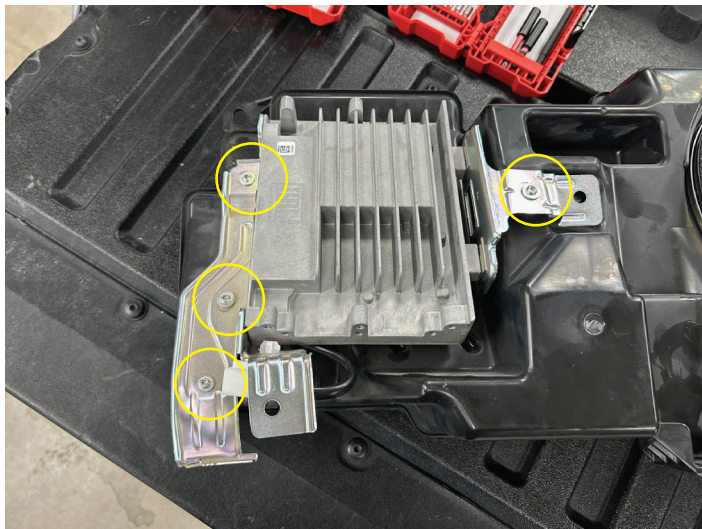
- Disconnect wiring from OEM amplifier.



- Remove (2) bolts with a 10mm ratchet securing the OEM subwoofer enclosure. Then remove from vehicle.

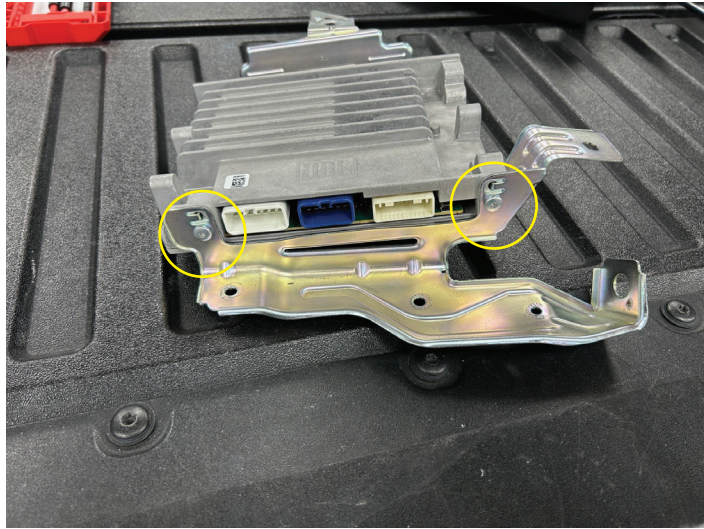


- Remove (4) T20 Torx screws holding the OEM amplifier to the OEM subwoofer enclosure.



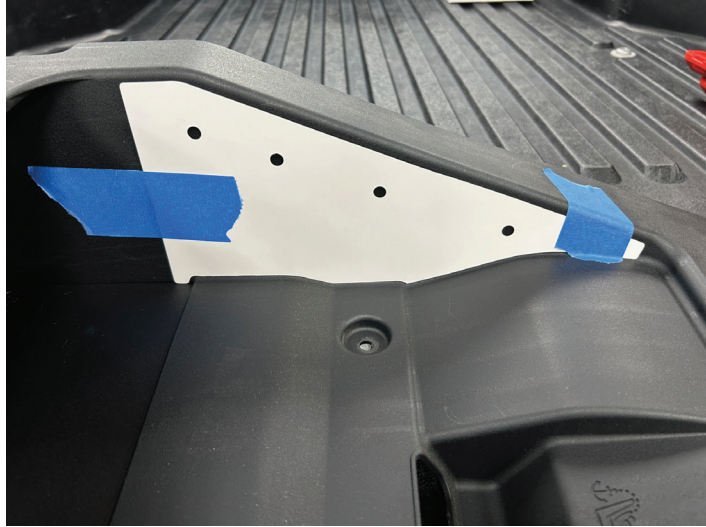
Disassembly - OEM JBL System ONLY

- Remove (4) T20 Torx screws from the (2) amplifier brackets.
- Set the OEM amplifier aside for steps to come.



Panel Modification

- On driver rear panel tape the provided drill template aligning with the vehicle panel as shown.
- Drill (4) holes with a 1/4" drill bit.

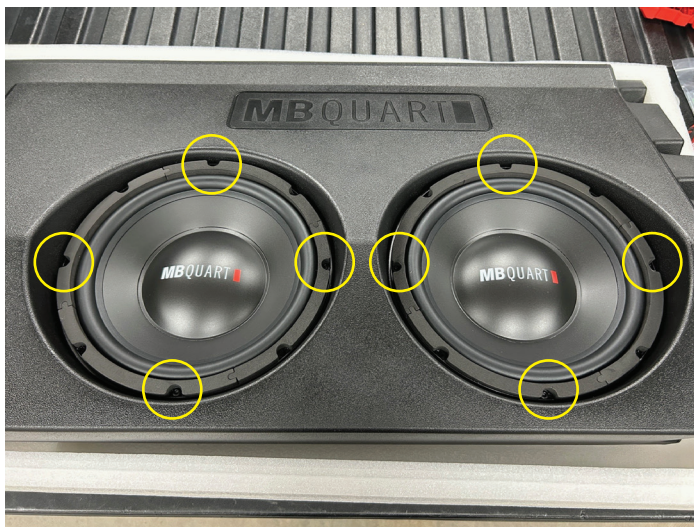


- On passenger rear panel tape along the edge shown.
- Using a cutting tool carefully cut along the tape. We will be using the top section in later steps



Assembly

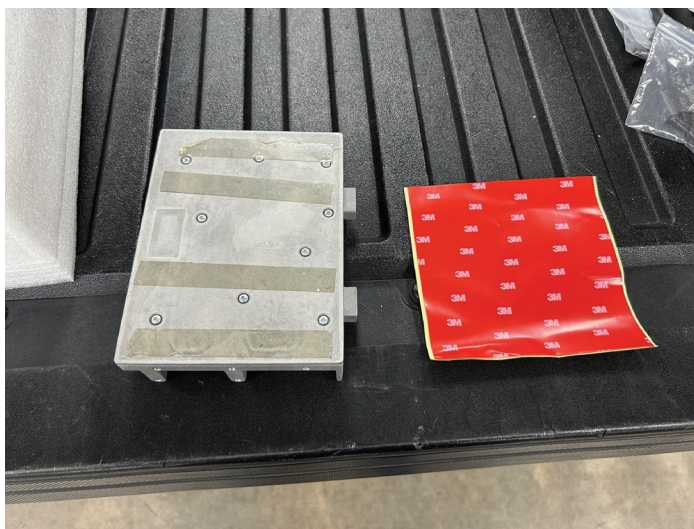
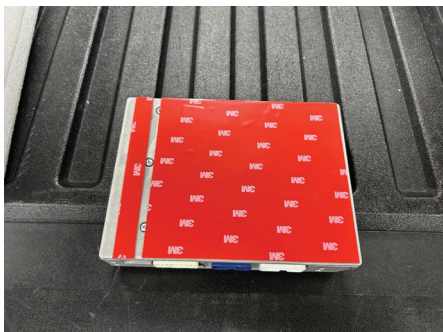
- Remove (8) ST4.2x19mm Torx screws holding the subs to the enclosure using a T20 Torx. Then set subs aside for installation in a later step.



- Apply foam gasket tape along top edge of enclosure.



- If you have OEM amp place provided adhesive pad on the back of the OEM amplifier.

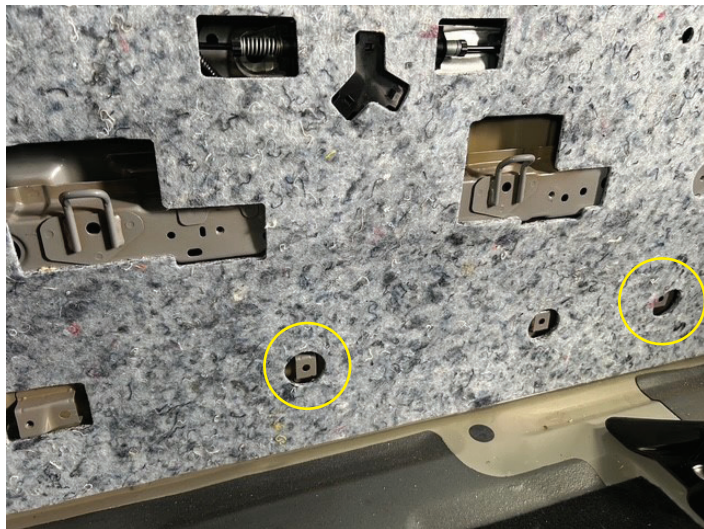


Assembly

- Place OEM amp on recess area on the back of the sub enclosure.



- Install (2) M6 speed clips at the positions shown.



- Install passenger rear top panel cut in previous step back into the vehicle.



Assembly

- Install sub enclosure into the vehicle. Remove polyfill from enclosure while mounting.
- Secure the enclosure, through the subwoofer openings, with (4) M6 x 30mm bolts with (4) M6 washers using a 10mm ratchet.
- If your vehicle has the OEM amp reconnect at this time.



- Reinstall the polyfill and then connect the enclosure wiring to the subwoofers.
- Secure subwoofers using (16) ST4.2 x 19mm Torx screws using a T20 Torx.



- Install driver rear panel back into the vehicle and install (2) bolts with a 10mm ratchet.



Assembly

- Using a 1/8" drill bit, drill (4) holes into the sub enclosure through the previous drilled holes on the driver side rear panel.



- Install (4) ST4.8 x 32mm Torx screws and (4) M5 washers using a T20 Torx.



- Connect sub enclosure to the amplifier.



Assembly

- Install the driver and passenger rear seats in the reverse order of disassembly.
- Enjoy your MB Quart audio system.



FCC Notification

This equipment has been tested and found to comply with the limits for a Class B digital device, pursuant to part 15 of the FCC Rules. These limits are designed to provide reasonable protection against harmful interference in a mobile installation. This equipment generates uses and can radiate radio frequency energy. If not installed and used in accordance with the instructions, this equipment may cause harmful interference to radio communications. There is no guarantee that interference will not occur in a particular installation.

WARNING: Changes or modifications not expressly approved by the party responsible for compliance could void the user's authority to operate the equipment.

This equipment complied with FCC radiation exposure limits set forth for an uncontrolled environment. This equipment should be installed and operated with a minimum distance of 20cm between the radiator and your body.



WARRANTY

Maxxsonics, LLC. warrants this product, to the original consumer purchaser, to be free from defects in material and workmanship for a period of one (1) year from the date of purchase. Maxxsonics, LLC. will, at its discretion, repair or replace defective products during the warranty period. Components that prove to be defective in materials and workmanship under proper installation and use must be returned to the original authorized Maxxsonics, LLC. retailer from where it was purchased. A photocopy of the original receipt must accompany the product being returned. The costs associated with removal, re-installation, and freight are not the responsibility of Maxxsonics, LLC. This warranty is limited to defective parts and specifically excludes any incidental or consequential damages connected therewith. To view the full warranty, please visit the website.

MB Quart products are designed and engineered in the USA by

MAXXSONICS®

www.maxxsonics.com