

INTERFACE COMPONENTS

- AXAMP-CH4 amplifier integration interface
- AXAMP-CH4 vehicle T-harness
- Bass knob

APPLICATIONS

Visit AxxessInterfaces.com for current application list

Amplifier Integration Interface

Fits Select Chrysler Models 2007-2020

INTERFACE FEATURES

- Designed for amplified and non-amplified systems
- Provides 6 channels of 5-volt RMS audio
- Non-fading full range output (channels 5 & 6)
- Simple plug-n-play installation behind the radio
- No programming required
- Dual-colored LED feedback light
- Input: 50W per channel
- Amp turn-on trigger (DC) 250mA
- 2-channel S/PDIF out (front)

For **Dash Disassembly Instructions**, refer to metraonline.com. Enter the year, make, and model of the vehicle in the **Vehicle Fit Guide** for **Radio Install kits**.

www.MetraOnline.com



TABLE OF CONTENTS

Installation Options	2
Installation	3
Adding Amp/Amps to a Factory System	
Non-amplified.....	4
Amplified.....	5
Troubleshooting: LED Feedback	8

TOOLS & INSTALLATION ACCESSORIES REQUIRED

- Crimping tool and connectors, or solder gun, solder, and heat shrink
- Tape
- Wire cutter
- Zip ties
- Multimeter

Visit AxxessInterfaces.com for more detailed information about the product and up-to-date vehicle specific applications.

ATTENTION: With the key out of the ignition, disconnect the negative battery terminal before installing this product. Ensure that all installation connections, especially the air bag indicator lights, are plugged in before reconnecting the battery or cycling the ignition to test this product.

NOTE: Refer also to the instructions included with the aftermarket accessory before installing this device.

INSTALLATION OPTIONS

Adding a full-range amp and subwoofer to a factory system:

This feature offers the ability to add a full-range amp and sub to a factory system, whether amplified* or non-amplified. (refer to **Page 3**)

* For amplified models the amp must be bypassed/unplugged. Refer to www.MetraOnline.com for the vehicle specific amplifier bypass harness.

Note: The interface provides a 12-volt 1-amp output to turn on aftermarket amp(s). If installing multiple amps, an SPDT automotive relay will be required if the amp turn-on current of all amps combined exceeds 1-amp. Use Metra part number E-123 (sold separately) for best results.

INSTALLATION

1. Disassemble the dash, unplug all connectors, and remove the factory radio.*
2. Install the **AXAMP-CH4 vehicle T-harness** to the vehicle radio harness and make all the necessary connections. Leave the 2-pin amp turn on wire disconnected.
3. Plug the 20-pin harness from the **AXAMP-CH4 T-harness** into the interface.
4. Connect the **Amp Turn-on** wire.
*** NOTE:** If the factory system is not amplified **DO NOT** connect the 2-pin harness. (See system graphics on pages 4 & 5)
5. Connect the 2-pin **Amp Turn On Wire** to the interface and then connect to the aftermarket amplifiers.
6. Connect RCAs to the **FRONT, REAR or SUB** output of the **AXAMP-CH4 interface**, then connect to the corresponding amplifier.
7. Adjust your aftermarket amplifier to a desired listening level.

Bass Knob Adjustment

The bass knob connects to the 2 wires from the 20-pin connector labeled **BASS KNOB**.

The bass knob is used to adjust the output of Channels 5 & 6 of the AXAMP.

Adjustment is as follows:

Counterclockwise turn lowers the volume of channels 5 & 6.

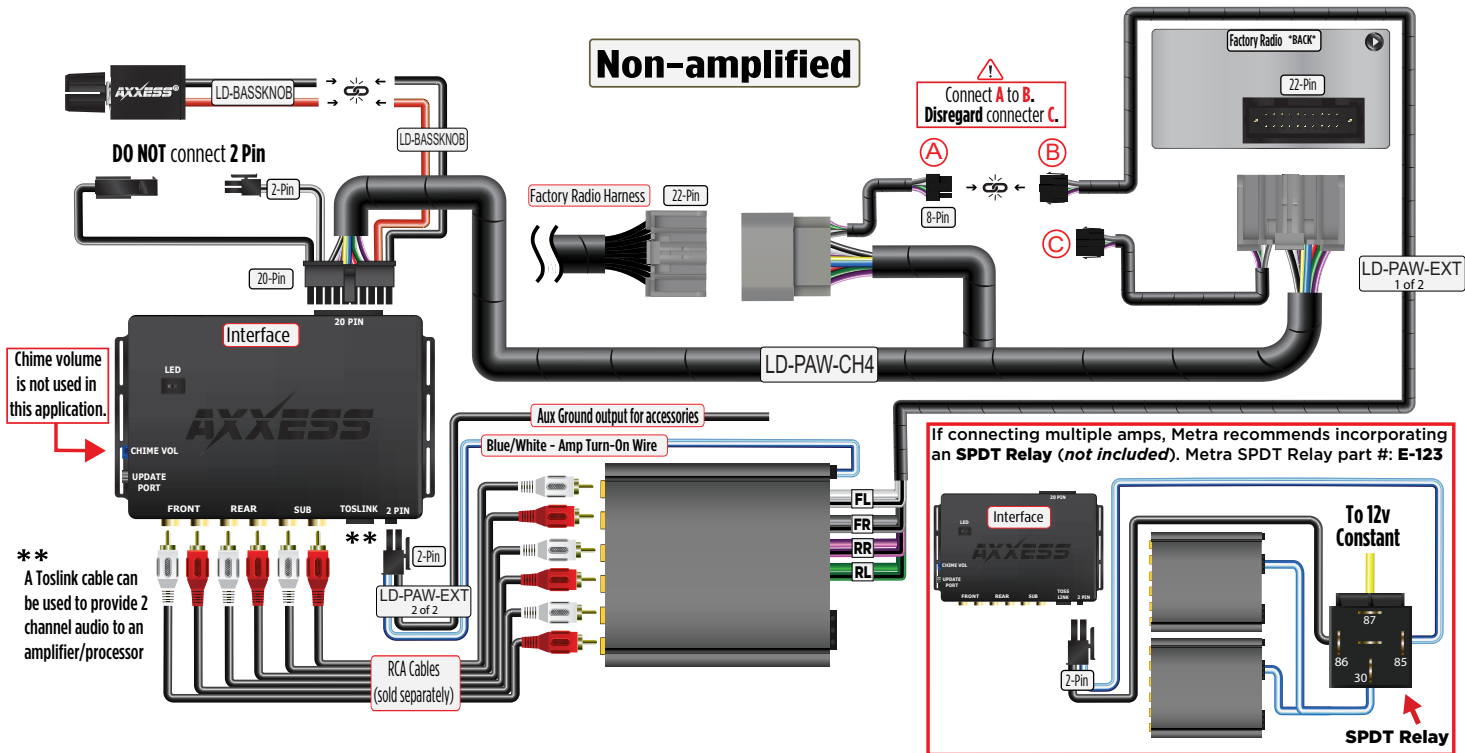
Clockwise turn raises the volume of channels 5 & 6.

Extension Harness (non-amplified only):

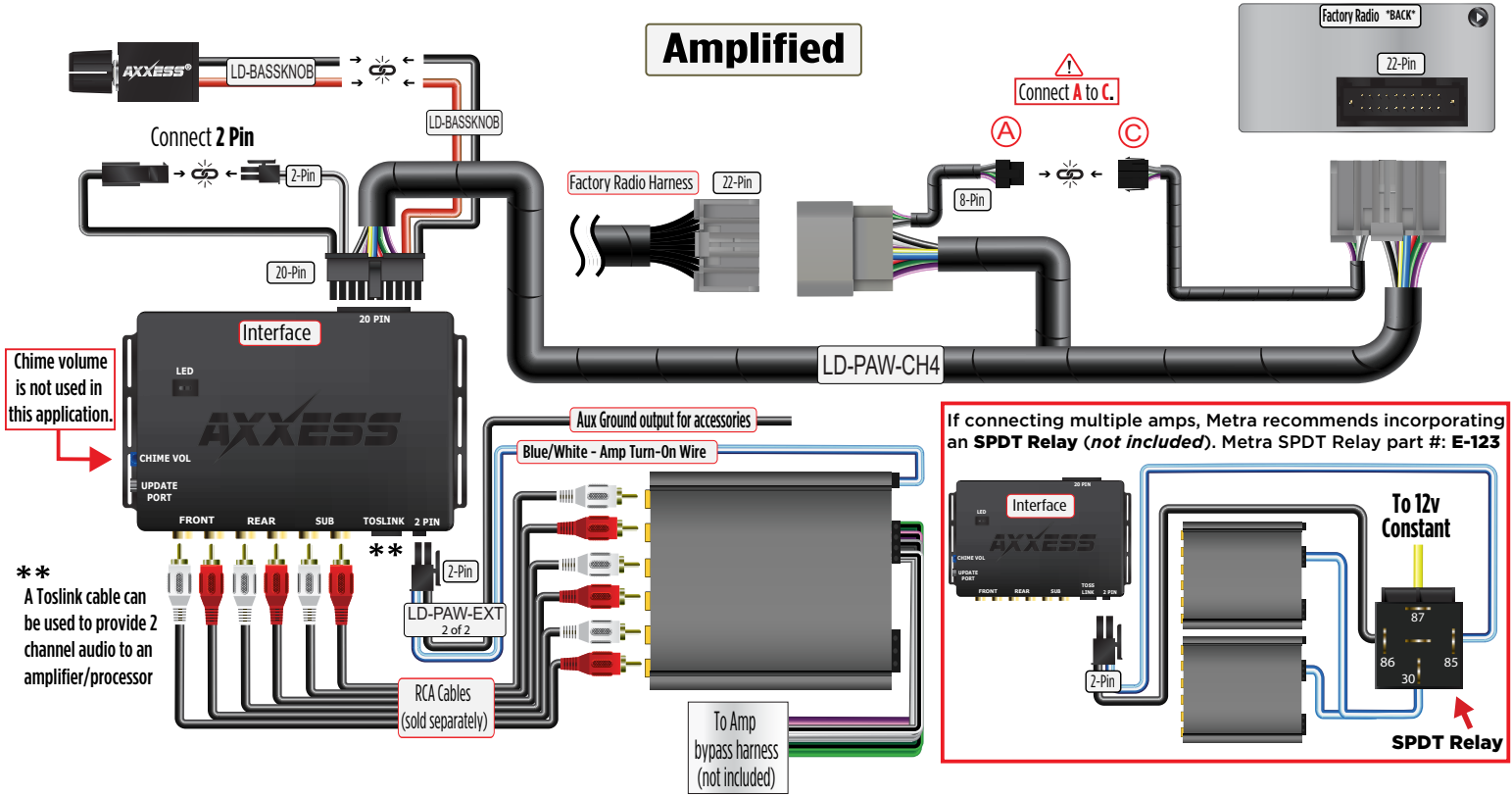
1. Connect the included **Extension Harness** 8-pin harness "**B**" to the 8-pin harness "**A**" on the **vehicle T-harness** to connect factor speaker locations.
2. Connect the end of the **Extension Harness** to the aftermarket amplifier.

* For amplified models the amp must be bypassed/unplugged. Refer to www.MetraOnline.com for the vehicle specific amplifier bypass harness.

ADDING AMPLIFIER/AMPLIFIERS TO A FACTORY SYSTEM



ADDING AMPLIFIER/AMPLIFIERS TO A FACTORY SYSTEM CONT.







TROUBLESHOOTING

Final LED Feedback

At the end of programming the LED will turn **Solid Green** which indicates programming was successful. If the LED didn't turn **Solid Green**, reference the list below to understand which programming section the problem may stem from.

Feedback Light	Condition/Status
Solid Green	All Good
Solid Red	Missing CAN Frames
Blink Red	Clipping Output
Green/Red	Missing Adv. (Comm Frames)

Scan QR Code



Further troubleshooting steps and information can be located at:

axcessinterfaces.com/product/AXAMP-CH4

Having difficulties? We're here to help.



Contact our Tech Support line at:
386-257-1187



Or via email at:
techsupport@metra-autosound.com

Tech Support Hours (Eastern Standard Time)

Monday - Friday: 9:00 AM - 7:00 PM

Saturday: 10:00 AM - 5:00 PM

Sunday: 10:00 AM - 4:00 PM



Metra recommends MECP
certified technicians