



**VIRTUS 402/502/602**

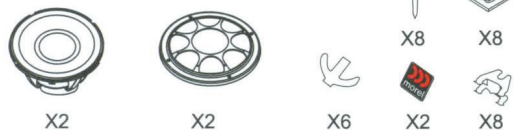
**VIRTUS 503/603**

**2-Way / 3-Way Component Systems Installation Guide**

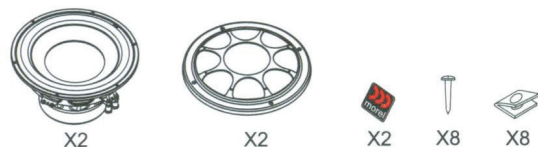


## VIRTUS PACKAGE CONTENT

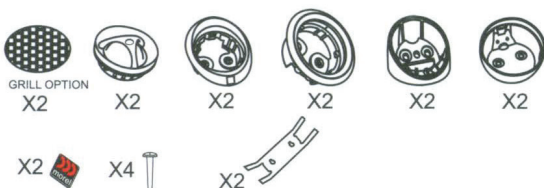
### 4" WOOFER (ONLY IN 2-WAY)



### 5", 6" WOOFER



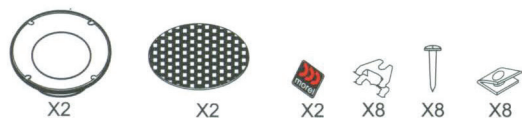
### MT120 TWEETER



### MXR200 / MXR300 CROSSOVER

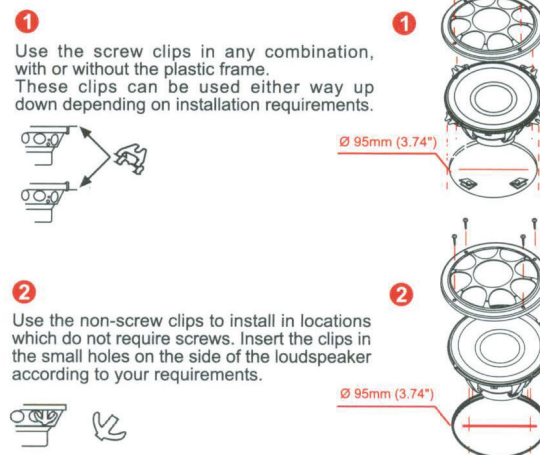


### CDM600 MIDRANGE (IN 3-WAY ONLY)

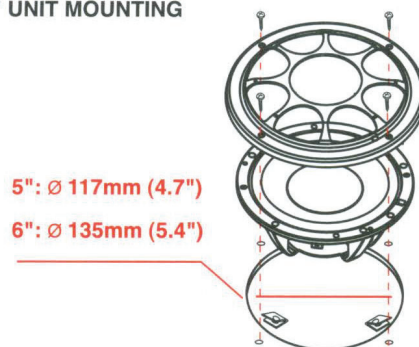


## WOOFER & CROSSOVER MOUNTING

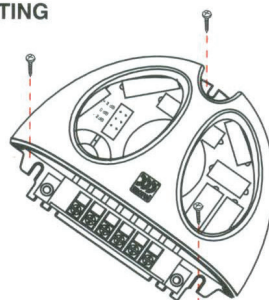
### 4" UNIT MOUNTING



### 5", 6" UNIT MOUNTING

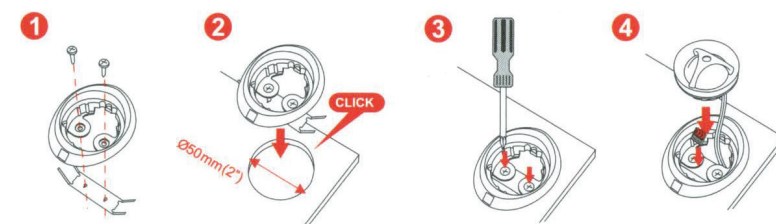


### CROSSOVER MOUNTING

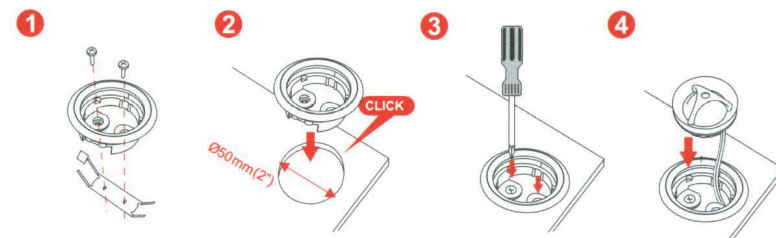


## TWEETER MOUNTING

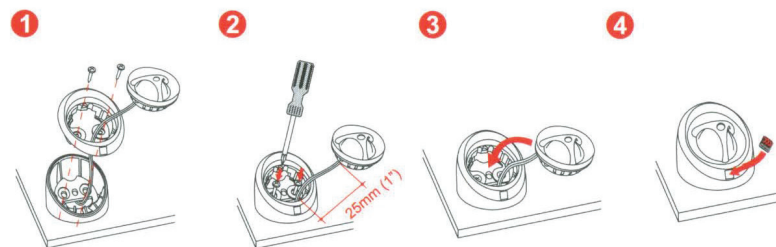
### FLUSH MOUNTING OPTION 1



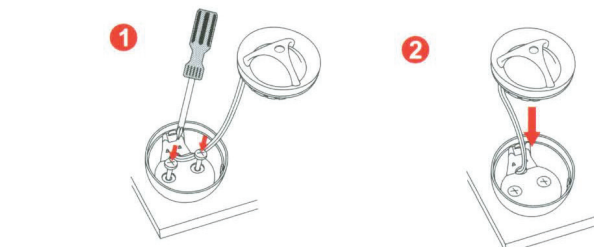
### FLUSH MOUNTING OPTION 2



### SURFACE MOUNTING OPTION 1

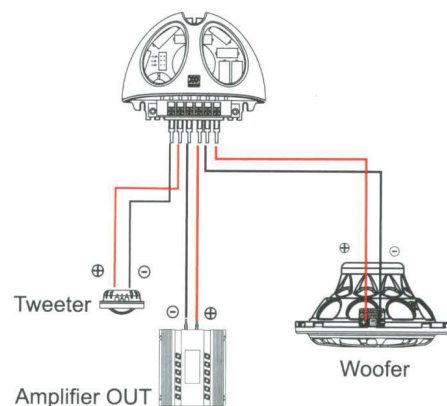


### SURFACE MOUNTING OPTION 2

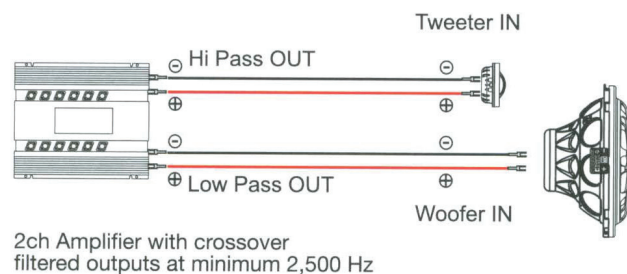


## MXR200 CROSSOVER WIRING (2-WAY SYSTEM)

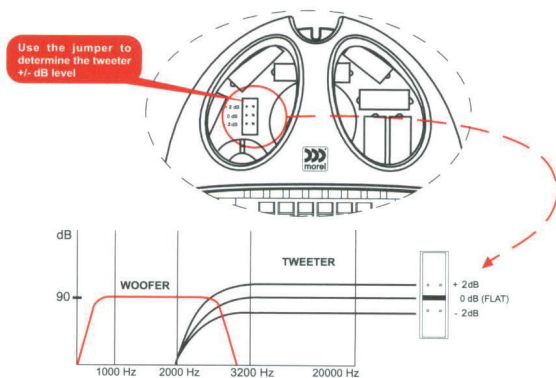
### PASSIVE SET UP



### ACTIVE SET UP (Outputs must be filtered)

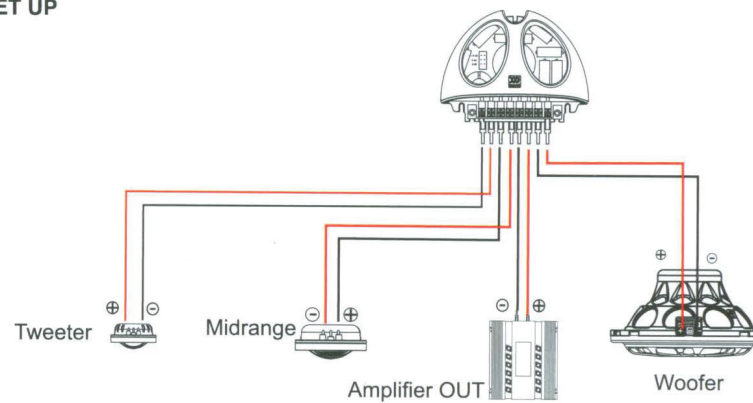


## MXR200 / MXR300 TWEETER LEVEL ALIGNMENT

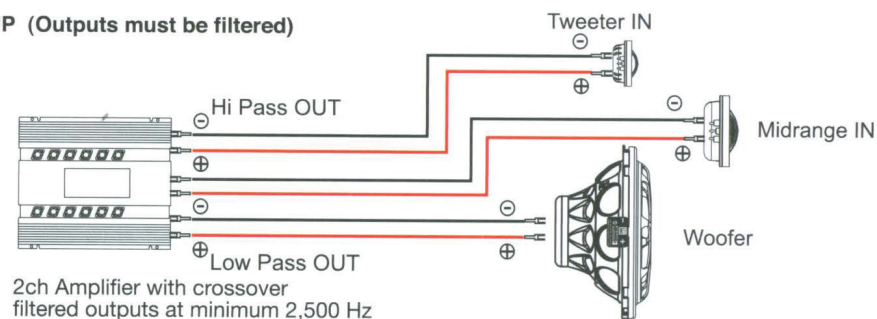


## MXR300 CROSSOVER WIRING (3-WAY SYSTEM)

### PASSIVE SET UP

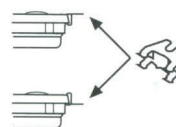


### ACTIVE SET UP (Outputs must be filtered)

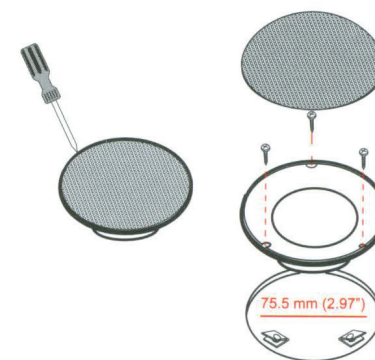


## CDM600 MIDRANGE MOUNTING

### Option 2



### Option 1



Use the screw clips in any combination, with or without the plastic frame. These clips can be used either way up down depending on installation requirements.



## SPECIFICATIONS

WOOFERS	VIRTUS MW4	VIRTUS MW5	VIRTUS MW6
Nominal Impedance (Ohms)	4	4	4
Power Handling Wrms	100	120	140
Max. Trans.Pwr Handling Wrms	300	300	300
Sensitivity (2.83V/1M)	87 dB	88 dB	88 dB
Frequency Response Hz	70-4500	65-4000	55-4000
Resonant Freq. Fs Hz	80	75	65
Voice Coil Diameter mm (inch)	54 (2.1)	54 (2.1)	54 (2.1)
Voice Coil Height mm (inch)	8 (0.51)	12 (0.48)	12 (0.48)
Voice Coil Type/ Former	Aluminum	Aluminum	Aluminum
Voice Coil Wire	Hexatech™ aluminum	Hexatech™ aluminum	Hexatech™ aluminum
DC Resistance (Ohms)	3	3.5	3.5
Voice Coil Induct. @1 kHz (MH)	0.23	0.32	0.33
Magnet System	Double ferrite rear vented	Double ferrite rear vented	Double ferrite rear vented
HE-Magnetic Gap Height mm (inch)	4 (0.16)	4 (0.16)	4 (0.16)
B-Flux Density (T.M.)	0.48	0.65	0.65
BL Product/BXL	3.33	3.53	3.41
Max. Linear Ex./Xmax mm (inch)	4±2 (0.16 ±0.08)	8±4 (0.32±0.16)	8±4 (0.32±0.16)
Suspension Compliance CMS - mm/N	0.73	0.49	0.57
Electrical Q Factor QES	0.76	1.22	1.3
QTS	0.55	0.85	0.9
QMS	2	2.82	2.88
Mech.Resistance RMS - Ohm/meter	1.42	1.54	1.49
Moving Mass MMS - gr/ ounce	5.96 (0.21)	9.31 (0.33)	10.67 (0.38)
Equiv. Can Air Load VAS - L (cu.ft)	4.17 (0.15)	5.55 (0.195)	11.38 (0.45)
Effective Piston Area SD sq.cm (sq. inch)	64 (9.92)	90 (13.95)	119 (18.45)
Cone Type	Formed Paper	Formed Paper	Formed Paper
Cone Material	Composite cellular fiber	Composite cellular fiber	Composite cellular fiber
Unit Diameter mm (inch)	104 (4.0)	135 (5.25)	165 (6.50)
Mounting Depth mm (inch)	50 (2.1)	56.5 (2.22)	61 (2.36)
Mounting Cutout mm (inch)	95 (3.74)	120 (4.72)	141 (5.55)
Net Weight Kg (lb)	0.54 (1.92)	0.67 (1.21)	0.739 (1.61)

\* Morel operates a policy of continuous products design improvement, consequently specifications are subject to alteration without prior notice.

MIDS & TWEETERS	CDM600	MT120
Nominal Impedance (Ohm)	4	4
Power Handling (WRms)	100	80
Max Transient Power Handling W (10ms)	300	250
Sensitivity (2.83V/1M) dB	90	90
Frequency Response Hz	600-6000	1800-22000
FS Hz	480	1150
Voice Coil Diameter mm (inch)	54 (2.125)	28 (1.125)
Voice Coil Former	Aluminum	Aluminum
Voice Coil Wire	Hexatech™ Aluminum	Copper
DC Resistance Ohm	3.5	3.7
Magnet System	Neodymium Rear Vented	Neodymium
Dome Type	Selected soft dome	Acuflex™ hand coated soft dome
Dome Material	Silk	Silk
Unit Diameter mm (inch)	88.00 (3.50)	45.00 (1.8)
Mounting Depth mm (inch)	21.00 (0.83)	20.00 (0.80)
Mounting Cutout mm (inch)	75.50 (2.97)	50.00 (2.00)
Net Weight Kg(lb)	0.25 (0.55)	0.06 (0.13)

CROSSOVERS	MXR200	MXR300
Crossover Point	2200Hz/12dB	W: 500Hz / 12dB M:18dB/ 2200Hz/ 12dB T: 2200Hz / 6dB
Crossover Controls	Tweeter+/- 2dB	Tweeter+/- 2dB
Wiring Options	N/A	N/A



www.morelhifi.com



**Verifying your Genuine Morel Product**  
In light of counterfeit products that have appeared in some markets, Morel enables you to verify the authenticity of your purchase.

1. Remove the verification slip from the nylon bag that contains your Installation Guide.
2. Place it over the verification sticker found on the bottom of each Genuine Morel product.
3. The word "Genuine" should become visible.
4. If not, we recommend that you return the product to your point of purchase.

**HOLD  
HERE**

