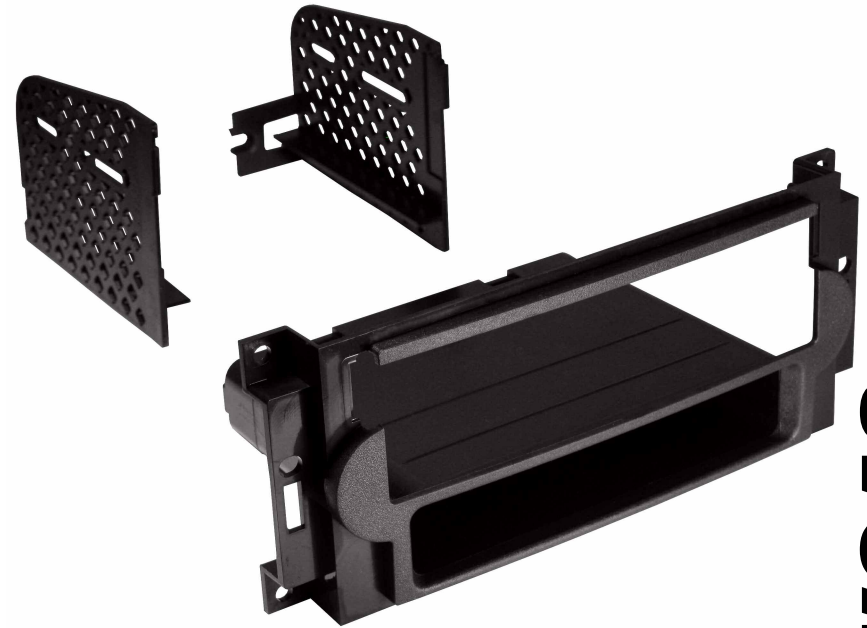


For information about other American International automotive accessories visit our website at:

<http://www.aius.net>



**American
International**
Car Stereo Installation Kits & Accessories



CDK648 Mounting Kit



American International

WWW.AIUS.NET

2500 East Francis Street Ontario, CA 91761, U.S.A.

USA Sales (800) 336-6500

Canada Sales (888) 922-3006

CUSTOMER HELP LINE

USA 800-323-4329 • Canada 800-245-8777

iCDK648

VEHICLE APPLICATIONS Non-Navigation Vehicles Only

Chrysler

2005-07 300/300C
2007 ASPEN
2006-10 PT CRUISER

Dodge

2007-08 CALIBER
2006-07 CHARGER
2005-07 DAKOTA
2004-07 DURANGO
2005-07 MAGNUM
2006-08 RAM P/U

Jeep

2006-07 COMMANDER
2007-08 COMPASS
2005-07 GRAND CHEROKEE
2007-08 PATRIOT

Mitsubishi

2006-07 RAIDER

2006-08 DODGE RAM P/U

DASH DISASSEMBLY INSTRUCTIONS

AUTOMATIC TRANSMISSION

1. Open the lower center console drink holder compartment.
2. Remove the (1) 9/32 screw from under each 12 volt power receptacle.
3. Carefully starting from the bottom edge, pry the entire Radio/Climate control trim bezel forward to release and lay out of the way.
4. Remove the (4) 9/32 screws securing the radio to the sub-dash, pull radio forward, disconnect all harnesses and antenna lead and remove radio.

MANUAL TRANSMISSION

1. Carefully lift up and remove the rubber cup holder insert from the lower console bezel.
2. Remove the (2) 5/16 screws securing the bottom portion of the cup holder and remove cup holder.
3. Remove the (2) 5/16 screws securing the shifter trim and shifter boot, pull towards you and back (sliding rubber boot upward slowly) to allow access to the screws at the of the lower center dash trim panel.
4. Remove the (2) 9/32 screws from the lower edge of the bottom center dash trim, depress the trim panel inward and pull down to remove.
5. Remove the (1) 9/32 screw from under each 12 volt power receptacle.
6. Carefully starting from the bottom edge, pry the entire Radio/Climate control trim bezel forward to release and lay out of the way.
7. Remove the (4) 9/32 screws securing the radio to the sub-dash, pull radio forward, disconnect all harnesses and antenna lead and remove radio.

2004-07 DODGE DURANGO

DASH DISASSEMBLY INSTRUCTIONS

1. Remove (2) 9/32" screws from the bottom of the Radio / Climate Control Bezel. (The screws are located under the cigarette lighter pocket).
2. Starting at the bottom of the bezel, Carefully pry it forward to detach the bezel from the dashboard.
3. Carefully pull from the top of the bezel down & forward and disconnect the wire harnesses from the rear of the bezel.
4. Leaving the Climate Controls attached to the bezel, remove the bezel from the dashboard. Set the dash bezel aside, out of harms way.
5. Remove the (4) 9/32" screws securing the factory radio to the sub-dash.
6. Carefully Pull the radio forward, disconnect the wire harness & antenna lead and remove radio.

2005-07 JEEP GRAND CHEROKEE

DASH DISASSEMBLY INSTRUCTIONS

1. Carefully pry forward the trim/vent assembly from around the radio and remove.
2. Remove the (4) Phillips screws securing the radio to the sub-dash.
3. Pull radio forward, disconnect the wire harness and antenna lead and remove radio.

2006-07 COMMANDER

DASH DISASSEMBLY INSTRUCTIONS

1. Remove the (16) 3/16 Allen screws securing the four vent locations of the dash bezel in place.
2. Carefully pry the entire Radio/Vent trim panel forward (Note: there are panel clips along the top edge and one in the middle below the radio). Remove dash panel.
3. Remove the (4) 9/32 screws securing the radio to the sub-dash.
4. Carefully pull radio forward, disconnect all attached harnesses and antenna lead and remove radio.

2006-10 PT CRUISER

DASH DISASSEMBLY INSTRUCTIONS

1. Turn the Vents above the radio horizontal to expose and allow access to the slots where there is an individual Phillips screw located at the bottom of each vent, using a magnetized Phillips screw driver, remove the individual Phillips screw from each vent location.
2. Carefully unclip and pry the entire Radio/Climate control trim bezel forward, disconnect all attached harnesses and remove bezel.
3. Remove the (4) phillip's screws securing the radio to the sub-dash.
4. Pull the radio forward, disconnect the wire harness and antenna lead and remove radio.