



MAVR-US10U

2024-Up CanAm Maverick R XRS

Underseat Subwoofer Enclosure

10" - Unloaded

WARRANTY INFORMATION:

All SSV Works enclosures are covered by a limited lifetime warranty against defects in material or workmanship. All SSV Works Electronics are covered by a limited 1 year warranty against defects in material or workmanship. All SSV Works Speakers are covered by a limited 1 year warranty against defects in material or workmanship. Labor for replacement of defective components is not covered. Contact SSV Works for further warranty information.



Please read and understand these instructions completely before installation to avoid possible injury, or damage to the accessory or vehicle.



MAVERICK R DASH SPEAKER PANEL PARTS LIST

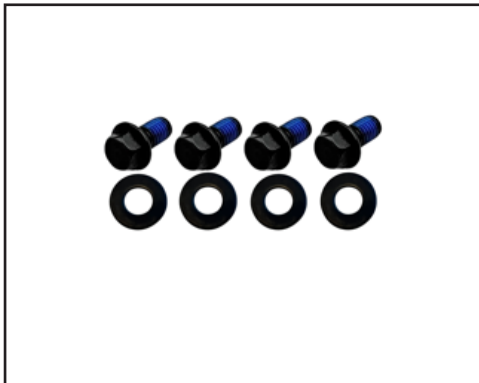
PARTS LIST IMAGES



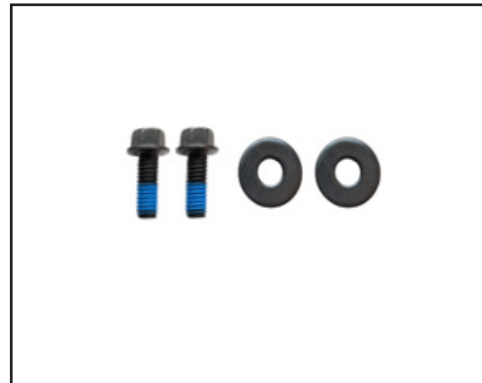
Maverick R Subwoofer Enclosure,
Driver or Passenger side



Bracket Pack [B-MBP3375]



M6x12 Hex Head Screw and
Washer Hardware Pack
[B-HPM612HHW14-4]

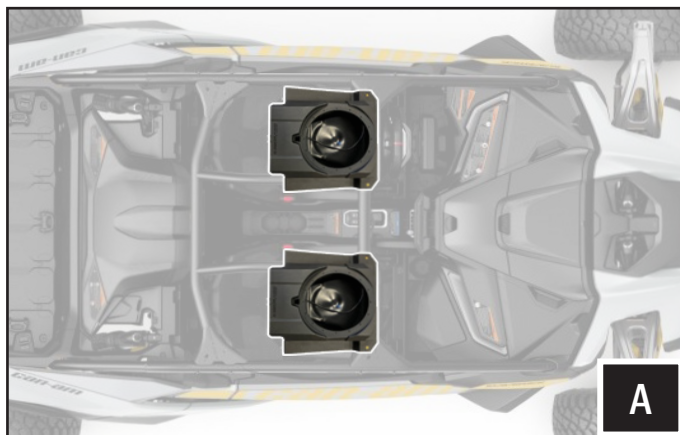


M6x16 Hex Head Screw and
Washer Hardware Pack
[B-HPM616HH-2]

MAVERICK R UNDERSEAT SUBWOOFER INSTALLATION

TOOLS NEEDED FOR INSTALLATION

- 10mm, 13mm & 18mm Socket Wrench



A. The MAVR subwoofer enclosure can be mounted under either the driver or passenger side seat.



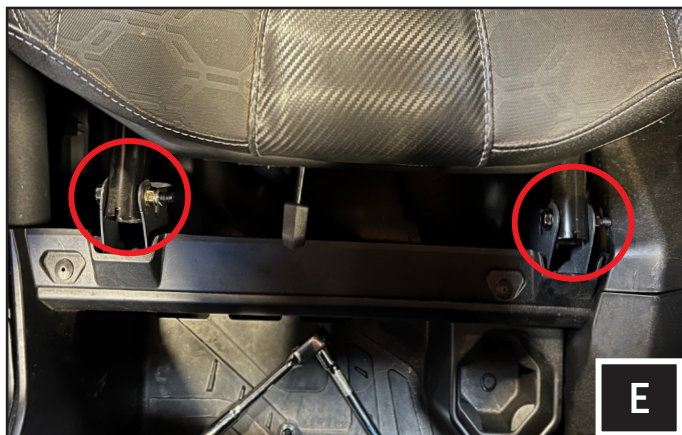
B. If installing the subwoofer enclosure under the driver seat, use an 18mm socket wrench to remove the right shoulder seat belt retractor mechanism. Otherwise, skip to step D.



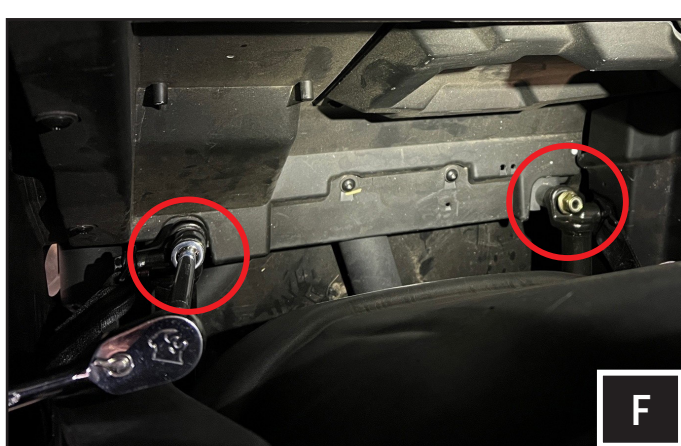
C. Unplug the seatbelt chime connector.



D. Separate the lap portion of the 4-point belt with the main harness.



E. Remove the (2) 13mm bolt and nut on the front seat rail.



F. Slide the seat forward and remove the rear 18mm seat rail nuts.

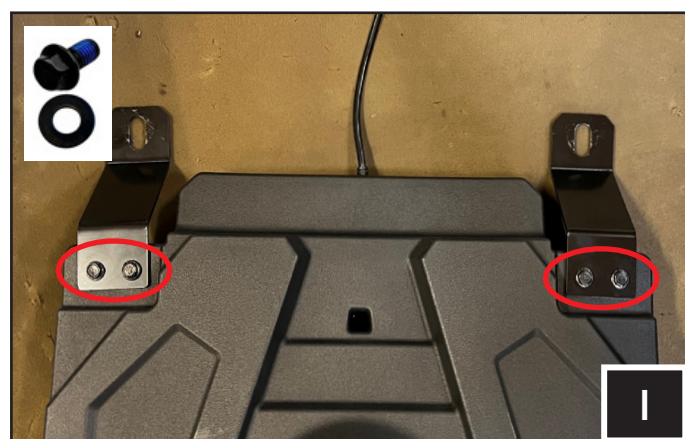
MAVERICK R UNDERSEAT SUBWOOFER INSTALLATION



G. Carefully remove the seat.



H. Apply the foam pad (included in the kit) to the flat portion of the bottom reinforcement tube.



I. Mount the brackets on the Mav R subwoofer enclosure using (4) M6x12mm hex head bolts and washers.



J. Slide the Mav R subwoofer enclosure under the front seat rail mounts and insert the brackets to the rear seat rail studs.

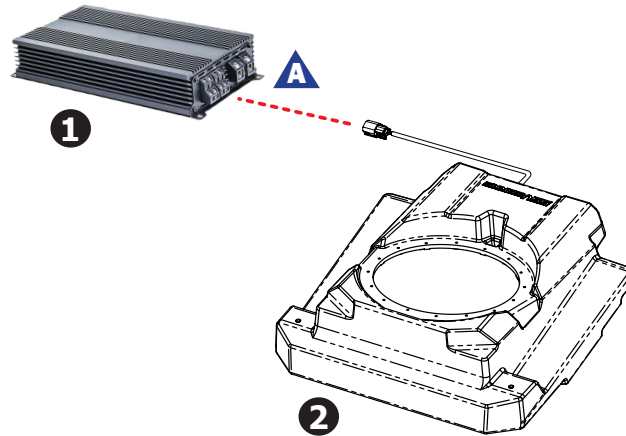


K. Align the front screw holes and use (2) M6x16mm hex head bolts and washer to secure the enclosure.



L. Reverse the disassembly procedure to complete the installation.

MAVERICK R UNDERSEAT SUBWOOFER WIRING DIAGRAM



	Description	Part #
1	Amplifier (not included)	
2	Maverick R Underseat Subwoofer Enclosure	MAVR-US10U

Detail	Description
A	Connect MAVR-US10U to the amplifier

THANK YOU!

We are committed to your satisfaction and we know you will enjoy our products. If you have questions or need any assistance, please let us know.


 [SSVWORKS.COM](https://www.ssvworks.com)
 1-818-991-1778 EXT 2
 SUPPORT@SSVWORKS.COM

Returns must be made within 30 days of purchase date. Claims for missing items or items damaged in transit must be received within five business days of receipt of merchandise. All returns must be in original packaging and in re-sellable condition. Shipping fees are not refundable.