



SSV WORKS, 4610 Calle Quetzal, Camarillo, CA 93012  
www.SSVworks.com | Phone: 818-991-1778 | Fax: 866-293-6751

# X3-DMR4

## Can-Am Maverick X3 and X3 Max

### Multi Radio Dash Kit

#### WARRANTY INFORMATION:

All SSV Works enclosures are covered by a limited lifetime warranty against defects in material or workmanship. All SSV Works Electronics are covered by a limited 1 year warranty against defects in material or workmanship. All SSV Works Speakers are covered by a limited 1 year warranty against defects in material or workmanship. Labor for replacement of defective components is not covered. Contact SSV Works for further warranty information.



Please read and understand these instructions completely before installation to avoid possible injury, or damage to the accessory or vehicle.

#### TOOLS NEEDED FOR INSTALLATION

- T30 torx driver    - #2 phillips screwdriver    - 2" hole saw and safety equipment    - Drill, 1/8" and 1/4" drill bit

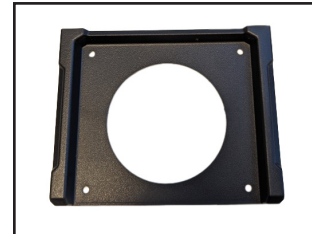
#### PARTS LIST IMAGES



DMR4 Multi Radio Dash Panel  
[B-D3064]



Multi Radio Retention Bracket  
[B-MB3065]



DMR4 Adapter Trim Plate  
[B-MB3070]



Multi Radio Bracket (x2)  
[B-MBP3259]



M3x0.6-25mm Pan Head  
Screws (x4) [B-HPM325-4]



M4x0.7-10mm Pan Head  
Screws (x2) [B-HPM410-2]



Push Pins (x2) [B-HPSR-2]



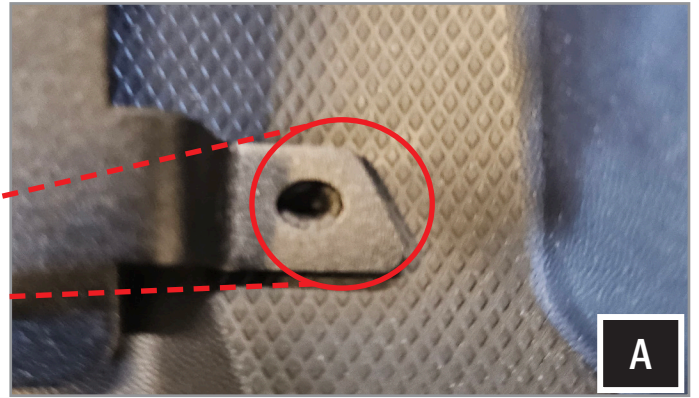
Drill Guides (x4) [B-HP3554]



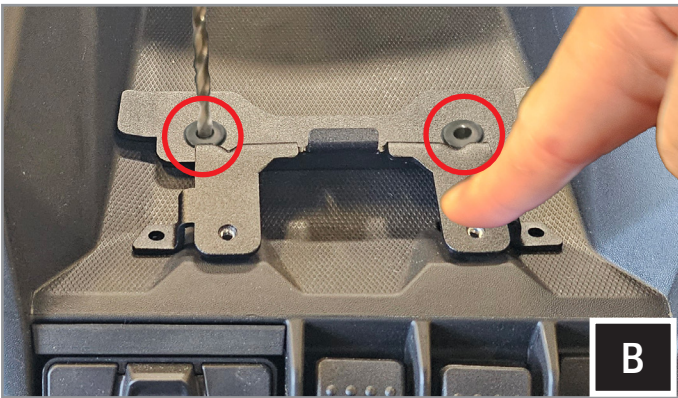
#6-0.50", Black Thread  
Rolling Screws (x4)  
[B-HP#6-4]

## INSTALLATION NOTES

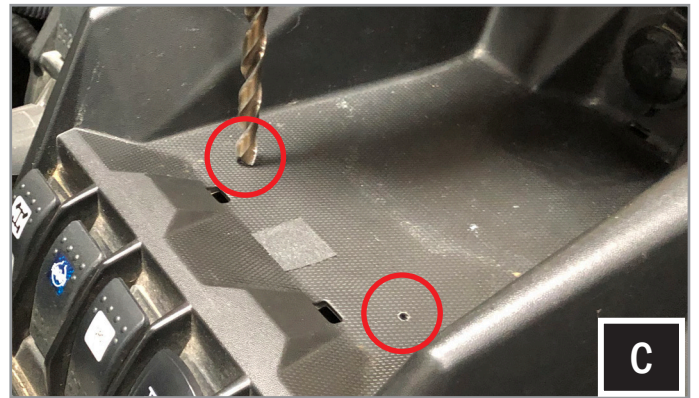
Always disconnect battery. For instructions regarding the headunit, refer to radio manual.



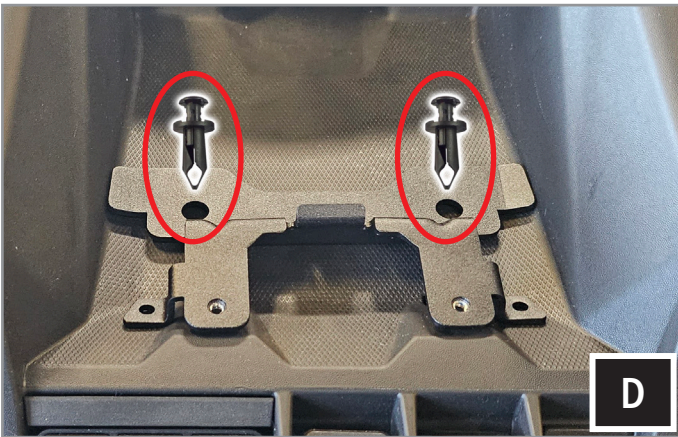
A. Set the base plate on the dash and line up the factory dash dimples to the two outer mounting holes of the base plate.



B. Press down on the base bracket and insert the drill guides to the rear holes of the bracket. Drill 1/8" pilot holes on the center of the drill guides. Limit speed and depth of the drill bit to avoid damaging any wiring.



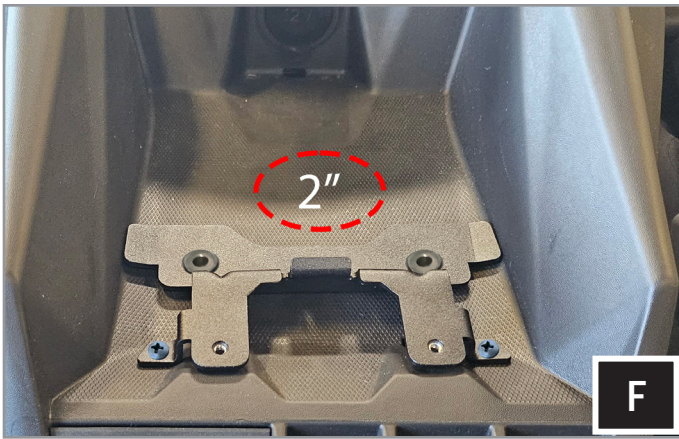
C. Set aside the base plate and open up the pilot holes with a 1/4" drill bit.



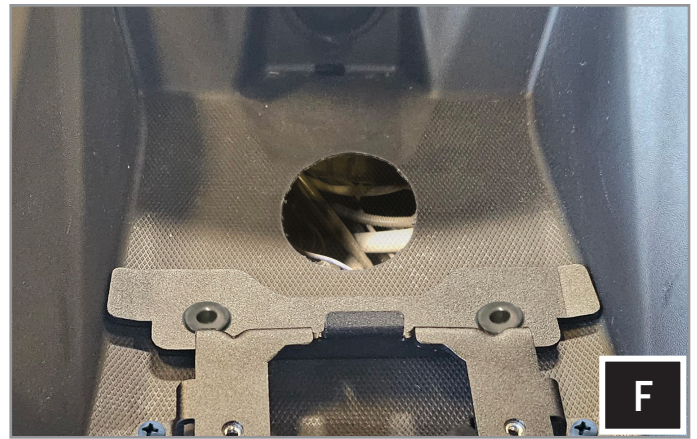
D. Use the (2) push pins to hold the base bracket onto the dashboard.



E. Secure the base bracket to the dashboard using (2) thread rolling screws.



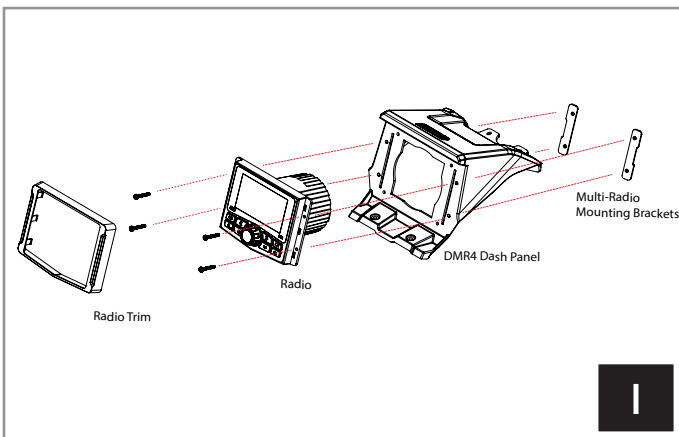
F. Use a 2-inch hole saw to create an opening behind the base bracket. Be careful not to damage any wiring inside the dashboard.



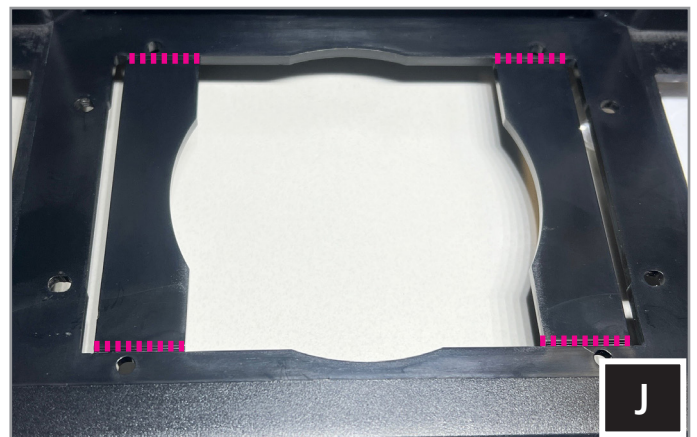
G. Remove top compartment cover.



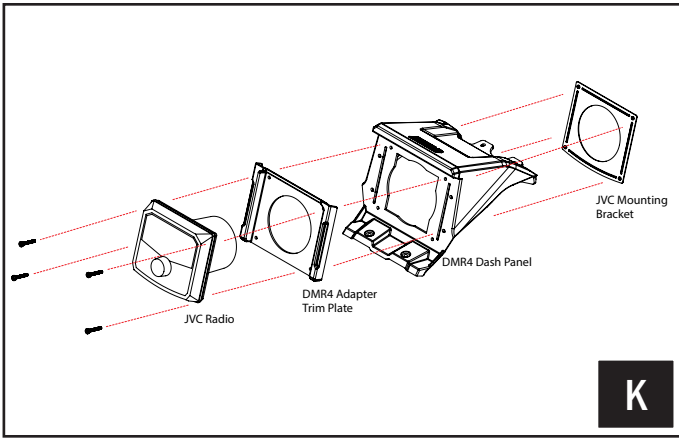
H. Make the radio harness connections and run the connectors through the dashboard hole.



I. For radios with up to a 4" cylindrical heatsink, use the provided multi-radio brackets and M3x25mm screws to mount it to the dash panel.



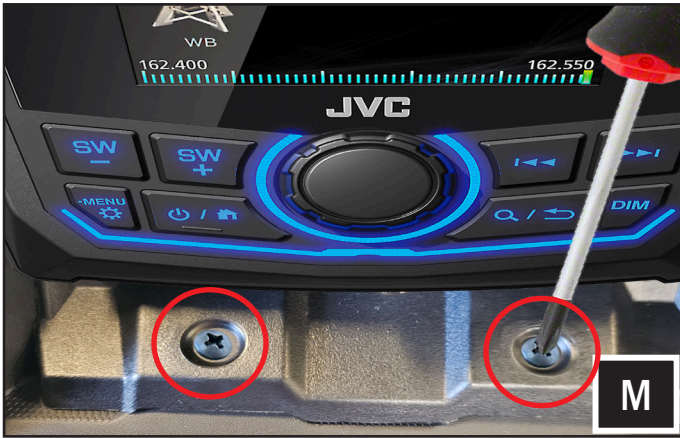
J. For JL and Hertz radios, use snips to cut off the side pieces of the dash panel to fit the heatsink. Use the multi-radio brackets and M3x25mm screws to mount the radio on the dash panel.



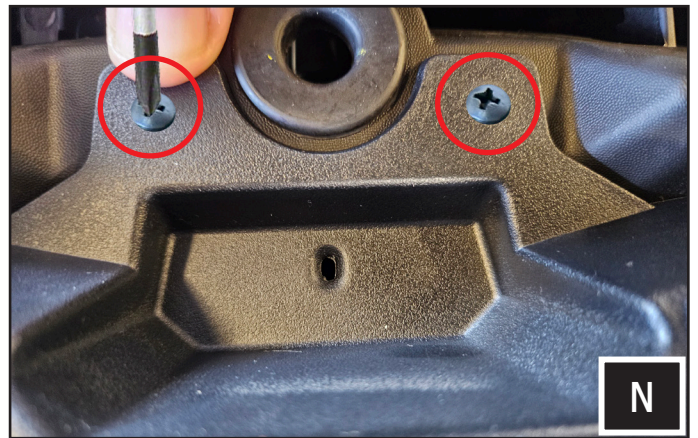
K. For JVC radios, mount the radio between the MRB4 adapter trim plate [B-MB3070] and the dash panel. Secure the radio using the M3x25 screws and JVC supplied mounting bracket.



L. Plug the radio connect connectors to the mating harness and set the dash panel on the dashboard.



M. Secure the front of the dash panel with (2) M4x10mm screws.



N. Secure the rear side of the dash panel using (2) M4x10mm screws.



O. Reinstall the top compartment cover.



This completes the installation in a 2024 Can Am X3.  
Test the radio for functionality.