

Stinger

12"
Infotainment
System

Wireless

Works with
Apple CarPlay
Works with
Android Auto

PN: SRX-TAC16128



HORIZON 12™

SRX-TAC16128 USER GUIDE

FIND YOUR HORIZON12

You're ready to take on any adventure with your Stinger HORIZON12 radio kit!

Additionally, your new SRX-TAC16128 kit enables you to replace a Toyota Truck factory radio with a show-stopping 12.8-inch multimedia infotainment system while retaining OEM features and maintaining a flush, factory look and feel!

About this document

This document covers features added to the HORIZON12 by your SRX-TAC16128 kit. If you need to reference the HORIZON12 user guide, you can find it by scanning the QR code.

<https://stingerdrive.com/pages/horizon12-product-info>



HORIZON12 USER GUIDE



WELCOME TO YOUR NEW

HORIZON¹²™

SRX-TAC16128 USER GUIDE CONTENTS

Basic Operation	4
Vehicle Info	6
Recolor	7
Gauges	8
Performance	9
Off-Road	10
User Settings	11
Cameras	12
Vehicle Settings	16
Camera Overlay	17
Factory USB Ports	18
PAC Steering Wheel Controls	19
Updating System Firmware	20
Troubleshooting	22



VEHICLE INFO



Press the **HOME BUTTON** > **Vehicle Info** to access the Vehicle Info functions.

1. Tire Pressure

Low pressure warnings can be customized in User Settings.

2. Recolor

Customize on screen vehicle color.

3. Door Closed / Opened

Indicates door, hood, and rear gate statuses.

4. Vehicle Info Footer

Available on all vehicle information displays. Shows GPS Coordinates, Altitude, Tire Angle, and access to Cameras.

5. Check Engine Indicator

This icon will illuminate when the vehicle registers a Diagnostic Trouble Code (DTC) or triggers a check engine condition.

VEHICLE INFO > RECOLOR



Press the **HOME BUTTON > Vehicle Info > Recolor** to access Vehicle recolor

1. Color Name

Displays preloaded color name or custom color number.

2. Color Wheel

Touch and drag to create a custom color.

3. Preloaded Colors

Touch to use one of the preloaded vehicle colors.

4. Finish

After desired color is selected, touch finish to set color as vehicle on screen color.

5. RGB Customization

Colors can be customized by increasing or decreasing the numbers located in each of the red, green, blue color bars.

VEHICLE INFO > GAUGES



Press the **HOME BUTTON > Vehicle Info > Gauges** to access Gauges.

1. Gauges

Tap a gauge to cycle through available gauge types.

2. Gauge Setup Preset

There are two preset gauge setups. Press and hold to save a gauge combination and then tap that setup again to recall that combination.

Change colors in **HOME > Setting > Display > System Highlights**

Change gauge units in User Settings.

Available Gauges:

- Absolute Load
- Barometric Pressure
- Battery Voltage
- Catalyst Temperature
- Current Fuel Efficiency
- Engine Calculated Load
- Engine Coolant Temperature
- Engine Intake Temperature
- Engine Ignition Timing
- Engine MAF Air Flow Rate
- Engine Percent Torque
- Engine Run Time
- Engine Throttle Position
- Fuel/ Air Ratio
- Fuel Level
- Transmission Temp 1 (at oil pan)
- Transmission Temp 2 (at torque conv)

VEHICLE INFO > PERFORMANCE



Press the **HOME BUTTON > Vehicle Info > Performance** to access Performance.

Selecting Performance will display a digital speedometer and tachometer along with performance measurements.

1. Best 0-60 / 1/4 Mile / 60-0

Whenever a new best performance measurement is achieved, the results will be displayed. Use left / right arrows to recall best measurements. Reset best measurements with the reset button.

2. Last 0-60 / 1/4 Mile / 60-0

Use left / right arrows to recall last measurements for each performance metric.

3. Reset

The RESET buttons will reset either Best or Last results.

VEHICLE INFO > OFF-ROAD



Press the **HOME BUTTON > Vehicle Info > Off-Road** to access Settings.

1. Vehicle Pitch

Displays current vehicle front-to-back Pitch angle.

2. Compass

Vehicle current direction.

3. Vehicle Roll

Displays vehicles side-to-side roll angle.

4. Vehicle Info Footer

Available on all vehicle information displays. Shows GPS Coordinates, Altitude, Tire Angle, and access to Cameras.

5. Altitude

Vehicle current altitude.

VEHICLE INFO > USER SETTINGS



Press the **HOME BUTTON** > **Vehicle Info** > **User Settings** to access Settings.

1. Default Off-Road Camera

Set camera that will display as default when camera icon is selected on footer menu.

2. Off-Road Overlay Settings

Turn on and off visible features of the off-road overlay such as Tire angle, heading indicators, or info bar.

3. Scan Tool Warning

Some accessories may interfere with gauge operation. If this occurs, this setting allows you to enable or disable the scan tool warning.

4. Low Tire Pressure

Set the threshold, for the low tire pressure warning shown on the vehicle info display.

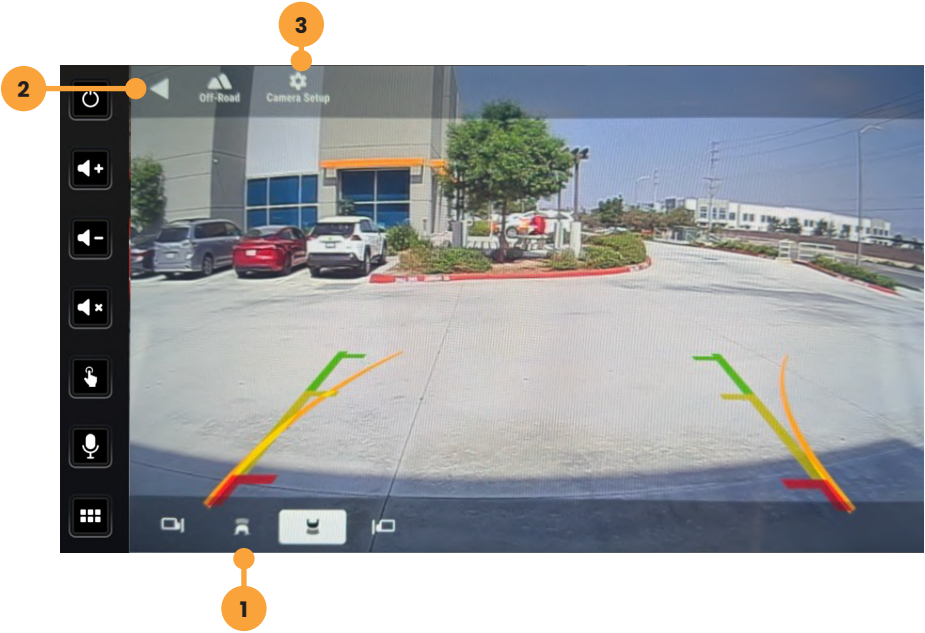
5. Vehicle Recolor

This menu will take you to the vehicle recolor settings discussed on page 7.

6. GPS Precision

Enables normal or advanced GPS locating.

CAMERAS



Press the **HOME BUTTON > Cameras** to select the Cameras app.

1. Camera Selection Bar

If there are optional cameras installed, you may view them at anytime using the camera selection bar at the bottom of the screen.

2. Back Arrow

Touch to exit camera view.

3. Settings

Touch to access Camera Settings.



Press the **HOME BUTTON > Settings > Cameras** to access camera settings.

CAMERAS

Set Up a Custom Camera

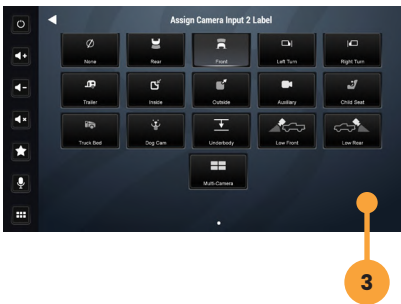
1. Tap Camera Setup



2. Tap a Trigger's Label Button



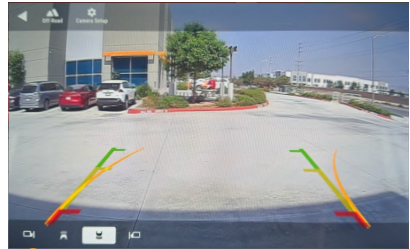
3. Assign a Label



Once you assign a label, that camera's trigger and settings will be active.

4. Camera Selection Bar

Your assigned Camera will now appear on the Camera Selection Bar.



5. Camera Trigger

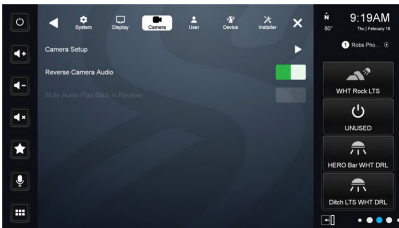
Your selected icon will only appear on the Camera Selection Bar if a label has been assigned and camera trigger is slid to **On** position and displays green.



CAMERAS

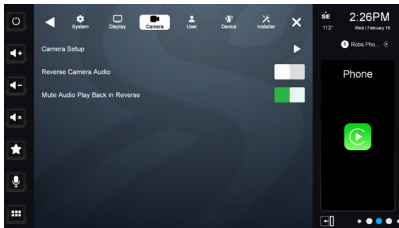
Reverse Camera Audio

When set to ON and a back up camera audio is equipped, back up camera audio will be heard through the vehicle's speakers.



Mute Audio in Reverse

When set to ON the system will mute any audio playback while in reverse.

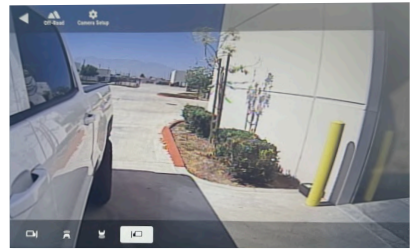


Factory Camera

Your factory rear camera will continue to automatically display when in reverse.

Blind Spot Monitoring Cameras

If equipped with optional aftermarket blind spot monitoring cameras, the Horizon12 will display these cameras when triggering left or right blinkers. These cameras can also be manually triggered through your Camera Selection Bar when assigned.



Park Assist

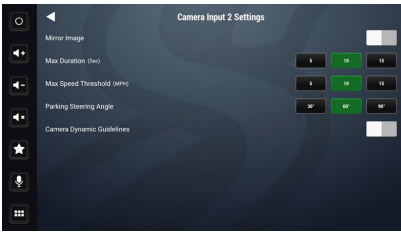
When Park Assist is selected the front camera will display after shifting out of reverse and steering wheel is turned. Front camera will display for the selected number of seconds and under selected speed threshold.



CAMERAS

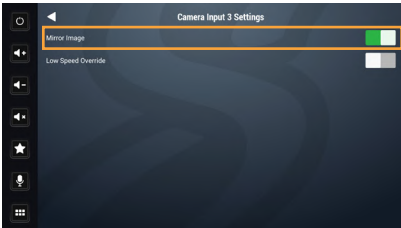
Front Camera Settings

To adjust the front camera settings go to **HOME BUTTON > CAMERAS > CAMERA SETUP > SETTINGS** (of front camera). This will allow you to adjust the time duration or speed threshold that the front camera will stay on for after shifting out of reverse.



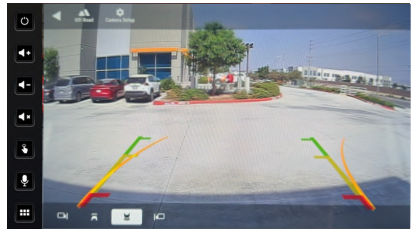
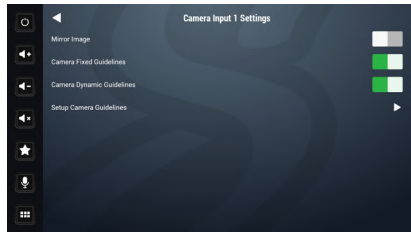
Mirror Image

If camera view is being displayed in reverse tap **HOME BUTTON > CAMERAS > CAMERA SETUP > SETTINGS** on the camera that is reversed. Turn on Mirror Image to correct the camera image.

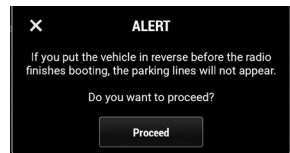


Guidelines

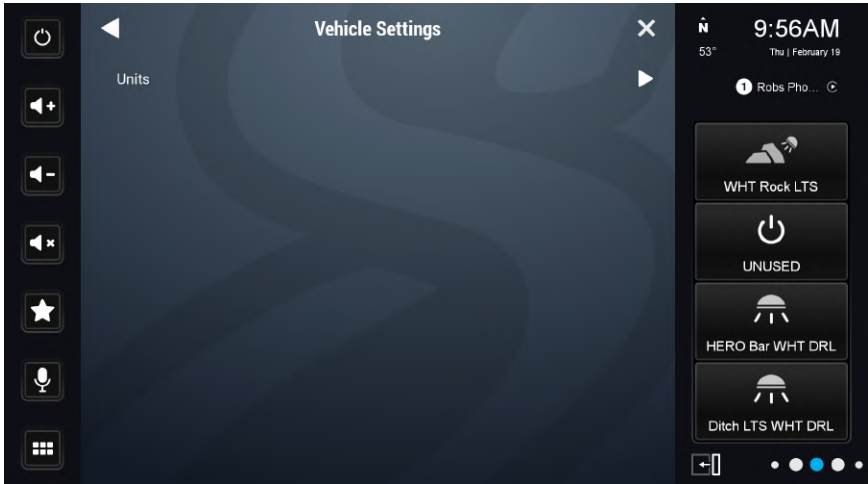
Parking guidelines are available on the SRX-TAC16128 as either fixed, Dynamic, or both. To turn on Guidelines go to **HOME BUTTON > CAMERAS > CAMERA SETUP > SETTINGS** (of the rear or front camera). The rear camera allows the option for both types of guidelines to be displayed. The front camera only allows dynamic guidelines to be displayed.



Note: Dynamic guidelines will not appear if the vehicle is shifted into reverse before the radio has finished booting.



Vehicle Settings



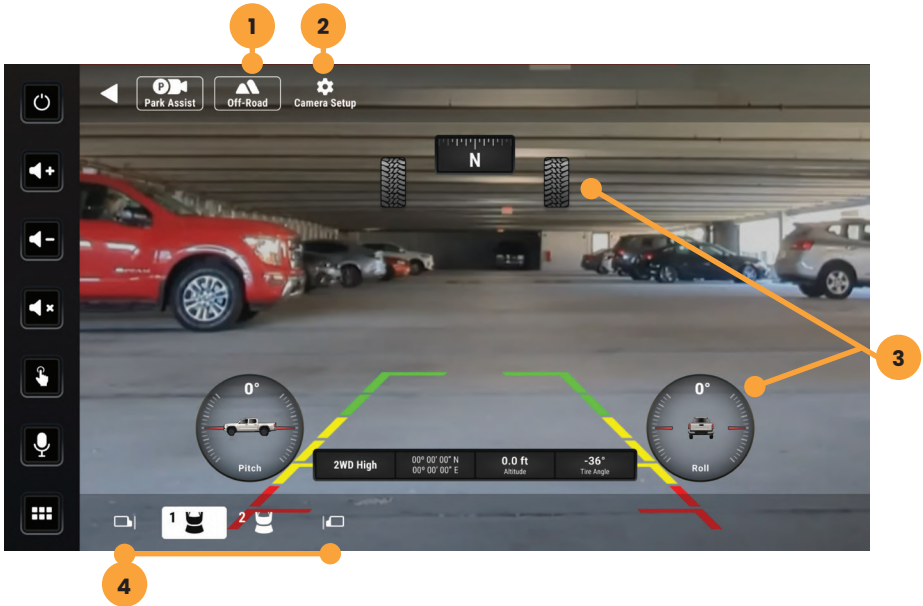
Press the **HOME BUTTON** > **Vehicle Settings** to access Vehicle Settings

The **Vehicle Settings** screen allows you to adjust the measurement units displayed in the instrument cluster. You may select either **U.S. or Metric units**, which changes values such as miles per hour (**MPH**) to kilometers per hour (**KPH**).

Available Settings

Units

CAMERA OVERLAY



Press the **HOME BUTTON > Camera** to access Camera views.

When the camera is first activated, there will be menu bars at the top and bottom of the display. The contents of these bars will vary depending on your installed equipment. These bars will auto-hide after 5 seconds

1. Off-Road Mode

Activating Off-Road Mode will display overlay of heading, tire angle, pitch, roll, and the vehicle information toolbar.

2. Camera Setup

Access your camera setup from this control. Turn triggers on, off, and adjust advanced camera features

3. Off-Road Overlay Elements

When off-road mode is not selected these overlays will no longer appear.

4. Camera Selection

Tap a camera icon to change cameras. Contents of this area will change based on your installed equipment

USB PORTS

The SRX-TAC16128 Integration Kit includes the USBC-TY1 and USBC-TY3 adapters. These adapters allow the vehicle's factory USB port to integrate directly with the SRX-TAC16128 radio, providing a seamless connection while retaining the original USB port location and functionality.

Primary Functions USB-A:

- Apple Carplay
- Android Auto
- USB Drive Media
- Charging
- Firmware Updates

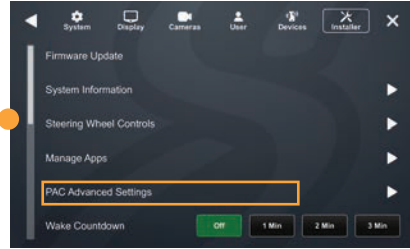


PAC STEERING WHEEL CONTROLS

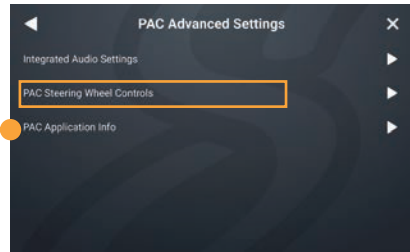
The PAC interface allows retention and customization of the factory steering wheel control buttons.

By default they will be programmed according to the factory functions. You may change the function or add Long Press functionality to any button. For example you can assign Long Press on Voice Control button to activate **OnStar**.

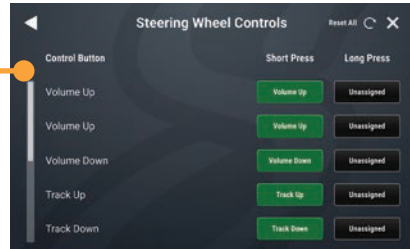
1. Access Installer Settings and select PAC Advanced Settings



2. Select PAC Steering Wheel Controls

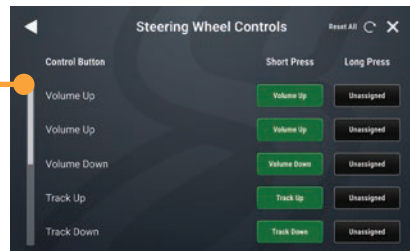


3. To change or add a SWC function, touch the corresponding short or long press assignment



4. A function menu will be displayed with the current function highlighted.

Select any of the functions to assign that function to that button.



UPDATING SYSTEM FIRMWARE

1. Format a USB Drive

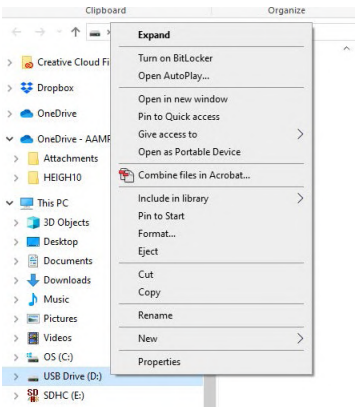
In order to prepare a USB Flash Drive for use with your HORIZON12 system, the USB drive must be formatted to FAT32 / MS-DOS(FAT).

Windows PC

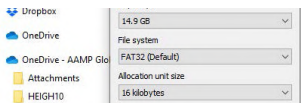
1. Insert a 32GB+ USB Drive
2. Open File Explorer



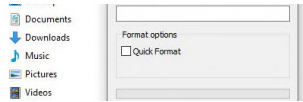
3. Right click on USB Drive and select Format



4. Select FAT 32 (Default) File System



5. Deselect Quick Format



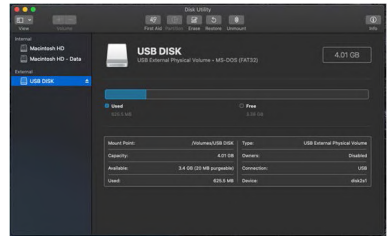
6. Click Start

MAC OSX

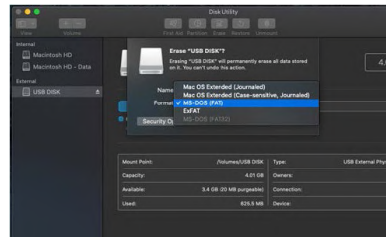
1. Insert a 32GB+ USB Drive
2. Launch the Disk Utility App from the Utilities folder



3. Select the USB drive from the External List and click Erase



4. Select MS-DOS(FAT) from the format drop-down menu and



- click Erase

2. Download Firmware

Download the firmware file from Stingerdrive.com. Transfer the firmware file as-is onto the formatted USB drive.

The file must be in the root directory of the USB drive. Do not unzip the file.

3. Install System Update

Insert the USB drive into any USB port on the radio.

NOTE: When updating the firmware, all settings will be reset to factory defaults.

Station presets, EQ presets, audio/crossover settings, time alignment, camera settings will all be overwritten.

You can export user settings to the same USB drive you prepared earlier from the Installer menu.

Your HORIZON12 will automatically detect the firmware file, either when you plug it into your powered radio or on startup

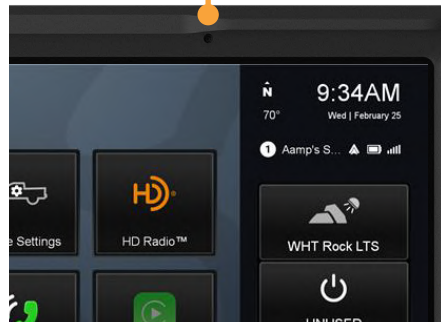
Tap Update Firmware on the popup. The update will take 6 - 8 minutes.

NOTE: Do not attempt to stop an update. DO NOT turn off power. The system will be damaged if power is lost during the update process.

4. System Reset

When the update is complete and display is on the Radio source, Turn the vehicle on and perform a **Master Reset** in the Installer Settings. Once complete, press **Reset** button on the display. Once reboot is complete, turn off vehicle and wait 1 minute. Turn the vehicle back on. Vehicle specific widgets will then appear and update is complete.

Reset Button



TROUBLESHOOTING

General

Black Screen with Audio

Touch the screen anywhere as it may have been turned off.

Ensure the cables on the back of the screen are fully locked into place and also properly connected at the back of the radio module.

Check for damaged/kinked cables.

Bluetooth

Device will not Pair

Ensure Bluetooth is turned ON in your device settings. Delete all unused devices. Delete any "Stinger" device. Restart/Reboot device and try pairing again.

Music Volume is low

- Turn up volume on device
- Turn up volume on head unit.
- Turn up Phone Volume

Phone Volume is low

- Turn up volume on device.
- Turn up volume on head unit.
- Turn up BT Volume Gain
- Turn up Microphone Gain

Cameras

Rear Camera not displaying in reverse

- Make sure rear camera trigger is ON (Page: 12-15)
- If display is showing NO SIGNAL in reverse, ensure camera RCA is plugged into the correct RCA

input (CAMERA IN).

- Confirm camera has power and ground.
- Confirm camera trigger is receiving positive 12V.

Installed Camera not showing Video

- Make sure the correct video format (NTSC, PAL, etc.) is selected.

User Note: Backgrounds

Your HORIZON12 head unit utilizes a Liquid Crystal Display (LCD) panel to display clear, crisp images in a variety of lighting conditions.

Your HORIZON12 unit is optimized to provide the highest quality image in a variety of use cases, but you should be aware that certain contrast ratios and backgrounds can cause temporary image retention.

When customizing your background, avoid images that include high contrast static patterns; these images can cause temporary image retention in LCD panels through repeated use.

Retained images should vanish within 10-40 minutes of normal operation. If you notice image retention from your custom background, we strongly suggest choosing another option, or use one of the included HORIZON12 background options to ensure uninterrupted enjoyment. :)

SiriusXM Satellite Radio

Check Antenna

The radio has detected a fault with the SiriusXM antenna. The antenna cable may be either disconnected or damaged.

- Verify that the antenna cable is connected to the SiriusXM Connect Vehicle Tuner.
- Inspect the antenna cable for damage and kinks.

Replace the antenna if the cable is damaged. SiriusXM products are available at your local car audio retailer or online at www.shop.siriusxm.com.

Check Tuner

The radio is having difficulty communicating with the SiriusXM Connect Vehicle Tuner. The tuner may be disconnected or damaged.

Verify that the SiriusXM Connect Vehicle Tuner cable is securely connected to the radio.

No Signal

The SiriusXM Connect Vehicle Tuner is having difficulty receiving the SiriusXM satellite signal.

- Verify that your vehicle is outdoors with a clear view of the sky.
- Verify that the SiriusXM magnetic mount antenna is mounted on a metal surface on the outside of the vehicle.

- Move the SiriusXM antenna away from any obstructions. Inspect the antenna cable for damage and kinks.
- Consult the SiriusXM Connect Vehicle tuner installation manual for more information on antenna installation.

Replace the antenna if the cable is damaged. SiriusXM products are available at your local car audio retailer or online at www.shop.siriusxm.com.

Channel Locked

The channel that you have requested is Locked by the radio Parental Control feature. See the Parental Control section on Page 18 for more information on the Parental Control feature and how to access locked channels. The Default lock code is **1234**.

Wrong Code

The code you entered is incorrect. The default lock code is **1234**. If you've changed your code and can't remember it, you will have to perform a master reset of your head unit to restore the old code.

Subscription Updated

The radio has detected a change in your SiriusXM subscription status.

Press anywhere on the screen to clear the message.

Channel Unavailable

The channel that you have requested is not a valid SiriusXM channel or the channel that you were listening to is no longer available. You may also see this message briefly when first connecting a new SiriusXM Connect Vehicle tuner.

Visit www.siriusxm.com for more information about the SiriusXM channel lineup.

Memory End

This message will display when the beginning of stored audio has been reached. You cannot rewind any further.

IR Buffer Memory Full

The stored audio memory has become full while audio was paused.

Channel Unsubscribed

The channel that you have requested is not included in your SiriusXM subscription package or the channel that you were listening to is no longer included in your SiriusXM subscription package.

In the U.S.A., visit www.siriusxm.com or call 1-866-635-2349 if you have questions about your subscription. In Canada, visit www.siriusxm.ca or call 1-877-438-9677 if you have questions about your subscription.

Apple CarPlay

Restart your Phone

A common first step to take when you're having connection issues is to restart your device.

1. Turn your phone off.
2. Wait 30 seconds.
3. Turn your phone back on

Make sure your operating system is up to date

Apple often releases updates to your phone's operating system, known as iOS®, to keep it secure and working at its best. These software updates are important. Not updating your iPhone can lead to software issues and glitches, like CarPlay not working.

For step by step instructions, visit <https://support.apple.com/en-us/118575>

Make sure CarPlay is turned on

If your iPhone isn't connecting to Apple CarPlay, the feature may not be enabled on your device or you may have turned it off and need to turn it back on. Here's how:

Go to Settings > General > CarPlay > My Cars, then select your car to reconnect it to the app. Make sure to turn on the Allow CarPlay When Locked option, too, so that CarPlay works when your phone is locked.

If your car is already connected,

tap your car, then tap Forget This Car. Then connect it again.

If you've turned off CarPlay in Screen Time, go to Settings > Screen Time > Content & Privacy Restrictions. If you've turned on Content & Privacy Restrictions, tap Allowed Apps and confirm that CarPlay is enabled. (Tap the button until it's green.)

Confirm Siri is turned on

CarPlay won't work unless Siri® is turned on. To turn it on, go to Settings > Siri & Search on your iPhone, then confirm that Listen for "Hey Siri" is on.

Make sure to include the Allow Siri When Locked option, too, so that CarPlay works when your iPhone is locked.

Make sure Bluetooth is connected

If you're using a wireless CarPlay connection, go to Settings > Bluetooth to confirm that Bluetooth® is turned on. Then go to Settings > Wi-Fi to check that Wi-Fi is also turned on. Finally, go to Settings > General > CarPlay and check that Auto-Join is turned on.

Check your USB cable

Make sure the wire isn't frayed or broken. Try using it with another device—if it doesn't work, you probably have a faulty USB cable and need to replace it.

Android Auto

Restart your Phone

A common first step to take when you're having connection issues is to restart your device.

1. Turn your phone off.
2. Wait 30 seconds.
3. Turn your phone back on

Make sure your operating system is up to date

You can find your device's Android version number, security update level, and Google Play system level in your Settings app. You'll get notifications when updates are available for you. You can also check for updates there as well

For step by step instructions, visit <https://support.google.com/android/answer/7680439>

Make sure Bluetooth is connected

If you're using a wireless Android Auto connection, go to Settings > Bluetooth to confirm that Bluetooth® is turned on.

Check your USB cable

Not all USB cables will work with all cars. For the best quality and reliability when you connect to Android Auto try a high-quality USB cable.

HORIZON¹²™

™

The HORIZON12 infotainment radio boasts, a roomy 12.8-inch touchscreen, wireless smartphone connection, and IP65 weather-resistance for any adventure.

**Enhance your experience
with our compatible products**

AudioControl®
Making Good Sound Great™

DM Smart DSP App Integration
On-screen control of AudioControl's
DM series processors and amplifiers



Factory Vehicle Integration
Retain factory features and add
even more upgraded features

ENLIGHT10

RGB Light Control
On-screen control of ENLIGHT10
RGB dynamic LED lighting